

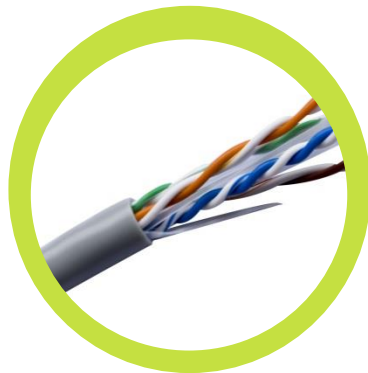
Meet Our Feature Products

HDMI CABLE, NETWORK CABLE, SIAMESE CABLE, COAXIAL CABLE



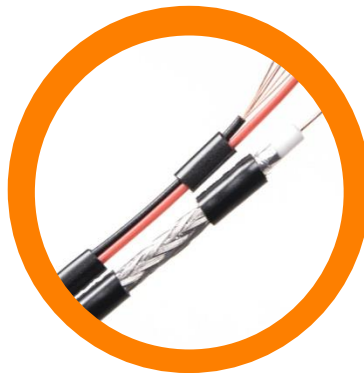
HDMI CABLE

Connector cable, connect with TV, computer, laptop etc.



NETWORK CABLE

Used for computer connection, or CCTV camera system



SIAMESE CABLE

Siamese cable, which is coaxial cable with power cable, used for CCTV camera



COAXIAL CABLE

Coaxial cable, common model like RG59, RG6, used for TV, TV box, antenna etc.



HDMI 1.4V

HDMI 1.4V, 14+1 Technology, 1080P(2K)

Conductor

HDMI 1.4V usually comes with CCS conductor

Technology

HDMI 2.0V also can be called HDMI 14+1

Support 1080P

It can support 1080P(2K)



HDMI 2.0V

HDMI 2.0V, 19+1 Technology, 4K

Conductor

HDMI 2.0V usually comes with bare copper conductor

Technology

HDMI 2.0V also can be called HDMI 19+1

Support 4K

It can support 1080P and 4K more stable

HDMI'S JACKET

Braiding Jacket VS PVC Jacket



HDMI BRAIDING JACKET

Inner construction no difference, just add one more braiding sheath than the PVC one.



HDMI PVC JACKET

PVC jacket is the most common choice in the current market, it's a bit cheaper than braiding jacket one.

HDMI'S RING CORE

Ring Core, Magnetic Core, Filter



FUNCTION

The magnetic ring cores (has different name) can be added as customer's choice.

With magnetic: Real core: Anti-electromagnetic interference

Without magnetic: Decoration core: for decoration use

For CCS, usually with decoration core.

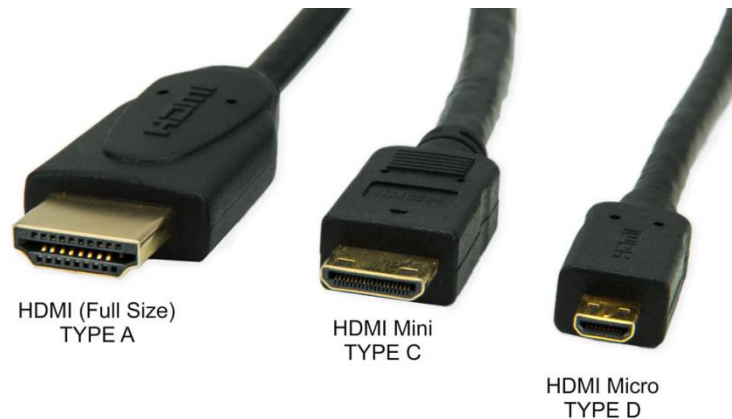
For Bare Copper, usually with real core.

“Different Braiding Model ”



“We own our HDMI connector models, recommend clients to choose our massive different models.”

Additional Point:





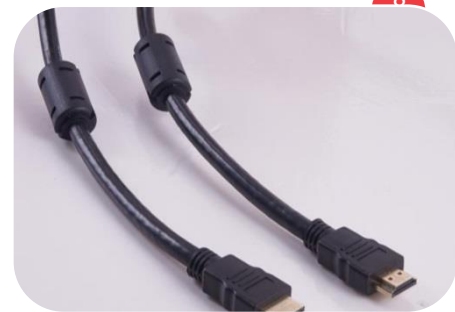
006



007



008



008



008



010



011



016



D001 A-B



D001A



D002



D003



D004



D005



D006



D007



D008



D009



D010



D012



D013



D014



D015



D016



D022



D023



D024



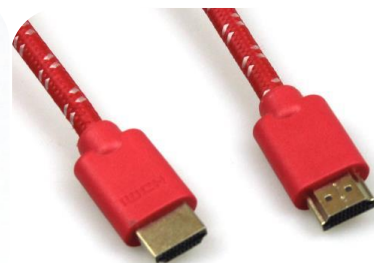
D011



D021



D027BU



D027RD



D028



F009



F009



F016



F016



F016



F016



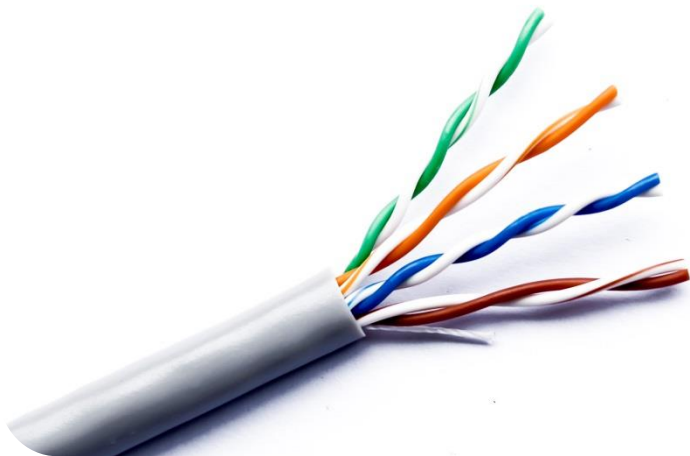
F016



F016

NETWORK CABLE

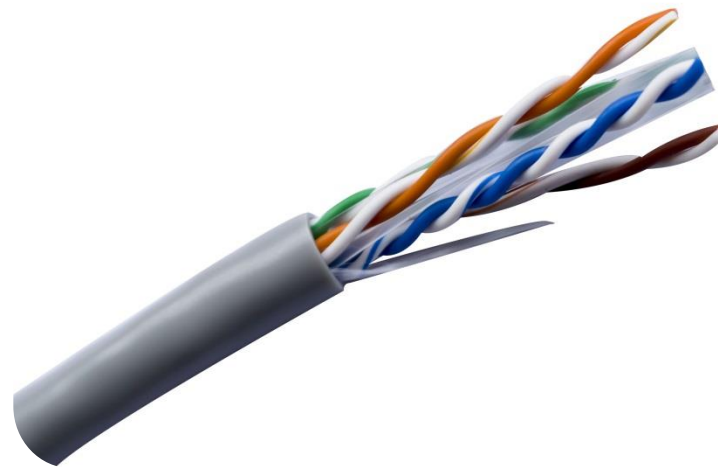
CAT5E vs CAT6



U/UTP Cat5e (CCA or BC conductor)

U/UTP Cat5e cable, 4 twisted pair Solid, 24AWG standard (0.5mm)

150Mhz



U/UTP Cat6 (CCA or BC conductor)

U/UTP Cat6 cable, 4 twisted pair Solid, cross, 23AWG standard (0.57mm)

250Mhz

NOTICE

Additional Points

01

CCA conductor

Cat5e make full 0.5mm CCA, Cat6 make full 0.57mm CCA. NO tolerance. Support 100-120m, 720P image

02

BC conductor

Cat6 make full 0.5mm BC (NO tolerance) can support 1080P=2MP image.

03

Jacket

Normal BC conductor cable matches with 70° PVC jacket.

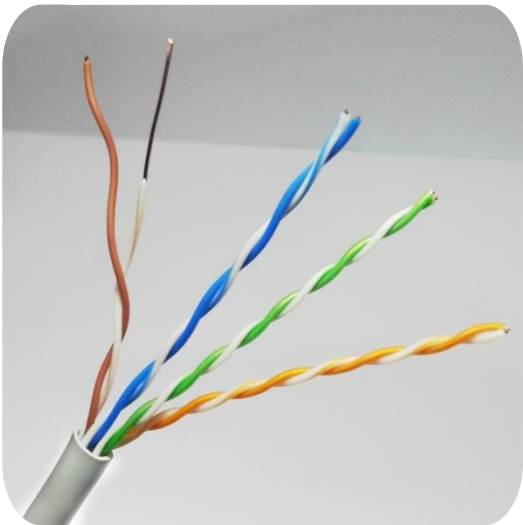
AWG

American Wire Gauge

AWG	Diam mm	Sect. mm ²	Resist. ohm/m	AWG	Diam mm	Sect. mm ²	Resist. ohm/m
0000	11.7	107,0	0.000161	19	0,91	0,6530	0.0264
000	10.4	85.0	0.000203	20	0,81	0,5190	0.0333
00	9.26	67.4	0.000256	21	0,72	0,4120	0.0420
0	8.25	53.5	0.000323	22	0,64	0,3250	0.0530
1	7,35	42,4	0.000407	23	0,57	0,2590	0.0668
2	6,54	33,6	0.000513	24	0,51	0,2050	0.0842
3	5,83	26,7	0.000647	25	0,45	0,1630	0.106
4	5,19	21,2	0.000815	26	0,40	0,1280	0.134
5	4,62	16,8	0.00103	27	0,36	0,1020	0.169
6	4,11	13,3	0.00130	28	0,32	0,0804	0.213
7	3,67	10,6	0.00163	29	0,29	0,0646	0.268
8	3,26	8,35	0.00206	30	0,25	0,0503	0.339
9	2,91	6,62	0.00260	31	0,23	0,0415	0.427
10	2,59	5,27	0.00328	32	0,20	0,0314	0.538
11	2,30	4,15	0.00413	33	0,18	0,0254	0.679
12	2,05	3,31	0.00521	34	0,16	0,0201	0.856
13	1,83	2,63	0.00657	35	0,14	0,0154	1.08
14	1,63	2,08	0.00829	36	0,13	0,0133	1.36
15	1,45	1,65	0.0104	37	0,11	0,0095	1.72
16	1,29	1,31	0.0132	38	0,10	0,0078	2.16
17	1,15	1,04	0.0166	39	0,09	0,0064	2.73
18	1,02	0,82	0.0210	40	0,08	0,0050	3.44

CABLE INNER CONSTRUCTION

Solid vs Stranded



Solid Cat5e 24AWG

Detail: 4 x 2 x 0.5mm

Directly meet AWG sheet: 24AWG – Diameter: 0.51mm



Stranded Cat5e 24AWG

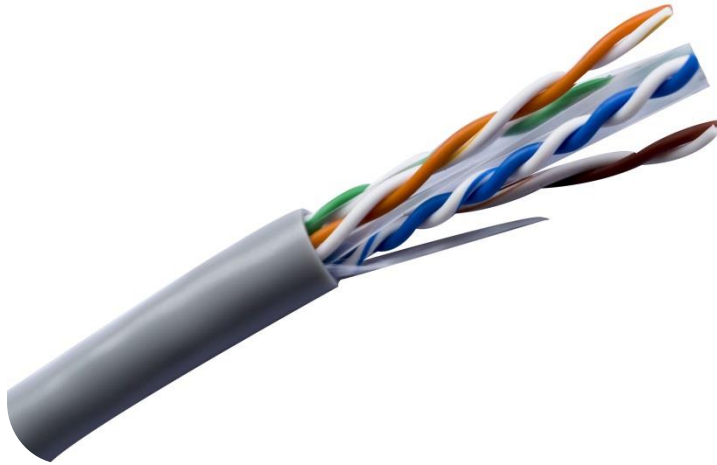
Detail: 4 x 2 x 7 x 0.2mm

Formula: $\pi r^2 \cdot n = 3.1416 \times 0.1 \times 0.1 \times 7 \approx 0.21$

Directly meet AWG sheet: 24AWG – Section: 0.2050mm²

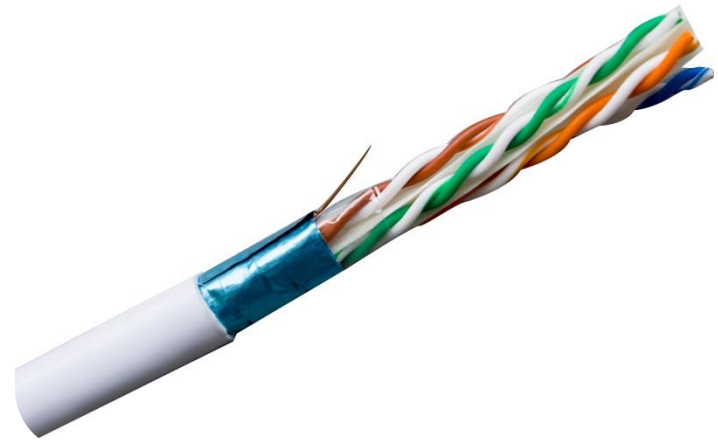
NETWORK CABLE

U/UTP vs F/UTP



U/UTP Cat6 (CCA or BC conductor)

U means un-shield, total cable no shield.

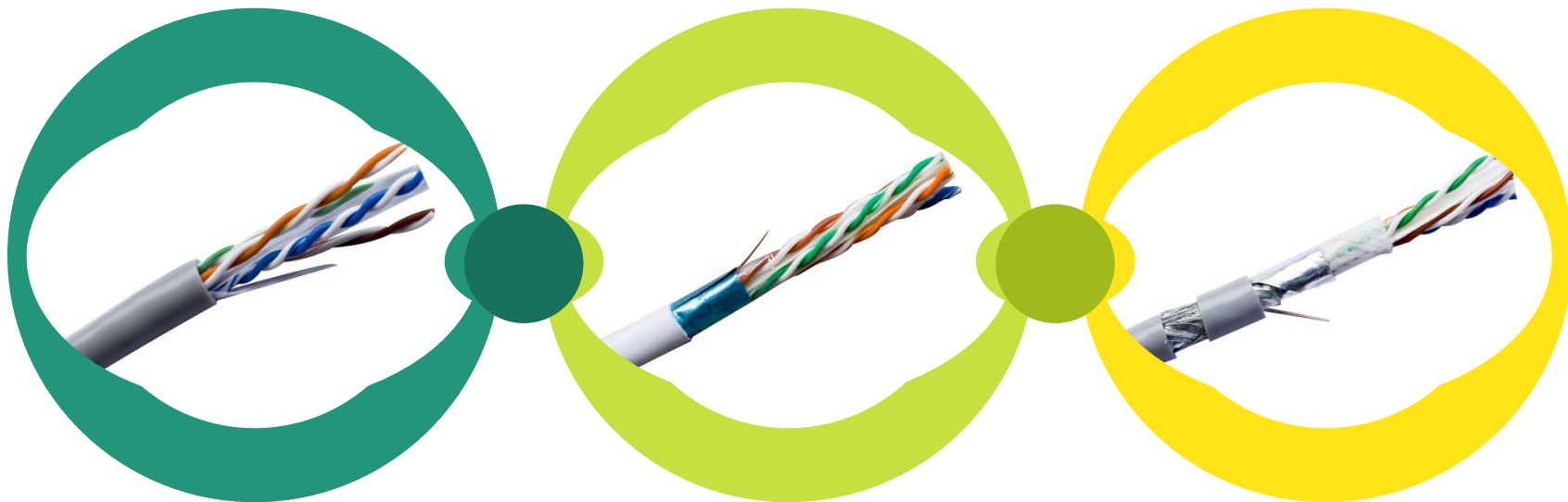


F/UTP Cat6 (CCA or BC conductor)

F means foil shield. Before “/” describes if there’s overall shield (al-foil) for the cable. After “/” means if each pair has separately al-foil shield.

NETWORK CABLE

U/UTP Cat6 vs F/UTP Cat6 vs SF/UTP Cat6



U/UTP Cat6

Un-shield

F/UTP Cat6

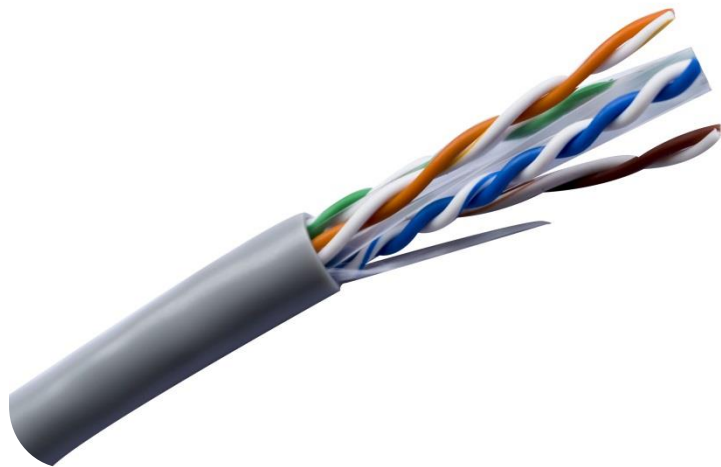
Overall with al-foil shield, each pair no shielding

SF/UTP Cat6

Overall with al-foil shield and braiding shield, so it's double shield cable.

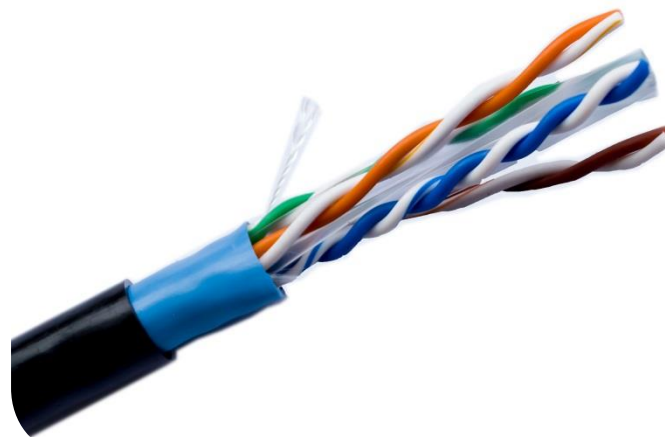
NETWORK CABLE

INDOOR vs OUTDOOR



Indoor U/UTP Cat6 (CCA or BC conductor)

Indoor cable has 1 PVC jacket sheath.

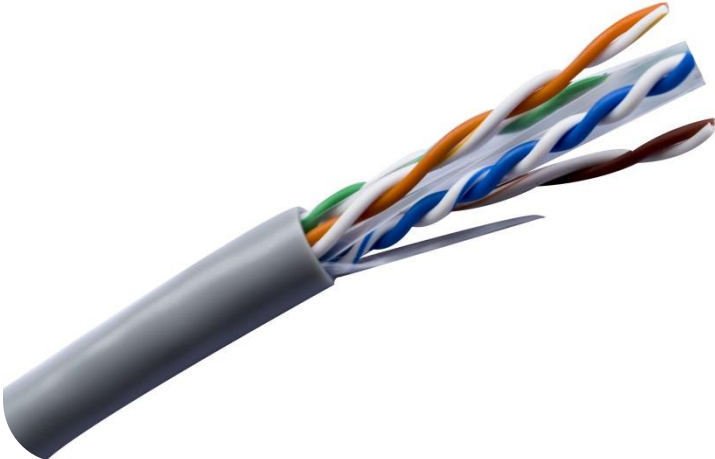


Outdoor U/UTP Cat6 (CCA or BC conductor)

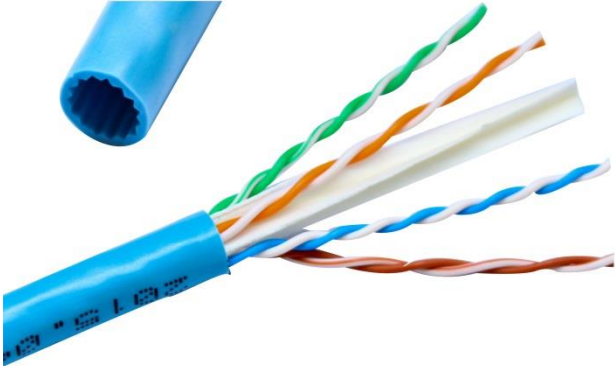
Outdoor cable usually has 2 jacket sheath, 1 PVC jacket as indoor cable, plus 1 PE jacket. It can protect cable from using outdoor. Anti-water etc.

NETWORK CABLE

Cat6 vs Cat6A



Indoor U/UTP Cat6 (CCA or BC conductor)
Normal Cat6 cable, normal PVC. Cross is a bit transparent.

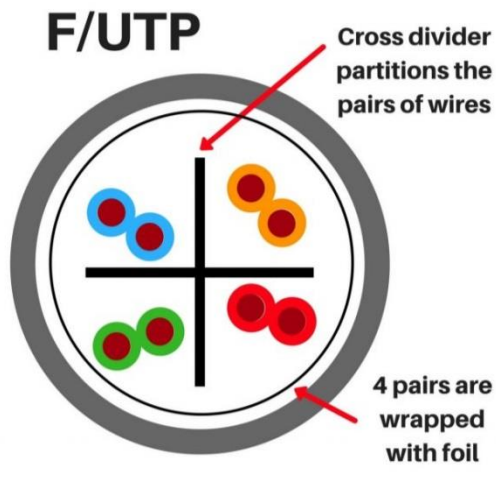


Outdoor U/UTP Cat6A (Also called UTP Cat6A)
Cat6A cable has teeth shape inside of the PVC jacket. It's cross it's white color, not transparent. Way more expensive than Cat6.

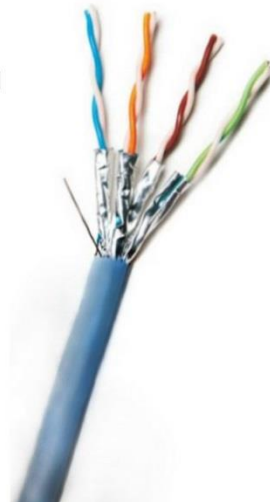
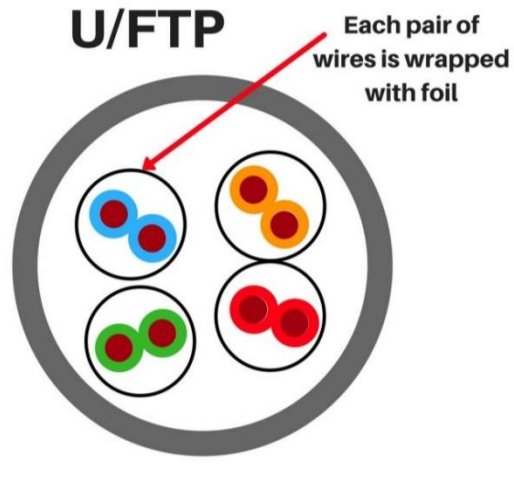
NETWORK CABLE

F/UTP vs U/FTP

F/UTP



U/FTP



F/UTP Cat6

F/UTP stands for foiled, unshielded twisted pair. Inside the CAT6A F/UTP cable, each pair of cables is twisted and separated by a cross divider. All 4 unshielded pairs are wrapped with a metal foil.

U/FTP Cat6A (also called FTP Cat6A)

U/FTP stands for unshielded foiled twisted pair. Inside the CAT6A U/FTP cable, each pair of cables is twisted and wrapped with metal foil.

CONDUCTOR DETAILS

CCA vs BC

01

CCA Conductivity

Conductivity 37%

02

CCA Resistance

Each conductor is 24Ω/100m

03

CCA Copper Content

Copper is 5%, Al is 93%, Mg is 2%

04

BC Conductivity

Conductivity 99.9%

05

BC Resistance

Each conductor is 6-15Ω/100m

06

BC Copper Content

Copper is 99.9%

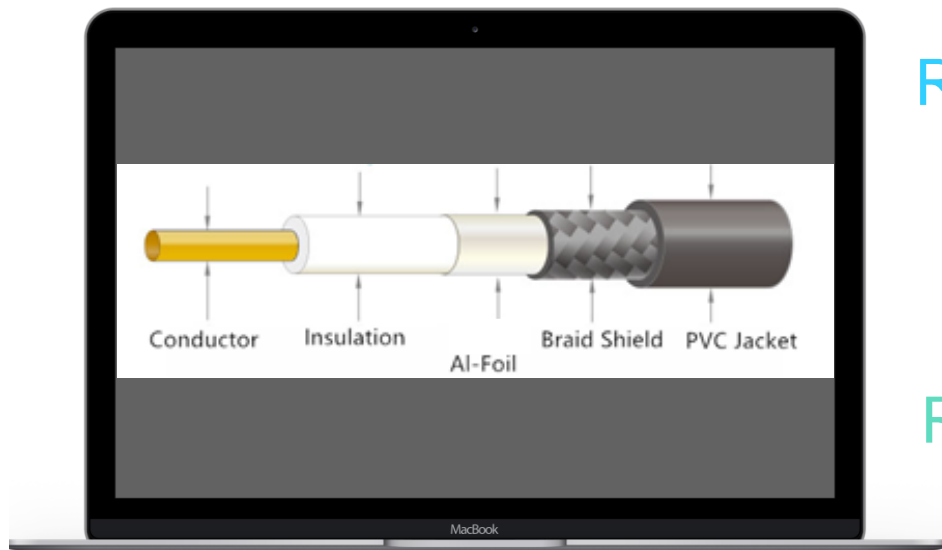
COAXIAL CBALE

RG59, RG6



COAXIAL CABLE

RG59 vs RG6



RG59

Conductor: 0.65mm CCS/CCA/BC

Insulation: 4.8mm FPE/PE

1st Shield: Al-Foil/Bonded Al-Foil

2nd Shield: 64x0.12mm ALMG/CCA/BC
Braiding Shield

OD: 5.7mm PVC

RG6

Conductor: 1.02mm CCS/CCA/BC

Insulation: 3.7mm FPE/PE

1st Shield: Al-Foil/Bonded Al-Foil

2nd Shield: 64x0.12mm ALMG/CCA/BC
Braiding Shield

OD: 6.8mm PVC

NOTICE

Additional Points

01

Support 4MP (COAXIAL SIGNAL)

RG6: 0.9mm BC, 96 Braiding

02

Support 4MP, 8MP (NETWORK SIGNAL)

UTP Cat5e: 0.5mm BC

UTP Cat6: 0.5mm BC

03

Support 4MP, 8MP (STABLE)

UTP Cat5e: 0.5mm BC (NO tolerance)

UTP Cat6: 0.57mm BC (NO tolerance)

SIAMESE CABLE

Details

Center Conductor

Size

Dia.(mm)

Insulation

Dia.(mm)

Braid Shield

Coverage(%)

Jacket

Dia.(mm)

CCA

18AWG

0.81

FPE

3.67

Al-Mg

≥95

PVC

6.00

POWER CABLE

Conductor

Size

Insulation

Dia.(mm)

Jacket

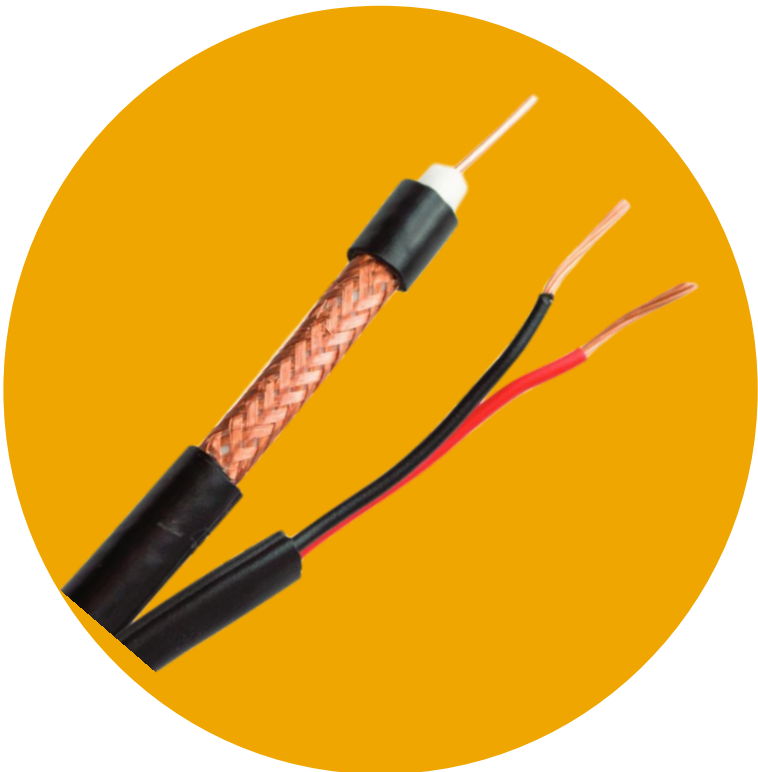
18AWG Stranded CCA

2X7/0.38mm

Black & Red PVC

2x1.70

Black PVC





**Flexibility-high
flexibility
protection**





**Powerful
Anti-Disturbance
Shielding**

NOTICE

Additional Point

Highly Recommend Siamese cable

Support 1080p=2MP, 600m