



BBT ANTENNAS INC

Model NO.: BBT-0638WL0609D090-N4

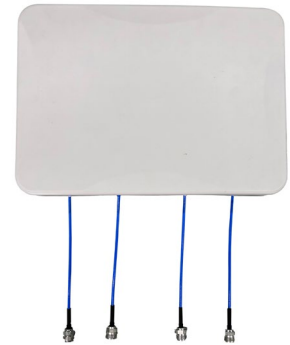
Type :4T4R MIMO Wall mount Antenna

Application:

- ★Support 4G、5G communication system
- ★For indoor DAS coverage system

Features:

- ★Broadband,Low PIM ,Low VSWR, good performance
- ★Attractive appearance
- ★Wall mounting , install and use conveniently

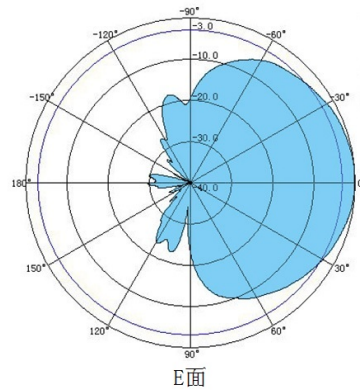
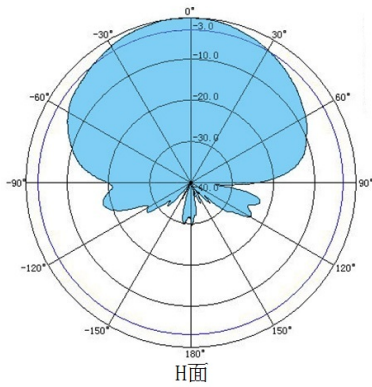


Specifications:

Electrical			
Model Number	BBT-0638WL0609D090-N4		
Frequency Range	698-960MHz	1700-2700MHz	3300-3800MHz
Polarization Type	$\pm 45^\circ$	$\pm 45^\circ$	$\pm 45^\circ$
Gain	6dBi	9dBi	8dBi
3dB Beam-Width. H-Plan	90°	75°	60°
3dB Beam-Width. E-Plan	80°	55°	40°
VSWR	≤ 2.0	≤ 2.0	≤ 2.0
Front to back Ratio	≥ 16 dB	≥ 20 dB	≥ 16 dB
Port to Port Isolation	≥ 20 dB	≥ 25 dB	≥ 25 dB
Input Impedance	50 Ω		
Max Input Power.	50W		
Mechanical			
Connector Type	4*N- Female		
Dimensions H*W*D (mm)	390*280*70(mm)		
Cable	SFF-50-3		
Cable length	25cm		
Radome Material	PC+ABS		

Radome color	White
Operating Temperature Rang	-40°C/+60°C
Support Pole Diameter	φ30-φ60(mm)

Radiation Pattern:



BBT ANTENNAS INC

Tel: (+86) 0757-66898899

<http://www.bbtantennas.com>