



BBT ANTENNAS INC

Model NO: BBT-0660WL0609R090-M4

Type :4T4R MIMO Wall mount Antenna

Application:

★Support 4G、5G 、6G communication system

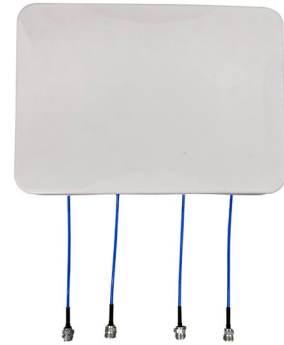
★For indoor DAS coverage system

Features:

★Broadband,Low PIM ,Low VSWR, good performance

★Attractive appearance

★Wall mounting , install and use conveniently

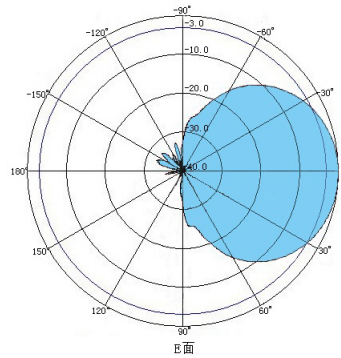
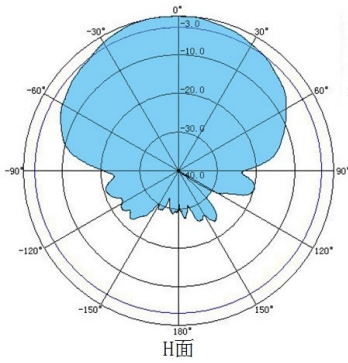


Specifications:

| Electrical | | | | |
|-------------------------------------|-----------------------|--------------------|--------------------|--------------------|
| Model Number | BBT-0660WL0609R090-M4 | | | |
| Frequency Range | 698-960MHz | 1710-2700MHz | 3300-4200MHz | 4200-6000MHz |
| Polarization Type | $\pm 90^\circ$ | | | |
| Gain | 6dBi | 9dBi | 8dBi | 7dBi |
| 3dB Beam-Width. H-Plan | 90° | 75° | 60° | 50° |
| 3dB Beam-Width. E-Plan | 80° | 55° | 40° | 30° |
| VSWR | ≤ 2.0 | ≤ 2.0 | ≤ 2.0 | ≤ 2.0 |
| Intermodulation IM3(2*43dBmcarrier) | $\leq -150\text{dBc}$ | | | |
| Front to Back Ratio(dB) | $\geq 16\text{dB}$ | $\geq 20\text{dB}$ | $\geq 16\text{dB}$ | $\geq 15\text{dB}$ |
| Isolation | $\geq 20\text{dB}$ | $\geq 25\text{dB}$ | $\geq 25\text{dB}$ | $\geq 30\text{dB}$ |
| Input Impedance | 50Ω | | | |
| Max Input Power. | 50W | | | |
| Mechanical | | | | |
| Connector Type | 4×4.3-10-Female | | | |
| Cable | SFF50-3 | | | |
| Cable length | 25cm | | | |
| Dimensions H*W*D (mm) | 390*280*70(mm) | | | |
| Radome Material | PC+ ABS | | | |

| | |
|----------------------------|-------------|
| Radome color | White |
| Operating Temperature Rang | -40°C/+60°C |

Radiation Pattern:



BBT ANTENNAS INC

Tel: (+86) 0757-66898899 <http://www.bbtantennas.com>