

KINGHOME

KINGHOME

Foshan Kinghome Environmental Technology Co.,Ltd
8th Floor, Building 5, Tianhua Commercial Building, Pingsan
Road, Guicheng Street, Nanhai District, Foshan City
TEL/FAX: 86-757-86292092

KINGHOME

Kinghome Environmental Technology Co.,Ltd

Optimize ray receiving ability, and achieve
the mirroring effect on stone surface as
attractive as magic polar light



Company Profile

KingHome Environmental technology Co., Ltd. is a leading supplier focusing on the treatment for hard floor with comprehensive solutions and products. Digging into the stone care industry for more than 20 years, we have become expert in the fields of floor grinding, polishing, cleaning and care. With a series of self-created stone care products and technical solutions, we are promoting the significant development of stone maintenance and cleaning industry.

KingHome has built a unique development mode of "Product + Service + Training". With self-owned factory developing and producing stone care products, KingHome is always at the forefront of the industry by strictly controlling the production process and quality. A range of stone care products have been created, such as Crystalshield, Revontulet and Ecoclean.

Crystalshield adopts innovative physical crystallization techniques, which can not only highlight the natural texture and brilliant colors of stone, but also generate excellent hardness, wear resistance and water resistance.

Revontulet originates from new crystal plating technology, forming the protective layer on the stone surface with functions of smoothing, repairing and protecting. It helps to present the full and transparent texture of stone.

Ecoclean Cleaning Series is created with eco-friendly formula, making cleaning work simple, convenient and effective, especially suitable for using in public places.

While developing and promoting high-quality products, we are also the agency of many European and American top brands, such as Rubbermaid, Klindex, Federchemicals, 3M, Cambro, and Tennant, providing diverse choices and services for our partners.

Furthermore, KingHome also provides customers with professional consulting services, customizing comprehensive cleaning and care solutions, and providing on-site guidance and training for customers according to their actual conditions. We are committed to providing continuous growth for the industry.

Our Honors

- 2022 Foshan Sanitation Industry Association Exemplary individual Industry
- 2021 Alibaba Verified Supplier
- 2020 Member Units of Guangdong Stone Industry Association
- 2019 China Clean Expo Industry - The 10th Golden Diamond Award and Outstanding Contribution Award of Clean Industry.
- 2018 The ninth CCE gold diamond award for innovation.
- 2016 Five-star diamond supplier for stone care
- 2015 The sixth China Clean gold diamond award for innovation , outstanding brand and user selection.
- 2014 The fifth China Clean gold diamond award for innovation cleaner.
- 2012 (South China)one of the most popular supplier in cleaning industry
- 2011 China clean union director unit
- 2010 National chamber of commerce for stone industry,China stone media union jointly issued "stone product quality gold medal enterprise in China"and "stone care the most competitive products in China"
- 2010 Join the cleaning industry association(ISSA),become ISSA member
- 2009 China clean expo the first boutique prize--Gold award, The green product award



Representatives of our Clients

Jumeirah

PAVILION

EMAAR SQUARE MALL

MARRIOTT

THE DUBAI MALL
BE AT THE HEART OF IT ALL

Pacific Century Premium Developments
盈科大湾地产发展

II | V | M

ATLANTIS DUBAI

Siloam Hospitals

MENARA ASTRA
member of ASTRA

Sheraton

Tatler

PCP PACIFIC CENTURY PLACE

unim 寰宇城

vanke 万科
筑美生命 共筑城市

LIPPOMALL KEMANG

SUNAC 融创
至臻 · 致远

the mixc 万象城

SUNING
planer 苏宁广场

SHANGRI-LA 香格里拉

GLOBAL STARBUCK

WANDA GROUP 万达集团

SINAR MAS CENTER 上海白玉兰广场

LMIR TRUST

CRYSTAL SHIELD

Innovative Physical Crystallization System

Clean&dustproof | sparkling&crystal-clear | lasting gloss | bright&non-slip



Core technology ensures the improved product

Crystal luster highlights your house

Rich and fine crystal particles arrange closely, make the combination of crystal film more fastness, light transmittance is higher, it highlights the natural texture and gorgeous colour of stone.

Incomparable high strength and wear resistance

The hardness of common wax agent is low, generally not more than 3.6; And the hardness of general crystallizing material is not more than 4, so it can't resist the damage from the sand. Crystal shield contains hard materials, the formation of protective film is hard, resistant to trample, washable, it can give stone lasting protection.



Resistance to slip and stains

The surface of Crystal Shield is hydrophobic, not only resist to ink, juice, sewage, but also against the oxidation or decomposition by general acid or alkali detergents. Sucker function will show when it contacts water or sole. The surface friction coefficient is within 0.5-0.7, more than the national standard GB19079.1-2003 (enacted on May 1st 2004) which requires the static friction of floor is no less than 0.5, is wholly slip resistant.

Blue shield

Blue Shield for Stone and Polished tile:with the action of thermal force of the crystallization machine and 3M white pad, Blue shield can uniformly penetrate into the gaps of stone and polished tile molecules and solidify into a high strength transparent protective layer,just like form a crystal shield on the floor surface.

Resistance to slip, acid and alkali, dust and washing, scratches and stain. With the advantage of excellent self-cleaning performance.

Range of application:

All kinds of polished tiles,granite,quartz stones,microcrystal stones and ceramic tiles,marble,artificial marble.



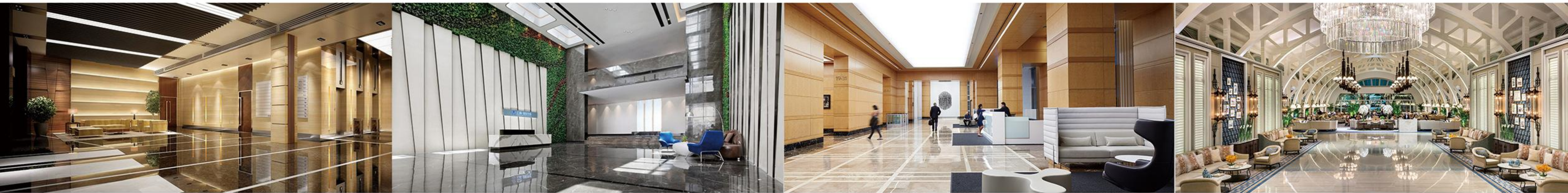
Green shield

Green Shield for marble: with the action of thermal force of the crystallization machine and steel wool or 3M white pad,Green shield can uniformly penetrate into the gaps of stone and polished tile molecules and solidify into a high strength transparent protective layer,just like form a crystal shield on the floor surface.

Resistance to slip, acid and alkali, dust and washing, scratches and stain.With the advantage of excellent self-cleaning performance.

Range of application:

Applicable for marbles, artificial marble, terrazzo, concrete, artificial stone.



Method of application:

1. Clean and dry the floor up naturally.
2. Spray Blue Shield on the floor(5-10ml/m²),cooperate with 3M white pad and crystallization machine.
3. Rub the floor dry evenly, it takes about 1-2 minutes. Which causes to produce strong crystal protective film on the surface at once.
4. Clean up the floor if have dust, repeat step 3 with Blue Shield, which can make the layer of Blue Shield tenser, stronger and brighter.
5. If the first time to apply Blue Shield, it needs to do 2-3 processes normally.As result,the floor looks brighter.
6. Clean the floor with dust mop and the operation is complete. Maintenance in the future, just apply 1 process of Blue Shield.

Crystal Shield keeps new and shows its extraordinary irresistible charm by the public

Method of application:

1. Clean and dry the floor up naturally.
2. Spray Green Shield on the floor(5-10ml/m²), cooperate with steel wool or 3M white pad and crystallization machine.
3. Rub the floor dry evenly, it takes about 1-2 minutes. Which causes to produce strong crystal protective film on the surface at once.
4. Clean up the floor if have dust, repeat step 3 with Green Shield, which can make the layer of Green Shield tenser, stronger and brighter.
5. If the first time to apply Green Shield, it needs to do 2-3 processes normally. As result, the floor looks brighter.
6. Clean the floor with dust mop and the operation is complete. Maintenance in the future, just apply 1-2 process of Green Shield.

Our unmitting endeavors ,all prove the magnificence we bring you

Golden shield

Stone care Crystalshield:the new product is specially designed for stone maintenance, with the action of the thermal force of the crystallization machine and 3M white pad,uniformly penetrate into the stone surface structure, lock the unstable molecules of stone,make the layer more compact and firm,solidify into a moist and crystal protective shield. It enjoys powerful properties of efflorescence resistance,anti-dust,acid and corrosion resistance,washable,anti-scratch and excellent self-cleaning and anti-fouling.

Range of application:

Applicable for marble, granite, artificial stone, ceramic tile, inorganic



Method of application1: Daily maintenance

1. Clean up and dry up the floor naturally.
2. Spray golden shield on the floor(5-10ml/m²),use 3M white pad with crystallization machine,rub the floor evenly until dry up, which causes to produce a brightness and wearable crystal protective layer.

Method of application2:

The floor after renovation or wear serious :

1. Make a crystallizing layer with crystalshield or revontulet according to the stone type.
2. For daily maintenance, cover a layer of golden shield.

Crystal Shield keeps new and shows its extraordinary irresistible charm by the public

Comparison between Crystal Shield and other maintenance agents



Compared Items	Melt Wax (Resin)	Crystallizing Agent (Power,Slurry,Liquid)	Crystal Shield
Scope of Application	Granite,marble,ceramic tiles (excl.polished tiles),timber	Granite,marble,sand stone (cautious for black stone)	Granite,marble,artificial stone, sand stone,microcrystal stone, ceramic tiles,polished tiles and glass etc.
Film Formation	Form a layer of low-density and rigidity plastic film	Surface grinding polishing	High hardness nanometer silicon particles constitute the compact protective shield
Abrasion Resistance	Low	Middle	High
Skid Prevention	Not ok	Good	Better
Dark Stones	Strong alkali de-waxing agent will fade the stone	Acidic formula will bleach the stone,then(green,black or grey) pigments must be added	Not change existing staus of base material,ensure the natural luster of the stone
Operability	Frequent de-waxing,polishing wastes material	One to four types of agents shall be used according to the type, color,density or degree of abrasion of the stone	Crystal Shield is easy to use,has wide applications, only need green and blue shields.
Availability of Tools	Polishing machine,polishing pad	Crystallizing machine ,steel wool	Crystallizing machine ,Polishing pad ,steel wool
Corrosion	Stong alkali de-waxing agent dissolves stone,mica and metal ions	Steel wire will be heated black, which permeates on the stone, forms iron rust or yellow spot, leads to stone bleaching.	It's a neutral or slightly acid formula with PH value 5-7,which prevents the acid fading due to use of crystallizing agent.
Cost	High	Middle	Wear resistance is generally two to three times size of crystal materials,saving labor and material cost effectively
Environment Amiability	Contail MMH,phosphor etc, harmful substances	Contain organic solution; and the acidic ingredient may react with steel wire, generate poisonous gas,which severely affects people's health.	Water-based environmental protection formula.
Overall Property	Poor	Middle	Excellent

The New Plating Technology

The new plating technology
High quality crystal and metal nanoparticles can be plater a layer which is stable, disperse, coprecipitate.
With the function of smooth filtering and reflex, lasting long shine
.full and transparent of texture.



SR is the new maintenance product specially developing for efflorescence problems. It can penetrate into stone and block the pores, let the water out and let Ca (OH) 2, salt and other material can't release out, cut off the efflorescence of stone surface, effectively to prevent and treat the efflorescence and damping of stone.

Range of application:

The efflorescence and damping during marble maintenance or renovation process.

Method of application:

1. Apply SR to the surface of the stone that is suffer from e florescence.
2. Rinse the floor with water and clean up.
3. Let the floor completely dry, polish the floor with Marble Kristallux.



SR

Efflorescence Resistance Solution



With new unique superfine crystal particles , tiny heat which generated by friction with steel wool 1#, stimulate its active ingredient and then formed a high-strength crystal protective layer on the granite , with the advantages of wear-resisting, bright and easy operation,suitable for large area.stone polish paste.

Range of application:

Granite、 Artificial quartz

Method of application:

1. Clean the granite floor surface and air dry clean
2. Spray the chemical on the granite floor (10ml/ m²) , use polishing machine with steel wool 1# to polish 1-2 minutes;after polishing until dry,the granite gets on a high-strength crystal protective film immediately; If necessary, can be repeated more times;
3. In a humid environment, it recommends to use stainless steel wool during the crystallization process;
4. For the place which wear a lot can use stone polish paste to conduct a preliminary processing;
5. Use dust mop to push the dust and the operation is complete.

(Important tips: if it is the newly renovated light color granite or under the condition of wet weather, please use the stainless steel wool, or use the 3M white pad with stone polish paste first)



GR

Granite Crystallization



KR

Marble Kristallux



With new unigue superfinecrystal particles,tiny heat whichgenerated by friction with steel wool,stimulate its activeingredient and then formed a high-strength crystal protectivelayer on the marble.It is best care product for marble andartificial stone, is creates a hard and bright crystal layer in amoment,lasting luster.

Range of application:

It is best care product for marble and artificial stone, terrazzo, it creates a hard and bright crystal layer in a moment, lasting luster.

Method of application:

1. Clean the floor up and dry it up naturally
2. Spray the KR on the floor (5-10ml/m²).Then use the steel wool or 3M white pad fitted the machine ,Rub it dry evenly. Then it takes one or two minutes.
3. If have dust then clean up and use the KR and repeat step 2,makes the layer more stronger and shine.
4. If use KR first time, need to do 1-2 times normally, the floor will become more shine.
5. Clean up the floor and the operation finish. Maintenance in the future, just spray a layer of KR.
6. Important tips: light color stone in a humid environment,it recommends to use stainless steel wool.

Environmental formula, without excitant odour, the greatest degree of reducing the harm of human body and the environment. It is best care product for marble and artificial stone, terrazzo, it creates a hard and bright crystal layer in a moment, lasting luster.

Range of application:

Marble and artificial stone, terrazzo

Method of application:

1. Shake it before using, put right amount MR on the stone, 1m² needs about 5-8ml of chemical.
2. Polish with red or white pad by the crystallization machine. If the floor dry too fast when polishing, then add small amount of water and polish it until dry.
3. Can be repeated many times.



MR
Marble Polish Paste



TR
Artificial Stone Crystallization



With new unique superfine crystal particles, tiny heat which generated by friction with steel wool 1#, stimulate its active ingredient and then formed a high-strength crystal protective layer with the advantages of wear-resisting, anti-pollution, good shine, fast to come out bright, high efficiency of construction. Suitable for high-grade office buildings, shopping mall and high traffic place.

Range of application:

Artificial stone grinding care project, daily maintenance.

Method of application:

1. Clean artificial stone and let it dry evenly;
2. Spray the chemical on the artificial stone floor, use polishing machine with steel wool 0# to polish 1-2 minutes, after polishing until dry, the artificial stone gets on a high-strength crystal protective film immediately;
3. If necessary, can be repeated more times;
4. In a humid environment, it recommends to use stainless steel wool during the crystallization process;
5. For the place which wear a lot can use Revontulet stone polish paste to conduct a preliminary processing;
6. Use dust mop to push the dust and the operation is complete.

Unique high strength fine crystal particles,it plates a high-strength crystal protective layer on the stone surface,can quickly fill the micro holes, covered stone cracks and scratches,generate clear,moist and durability of the crystal layer,bring your floor full bright visual effect.

Range of application:

Granite,polished ceramic, artificial quartz, and marble which is hard to come out brightness.

Method of application:

Put adequate amount AR on the floor, use the crystallization machine ,with 3M white pad to polish until it dry.

If the stone is rough and has many pores, polish it 1-2 more time.



AR
All Purpose Polish Paste



DR
Stone Rebond



Special repair empty drum of ceramic tile, loose engineering, high hardness empty drum glue, with the advantage of moistureproof & anti-aging efficiency, effective permeability without missing glue, unshrinkable and no sunken,durable.

Range of application:

Stone, empty drum or loose ceramic tile

Method of application:

1. According to the stone or empty drum ceramic tile, cut open 4 seams of stone or ceramic tile, or can punch a 4 mm and 6 mm intermediate hole size on the stone, two holes (one for material in,one for air out),and clean up.For ceramic tile,we don't recommend drilling in the middle.
2. Open the cap of Stone Rebond, aim the pointed at side seam or small hole, put Stone Rebond inside, while beat with a rubber hammer, hammer the plate or using pressure bottle filling until filled.
3. Wipe off the stone material surface with wet cloth.
4. Two hours later, continue to try to fill until fill up again, and then wipe off the stone material surface with wet cloth, if there is adhesive, wet the place with wet cloth, and then use the blade to shave off.
5. After 24 hours,can walk on the surface,after 48 hours can cut the seam and fill glue,and grinding with water,7 days can reach the highest intensity.

SR 2in1 stone reinforcing consolidator is suitable for natural stone specially for soft and high water absorption stone, can effectively reduce the loss of calcium carbonate ion in stone, with excellent waterproof function. SR is conducive to pores sealing, cracks covering, it can be used before or after grinding.

Range of application:

All kinds of marble, granite, artificial stone, sand stone, serpeggiante and terrazzo.

Method of application1: Revontulet Dry Grinding System

1. After dry grinding with 100#, spread SR thinly, after 20 mins air drying; dry grinding with 200#; spread SR thinly again, after 20mins air drying; dry grinding with 400#.
2. To achieve best performance, we suggest to use with Revontulet dry diamond pad.

Method of application2: Wall Grinding

1. Spread SR thinly on the wall, after 5mins grinding with diamond pad.
2. Repeat the above steps and grinding from rough to fine with diamond pad.

Method of application3: Wet Grinding

1. First, after grinding to 150#, clean up the stone surface and dry it up;
2. Paint the SR on the stone surface;
3. 30 min later, scrape or absorb away the residue chemical;
4. After 12-24 hours, finish hardening and then start crystallization processing.
5. For special soft stone apply SR again after grinding with 300#, same method as above.



SR
Sandstone Reinforcing Consolidator



GT-1000
Stone Protective Grinding Fluid



GT-1000 is suitable for all kinds of natural and artificial stone which its water absorption is high. Permeability material, It won't become film on the stone surface after applying. It won't change the appearance or deepen color, or become yellow; The moisture can be through the stone with excellent breathability; no flammable and water-based environmental protection. After applying GT-1000, the stone has a good performance of water

Range of application:

All kinds of marble and granite, rough surface stone, fire board, stone carvings.

Method of application:

Renovation treatment:

After diluting the product with water 13-15 times, use the liquid as water for grinding.

Surface protection treatment:

After diluting the product with water 13-15 times, can be used as waterproof and protective agent.

The surface must be clean before applying, no water, no wax, no dust, no oil and other attachments. After 12 hours, can achieve the excellent effect of waterproof & oil resistance & antifouling properties.

Stone filling hardener is suitable for natural soft and loose stone material, can effectively reduce the loss of calcium carbonate ion in stone, inject into loose stone, fill tiny cracks and shrink the pores, make surface more density, increase the hardness of stone, forming a strong protective barrier on the stone surface.

Range of application:

All kinds of marble, granite, sandstone, serpeggiate, terrazzo, etc.

Method of application1: Revontulet floor dry grinding system

1. Dry up the floor after 100 # with a refurbished machine, thin coating SK, dry up 20 minutes and dry grinding with 200#; thin coating SK again, dry up the floor about 20 minutes and dry grinding with 400 #.
2. The performance is best if use with Revontulet dry diamond pad.

Method of application2: Wall grinding

1. Thin coating the SK on the wall with a cloth(The dosage is about 1 minute of evaporation), wait about 10 minutes and grinding with wall grinding diamond pad.
2. Repeat the above steps, and grinding from rough to fine.

Method of application3: Wet Grinding

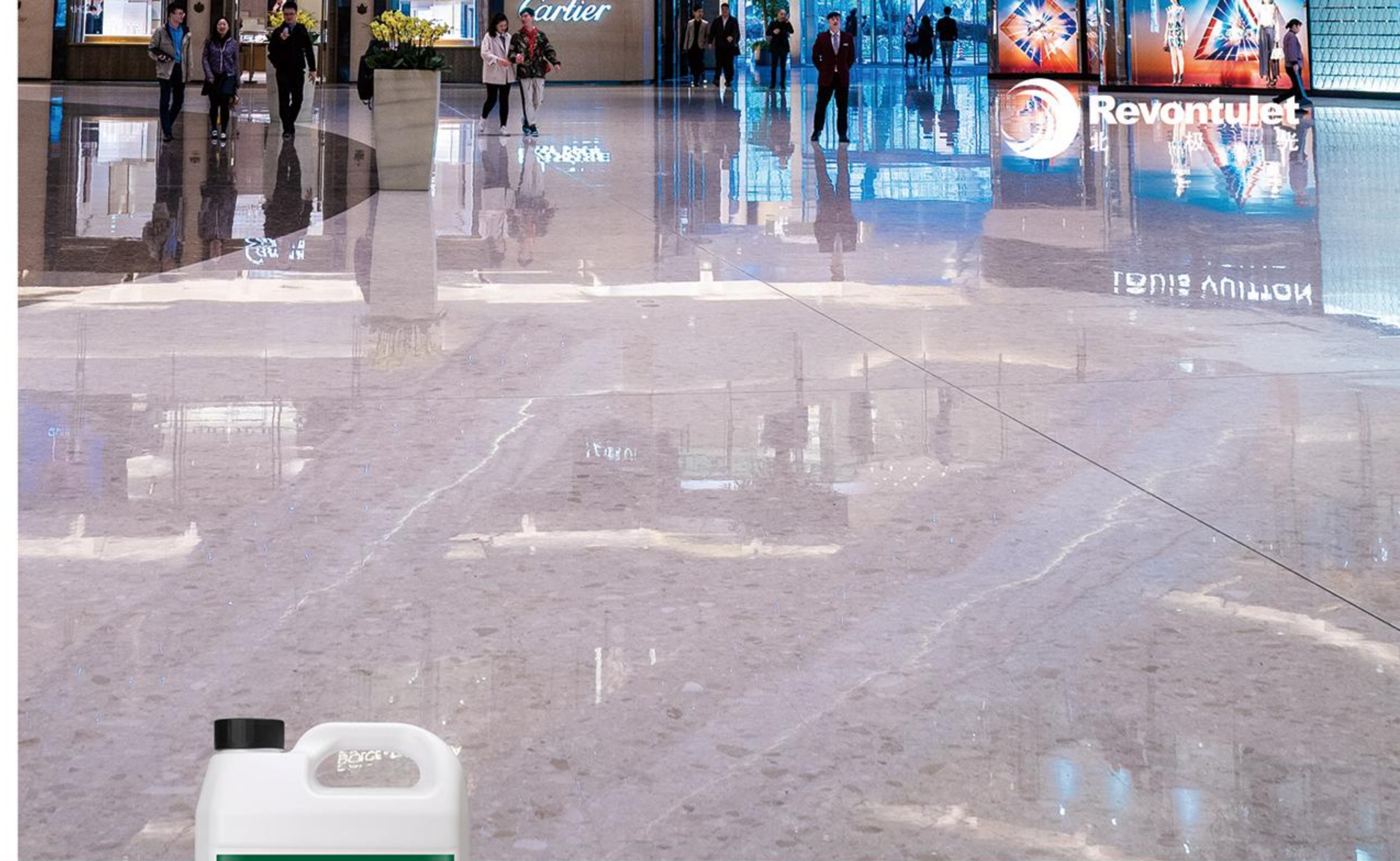
1. After grinding to 150# ,clean up the stone surface and dry it up;
2. Paint the SK on the stone surface;
3. 30 minutes later, scrape or absorb away the residue chemical;
4. After 12-24 hours, finish hardening and then start grinding.
5. For special soft stone,apply SK again after grinding with 300#,same method as above.



SK
Stone Filling Hardener



HP
Stone High Speed Polish



Unique super fine crystal particles, tiny heat which generated by the friction with soft pad materials, activate its active ingredients and permeate into the molecular structure of the stone, cover a high-strength crystal protective film on the stone surface, highlight the texture of stone shiny & watery, at the same time, the crystal protective film has the advantages of wear resistance, skid resistance, high brightness, waterproof and fouling resistance. Easy operation, high efficiency, especially suitable for large area.

Range of application:

Marble, granite, artificial stone, polished tile, terrazzo, etc

Method of application:

1. Clean the floor up and then dry it up naturally.
2. Spray the HP on the floor(5-10ml/m²),use high speed machine or crystallization machine with 3M white pad.
3. Rub it dry evenly, then it takes one or two minutes. Which causes to produce a high strength crystal protective film on the surface. If require, repeat the above steps.
4. Newly renovated granite and polished tile can apply HP directly.If the marble and artificial stone, terrazzo after grinding or wearing serious, apply Blue shield or Green shield for crystallization first.
5. Use dust mop to clean up the floor, the operation finish.

A clean routine maintenance product for Ceramic. Used to maintain wet look in high traffic areas. Boost the gloss of Ceramic surfaces by utilizing our unique abrasive technology to repair minor damage caused by daily foot traffic and daily use. A polishing cream that maintains an ultra high gloss on polished Ceramic floor. Produces a deep shine with excellent slip resistance. Responds brilliantly to all spray bur-nishing techniques.

Range of application:

Marble、man-made marble、 quartz stone

Method of application:

Put right amount Revontulet speedmax polish paste,1 square meter needs about 3 to 8 ml of paste,grind it dry and polish by the crystallization machine ,with white or nano pad.Clean up or polish slightly the floor after the copletion of polishing,and then push the dust.



MR

Extreme Polish Paste



KR

Revontulet Kristallux



KR is the best care product for marble and artificial stone ,terrazzo ,granite. It creates a hard and bright crystal layer in a moment ,lasting luster. Environmental formula,without excitant odour, the greatest degree of reducing the harm of human body and the environment.It won't corrode the steel wool, avoid the stone disease because of the yellowing of steel wool .

Range of application:

Product for marble and artificial stone , terrazzo ,gran-ite.

Method of application:

1. Clean the floor up and dry it up naturally.
2. Spray the KR on the floor(5-10ml/m²).Then use the steel wool fitted the polish machine Rub it dry evenly.Then it takes one or two minutes.
3. Use the dust mop to push the dust after the opera-tion finish.
4. Apply KR after stone renovation,it polishes 2-3 pro-cesses normally,For daily maintenance, just apply 1 time.

Rich in high-quality natural wood wax with fresh odor, ultra-high hardness, easy application and quick drying, time and labor-saving;
Anti-ultraviolet, anti-corrosion, moisture-proof and mildew-proof, can maintain the natural color of wood flooring for a long time.

Range of application:

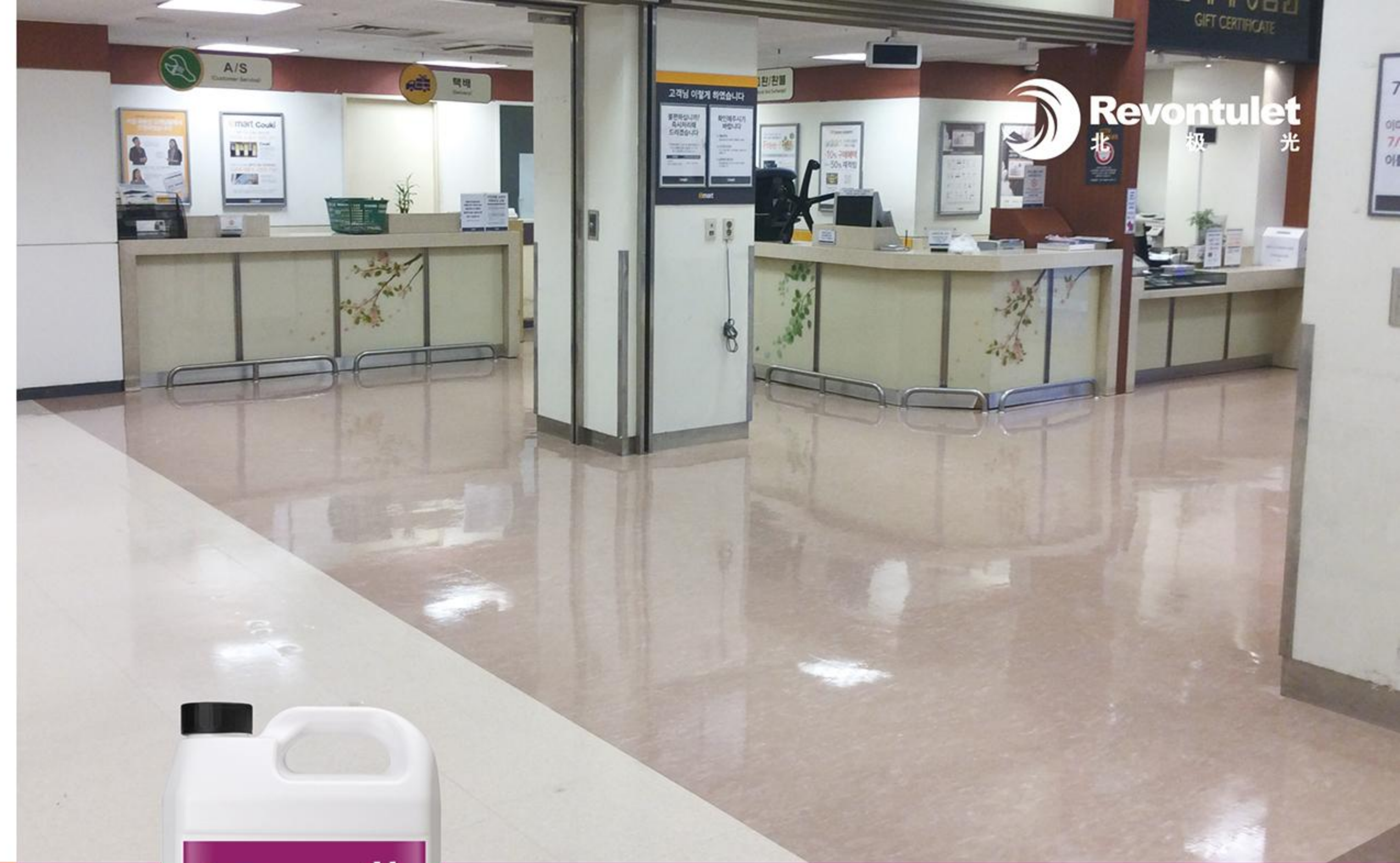
Wood floor and composite floor

Method of application:

1. Clean up the floor and let it dry up.
2. Apply the chemical on the floor with cloth or flat mop. After the floor dry up, put the wax on the floor again. First time to use, it needs apply 2-3 layer.
3. For the future maintenance, use wax stripper to remove the surface wax residue, and apply a layer again.



WF
Wood Finish



PVC
Super Wax Polish



Efficient light formula is suitable to the high-speed polishing machine, creates a luster and bright coating, easy maintenance, long life cycle, comprehensively promotes brightness of Vinyl and PVC floor.

Range of application:

Vinyl and PVC floor.

Method of application:

1. Clean up the floor and let it dry up.
2. Apply the chemical on the floor with cloth or flat mop. After the floor dry up, put the wax on the floor again. First time to use, it needs apply 3-4 layer. For the future maintenance, use wax stripper to remove the surface wax residue, and apply a layer again.
3. If requires the high shine on the floor, let the wax surface dry up. Polish with high speed machine until the floor dry up.

An ideal powder for polishing marble. Can quickly remove dirt caking, soap scum and embedded bsmirch, covering stone cracks, create a glossy and crystal layer. Bring full bright of all angle sensitive for the stone.

Range of application:

Suitable for marble which is mixed with obvious silicate and silica in the composition of calcium carbonate, at the same time, the hardness is hard, such as: golden flower stone, cream-colored stone, white stone, wood stone, brown stone,

Method of application:

Put a small amount of RV-81 on the floor and add a little water. Use red pad or nano pad to polish into yogurt until the floor becomes clear. If you need to add polishing powder, must continue to add water, and polish into yogurt. At the end of the work, use a clean pad to clean the floor.



RV-81
Marble Polish Powder



RV-82
Marble Polish Powder



RV82 is a high-performing polishing powder which is used to polish and to achieve a wet-look shine on the marble and engineering stone. This powder is very effective in restoring gloss to the floors. It protects the flooring from scratches and scrapes, giving it a long-lasting shine and restoring the beauty of the marble floor.

Method of application:

1. Refurbish and grind the marble to grit 800 # with resin diamond pad.
2. Each operation covers an area of approximately 2 square meters, and approximately 100 grams of powder and 300 grams of water are placed on the marble surface respectively
3. Grind and polish the floor for about 1-2 minutes with red or white pad. During the process, scrape the powder slurry with glass scraper and observe until an oily crystalline film is formed on the surface of the stone, and the operation can be completed.

Suitable for the crystallization process of marble and artificial stone, have the functions of cleaning, repair and crystallization. New stone care formula, can quickly repair fine pores form a dense layer, make the marble become hard and beautiful, resist weathering make the marble and artificial stone stay in the best state permanently.

Range of application:

Marble, Man-made quartz stone and so on.

Method of application

1. Shake thoroughly before using, put right amount MR for using, 1 square meter needs about 5 to 8 ml of paste.
2. Grind and polish by the crystallization machine , with red or white pad. If the floor dry too fast when polish then add a small amount of water and grind it to dry.
3. Can be repeated more processes.



MR
Marble Polish Paste



GR-1 / GR-2
Crystal-reinforcing Paste



A unique polishing liquid contains a proprietary silica fluoride which creates a reflective crystal surface on black color stone. It generates an invisible barrier, making water and dirt on the stone surface easy to be cleaned. At the same time, it enhanced color & density, with durable stone surface.

Range of application:

GR1:Black granite, black marble, black artificial stone, black polished tile and all kinds of drark color stone.
GR2:Granite,artificial stone,polished tile and etc.

Method of application:

1. Clean the floor up and dry it up naturally.
2. Spray the GR on the floor(5-10ml/m²).use 3M white pad with crystallization machine to rub it dry evenly,then it takes one or two minutes.
3. If have dust then clean up and use the GR repeat step 2,makes the layer stronger and more shine.
4. If apply GR first time need to do 1-2 times normally to make floor more shine.
5. Clean up the floor and the operation finish. For the future maintenance, just apply 1 layer of GR.

A clean routine maintenance product for Ceramic. Used to maintain wet look in high traffic areas. Boost the gloss of Ceramic surfaces by utilizing our unique abrasive technology to repair minor damage caused by daily foot traffic and daily use. A polishing cream that maintains an ultra high gloss on polished Ceramic and Terrazzo floors Produces a deep shine with excellent slip resistance Responds brilliantly to all spray burnishing techniques.

Range of application:
Ceramic and Terrazzo floors

Method of application

1. Clean the floor up and dry it up naturally
Spray the TR on the floor(5-10ml/m²). use the nano pad or 3M white pad with crystallization machine
2. Rub it dry evenly. Then it takes one or two minutes
3. If have dust then clean up and use the TR repeat step 2, makes the layer stronger and more shine
4. If use TR first time, need to do 1-2 times normally, the floor will become more shine
5. Clean up the floor and the operation finish. For the future maintenance, just apply 1 layer of TR.



WR

Wall Crystal-reducing Agent



TR

Ceramic & Granite Crystal- enhancing Paste



Being the perfect combination between nature and science, the new method for stone care originates from the fine grinding grains are able to sense the stone texture in no time, cover the pores and defects, optimize ray receiving ability, and achieve the mirroring effect on stone surface as attractive as magic polar light.

Range of application:
Marble, granite, ceramic tile, artificial stone and varieties of stones.

Method of application:

1. Use hand polisher and equipped with soft white pad to polish.
2. Pour appropriate amount of WR on white pad surface, and polish it evenly.
3. When the floor becomes dry, and continue polishing until the stone becomes extremely bright.

GT - 9000 protective agent is suitable for various bibulous rate high natural stone and artificial stone, permeability material, it doesn't change the appearance of stone, not deepen color, not become yellow; Moisture can penetrate, permeability is strong. After processing of stone material has a good water-proof, prevent oil, antifouling performance, fight disease .

The treated stone has good water-proof, oil-proof and antifouling properties, and can resist the appearance of disease and efflorescence.

Method of application

Surface treatment: the surface must be clean, no water, wax, dust, oil and other attachments.

Stone dry: surface must be dry, in order to achieve the best effect of permeability, prevent the production of color difference.

Construction technology: spray or hand brush, saturated brush until the surface is wet for several minutes. If you need better results, you can do it again in an hour.

For maintenance: after five minutes, wipe off the surface residue with cloth, keep ventilation, at least 24 hours before application.



GT-9000 Gloss Sealer



PS Protective Shield



Suitable for seal protection for all kinds of high water absorption natural or synthetic material (such as stone, inferior smooth, fire boards, antique plate, etc.) it can deepen the color and lustre of stone, especially recommended in square, channel, the seal protection for the surface of parking lot and wet stick base or weathered marble surface.

Product features:

1. Enhance the natural color of stone.
2. Powerful protection against a wide variety of stubborn oil and water-based stains.
3. To prevent microbial growth
4. Low smell, safety and convenient to use.

Method of application:

Surface treatment: The surface must be clean, no water, wax, dust, oil and other attachments.

Stone dry: Surface must be dry, in order to achieve the best effect of permeability, prevent the production of color difference.

Construction technology: Spray or hand brush, brush the surface and wet for a few minutes. For better effect, can be done one more time after an hour.

Keep ventilation, at least 4 hours before application.

Unique high strength fine crystal particles, can quickly fill the micro hole, covered stone cracks and scratches, generate clear, moist and durability of the crystal layer, bring your floor full bright visual effect.

Range of application:

Granite, polished tile, inorganic, engineered stone which is hard to come out brightness.

Method of application

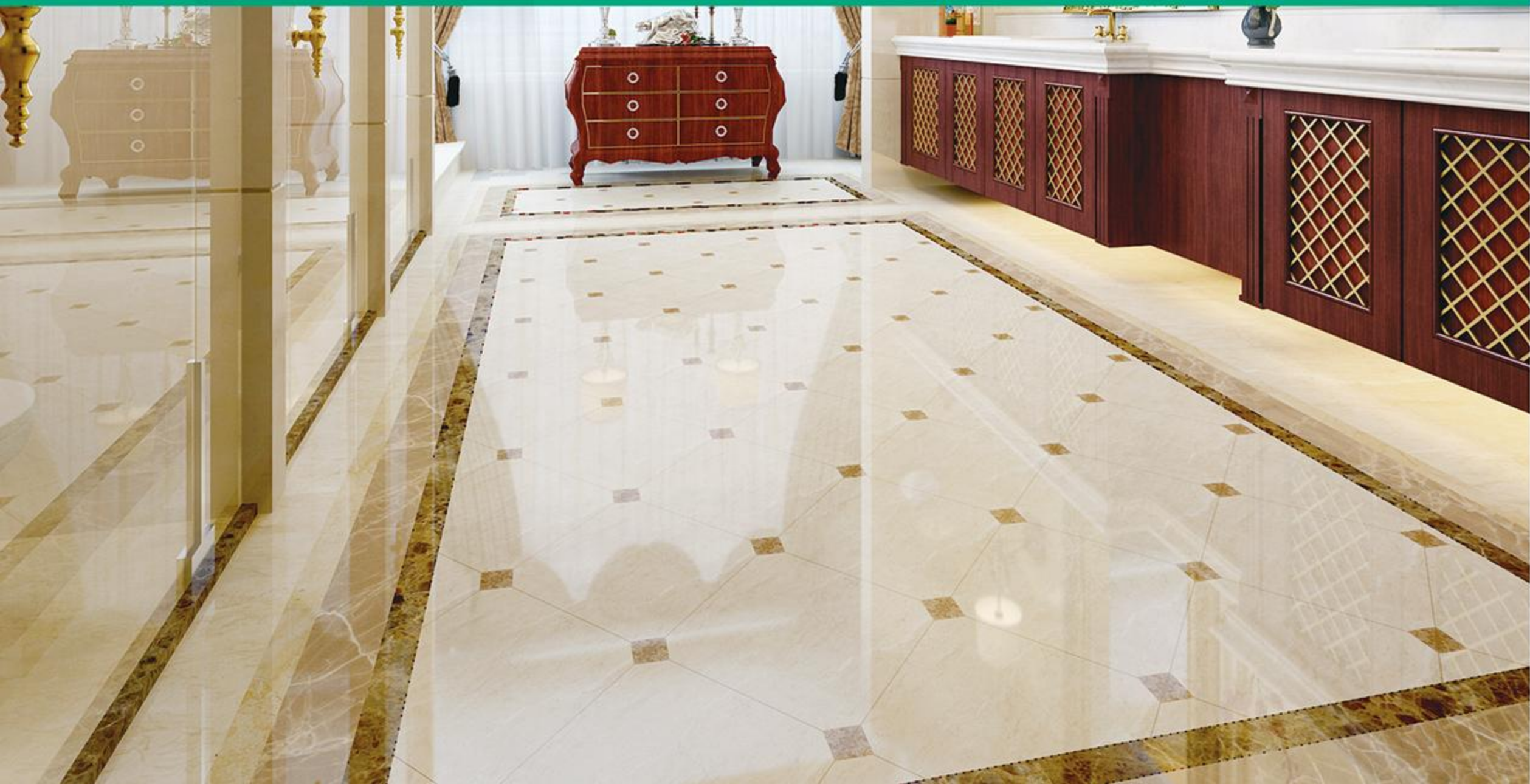
Put adequate amount chemical on the floor, use the crystallization machine, with white pad to polish until dry. If the stone is rough and has many pores, polish it 2-3 processes.



CP
Crystal Paste



SC
Swift Deep Floor Cleanser



Swift Deep Floor cleanser is a mild formula, contain a variety of active agents, it can remove the surface or deep stain of objects without leaving scratches, achieve the renovated effect.

Range of application:

Polished tile, microlite, artificial stone, granite, marble.

Method of application

1. Put cleanser onto surface, (can spray small amount water)
 2. Wipe with wet cloth or scrub with floor machine
 3. and red pad.
- Clean away the the stains, and then clean up the surface.

Packing: 3kg/pail or 10kg/pail

Stone Black Pigment is a kind of long lasting, quick dry and fresh colorant, can be used in different stones, such as granite, marble and so on.

The colorant can charge the original color of the stone surface, it can also make the surface of the stone more shine and the color is not easy fading.

It can give the stone a new image of rich color, good nobility, this product does not contain corrosivity, can be waxed after use. Color include: red, black, white, green, yellow, brown, dark brown and other colors to choose.

Method of application:

1. The stone surface must be clean and without any coating.
2. Use brush, roller or cotton yarn to paint the pigment on the stone surface. After it is dry, wipe off the floating dust.
3. After 10mins, use Green shield with steel wool 0# or 1# to polish the floor 1-2 time
4. Use dust mop to clean up the dust and the operation is complete.



SP
Stone Black Pigment



WP
Protective Shield



Water-based environmental protection materials are widely used in indoor and outdoor squares and passages. After being used, they can resist various stubborn oil and water stains, prevent the growth of microorganisms, facilitate operation, and enhance the natural color of stones.

Range of application:

All kinds of matt floor and concave and convex stone with high water absorption, such as matt stone slabs, fire boards, antique boards, terrazzo, inorganic stones, etc.

Method of application:

1. Clean the floor to ensure no water, wax, dust, oil and other attachments on the surface.
2. The stone surface can be painted after dry up the floor.
3. Spray or brush with hands, keep ventilation after painting, let the floor dry at least 8 hours before treading.

It contains fine nano particles which can quickly fill the micro holes and repair the dark crack of stone, at the same time ,it can make the layer thicker and more shine, with the function of waterproof and anti-fouling, efflorescence and wear resistance .

Range of application:

Black stone, sandstone, and the stone which is loose and easy efflorescence and difficult to do maintenance.

Method of application 1:

1. Clean the stone surface and let it dry;
2. Apply QR evenly on the stone material surface ,10ml/m², let it dry naturally about 90%, use Green shield or KR with steel wool 1# to polish.

Method of application 2:

The process after stone renovation:

1. Dry grinding with 500 # first, and apply the product evenly on the stone material surface, after 30 minutes, remove the chemical which cannot absorb into the stone, after the surface hardening and continue to renovate until #3000, and then do the polishing.
2. After 10-20 minutes, the surface is about 90% dry, use Green shield or KR with steel wool 1# to polish.(If requires high gloss,use Blue shield with 3m pad to do polishing one more time)



QR
Stone Coated Agent



WR
Stone Polish Wax



Stone Polish Wax & Magic Black Stone Wax
Rich in natural wax, which can rapidly brighten the stone,to achieve crystal luster and smoothness.

Range of application:

Stone Polish Wax: Marble,granite,ceramic tile,artificial stone and varieties of stones.

Magic Black Stone Wax: Marble, granite, black stones.

Method of application:

1. Use hand polisher and equipped with soft white pad or steel wool pad .
2. Pour appropriate amount of WR on the stone surface, and spread it evenly.
3. Buffing with hand polisher and pad,reduce the pressure when the floor becomes dry, and continue polishing until the stone becomes extremely bright.

The combination of 4 + 1, four effects syncretic
Fill hole and repair crack for stone material surface, good adhesion and wear resistance.

Strong penetration, it can penetrate into the stone structure;High gloss, it can greatly improve the strength and glossiness of stone material;Good weatherability, transparent rubber, the shrinkage rate is small, water resistance, oil resistance, aging resistance and color no change after curing;Applicability is wide and can be used in seams of adhesive for all kinds of stone.

Range of application:

Suitable for all kinds of stone, concrete crack, sand holes, defect repair of loose, damage, etc.

Method of application:

1. Clean the floor and natural drying;
2. Mix the glue accurate than 4:1 ratio by weight and fully stir well;
3. Put the glue solution into the cracks, every few minutes scrape the joint 1 time, repeatedly for 2-3 times;
4. When we joint the broken stone, fix two planars of fracture stone, apply crystal glue to repair and enhance the structural of stone;
5. At room temperature (25°C) conditions curing, we do polish or grinding after 24 hours, when the temperature below 15 °C, the curing speed will be slow down obviously and curing incomplete, it needs to take the way of heating to promote curing, it can be under the condition of 50 to 60 °C ,heating and curing. After 4-6 hours cooling to room temperature ,it can do polishing and grinding.



SG
Stone Crystal Glue



TY
TOLEPOXY

TOLEPOXY is a modified type anti-aging quality marble glue, strong waterproof and damp resistance , the material utilization rate is as high as 95%, easy to operate, high working efficiency ; Effective permeation and adhesiveness, no leaking, no shrinkage &collapse, no yellowing, durable and prevent from stress and stretching with good toughness.

Method of application:

Mix part A and B well at 1:1 ratio, room temperature require about 25°C,efficient working time is 45minutes for mixing adhesive and it will be completely cured after 24 hours.

TOLEPOXY is the adhesive for jade,marble,granite,white marble and light stone,can effectively prevent colloid become yellow, oil spilling and cracking, ageing resistance. It allows polishing and color mixing.

Spring epoxy is a flexible epoxy glue, because of Expansion and Contraction, some materials will change their volume lead to separate with other materials, so Spring epoxy can release the stress, makes the different materials can stick in different situation.

Characteristic:

Flexible, polishable, environmentally friendly, zero solvent

Method of application:

1. The surface must be dry, dust and grease free and possibly slightly roughened.
2. Mix carefully A:B=2:1
3. Can be polished after 12 hours.



A&B

Spring Epoxy



IPS-1000

Marble Rust Remover

IPS1000 can be used to efficiently remove yellow spots due to the absorption of laying materials. Make sure that the rust-stained surface has not been treated with wax or other water repellents; remove any such material if necessary.

Method of application:

Wet the surface to be treated, take a small quantity of IPS1000 with a spatula and apply it on the rust-stained surface in a uniform manner using a brush or a roller. Apply a layer a few millimeter thick, wait a few minutes until the gel color turns dark purple (up to 1 hour if the material to treat is polished), cover with a plastic film, wait for another minute and then rinse with water and remove any residues. Repeat the treatment if necessary. If a purple halo remains visible on the material, apply the product again only to the halo surface, taking care to immediately remove it as soon as the color becomes purple. If the halo persists, it is possible to use the CLEAN SPECIAL product to remove it. Perform a test on a small area before using the product, in order to determine the product reaction time. Keep in its original package





Keep it clean,Keep it green,With ecoclean.



High-speed polishing wax



Efficient light formula is suitable to the high-speed polishing machine, creates a luster and bright coating, easy main-tenance, long life cycle, comprehensively promotes brightness of stone.

Range of application:
Marble, terrazzo,polished tile and plastic floor.

Method of application:
1. When waxing the floor again, we should put wax on the bottom first, and let it dry.
2. Apply wax machine on the floor 1 to 2 times, each time interval should be 30 to 60 minutes. to ensure that each floor wax membrane dry.
3. After 2 to 4 hours do polishing.

Floor Cleaner



Contains both non ionic and cationic surfactants to disintegrate various stains. Used for oil stains, building stains, various colored stains, nicotine, asphalt, etc. that are often difficult to remove on hard surfaces and passages. After use, it does not affect its original color and is clean as new.

Range of application:
Natural stones such as tiles, granite, marble, terrazzo, artificial stones,and PVC flooring.

Method of application:
1. Cooperate 1: 30 times against the water with the brush machine or mop to clean the floor, and then wash with the clean water, suck the water and let the floor dry
2. For daily maintenance, use dust mop with dust oil to push the dust.

Granite Rust Stain Remover



Granite rust remover is highly oxidized rust remover, especially suit to natural granite, artificial stone, ceramic tile, etc., it can deeply remove stains, rust stains, mildew spots, yellow spots and etc. It will not turn yellow and change the stone color after use.

Method of application 1:
Apply with Granite rust stain remover with brush or paint brush on the stain, until the stain remove.

Method of application 2:
If the stain is too deep to remove with brush.
1. Soak the chemicals into the tissue and put on the stain.
2. Use plastic film to cover on the tissue.
3. After 12 hours,clean the floor up.

Marble Rust Stain Remover



Marble rust remover is highly oxidized rust remover, especially suit to natural marble, it can deeply remove stains, rust stains, mildew spots, yellow spots and etc. It will not turn yellow and change the stone color after use.

Method of application 1:
1. Apply with Marble rust stain remover with brush or paint brush on the stain,until the stain remove.
2. Clean the floor with alkali cleaner.And use clean water to wash the floor again.

Method of application 2:
If the stain is too deep to remove with brush.
1. Soak the chemicals into the tissue and put on the stain.
2. Use plastic film to cover on the tissue.
3. After 12 hours,clean the floor with alkali cleaner. And use clean water to wash the floor again.



Oil Cleaning Agent



Ultra strong oil and dirt removal all-purpose water, powerful decontamination, efficient cleaning for heavy oil, no residue, no impact on the original color, safe and environmentally friendly.

Range of application:

Daily cleaning in hotels, airports, supermarkets, factories, and other fields.

Method of application:

Determine the dilution ratio based on the severity of the dirt.



Neutral detergent



Mildly and neutral detergents are suitable for a variety of textures and daily cleaning. The negative ion and the non-ionic properties have excellent penetration, emulsifying, dispersing particles of dirt and is easy to rinse. Objects are fresh, bright and clean after washing.

Method of application:

1. This product will be watered about 1:20. (1:40 to less stains)
2. After watered, spraying detergent on furniture, office table, glass or metal surface with a soft cloth to wiping back and forth twice to remove stains.
3. Detergent can be used in floor stains cleaning.



Wall Wax



This product contains natural wax and macromolecule polymer, can rapidly brightening wall to crystal like luster and smoothness

Range of application:

The wall of Marble, granite, ceramic or artificial stone and so on

Method of application:

Put wall wax into the sprayer, spray directly on the wall surface, and then polish with hand polishing machine and white pad until dry



Solid wax for stone



Using unique formula system of metal chain polymer, can cooperate with various ground maintenance system, high hardness, good wear resistance, is designed for the high flow and low maintenance frequency and design.

Range of application:

Suitable for marble, granite, terrazzo, polished tile and all kinds of plastic on the ground

Method of application:

1. Ground, if left with Chen vinegar to start the wax before the ground dry, first coated with wax 1-2 times.
2. Apply the wax directly to the ground for 2 or 3 times, and the wax will be repeated for 30 minutes between each time.
3. After 2 hours, low speed or high speed polishing (or not polished) can be performed.
4. Maintain the wax with the spray or all-around maintenance wax.



Fast Stripper



With the intensity of infiltration and the dissolving capacity, can quickly and affectively dissolve all kinds of wax, and other oily Material, after reasonable diluted washable hard texture plate surface oil and water-based dirt. For All kinds of marble and terrazzo, PVC and so on the ground.

Method of application:

1. This product will be 1:5-8 against the water, the first test water wax removing effect, and then determine the against the moisture content.
2. Will add water wax from the water by each area of 10 square meters of wetting for 10 minutes, and keep the ground wet.
3. Using a single disc machine with black pad up wax.
4. Water 1 to 2 times can be, let the surface dry before waxing procedure.



Wood Floor Wax



Rich in high-quality natural wax and special resin, simple construction, easy maintenance, moisture-proof, dust-proof, wear-resistant and anti slip effect, long-term use does not change color. Can keep the original color of wood floor.

Method of application:

1. Clean the surface dust, stains the old wax and stay dry ground, besmear first bottom wax 1-2 times.
2. With the wax directly applied to ground 2-3 times and to be dry ground. Such as the polishing effect is better.
3. Maintenance wax available led electrostatic dust agent or neutral detergent to clean and dry.



Antistatic wax



Advanced conductive polymer synthesis technology, durable and efficient electrostatic dissipation function can effectively eliminate electrostatic accumulation, so that surface resistance and grounding resistance can be maintained at 10-10 ohms. The ground clean, bright, wear-resisting wax film protection layer, make daily cleaning more simple and efficient.

Method of application:

1. Remove the original wax layer with waxed water and waxed cushion and clean with clean water.
2. When the ground is completely dry, use a clean wax to mop the product evenly onto the floor. Wait for about 30 minutes. After the wax layer is thoroughly dry, apply the second layer of wax. Apply three to five layers as needed. Do not pour the remaining wax back into the container.
3. Cover the wax regularly and apply anti-static wax to the ground.



Static dust collecting agent(Solvent based)



Adopt oil-based and water-based composite formulation, contain high quality cosmetic grade oil and water soluble polymers. After using it will release appropriate static, absorb the dust with high efficiency and other dust on the surface, after that the surface clean and glossy, and keep fresh and pleasant aroma.

Range of application:

Dust removal on the ground of hotel lobbies, airport lounges, supermarkets, property management and other places.

Method of application:

This product will be sprayed directly on the bottom of the form after the dust mop semi state. When daily dust accumulated much for a long time, use a mild detergent or rinse to clean and use our product after it dried.





All-purpose Glue Remover



It is suitable to all kinds of colloid removal. Its peculiar dissolving agent, dispersing agent can effectively remove the hard and carpet surface of colloid pollutants removal.

Range of application:

Chewing gum, shoe polish, ink, asphalt, tar stickers stains and other stains.

Method of application:

1. Put the chemical into the spray bottle, spray on the surface and wait 2-3 mins, and then use brush or the shovel to clean.
2. It can also remove lipstick, tea, etc.
3. After removing the glue, use neutral or alkaline cleaner to wash the residual stain.



Brass Polish Fluid



This product can quickly remove the surface of metal oxides, rust stains and other stains, use to form protective film, making the metal surface clean as new.

Method of application:

Apply a little of this product scouring pad or soft cloth and then wipe to significant light to light. If the result is poor, the proposed re-use.



Glass cleaner



Quickly send forth air to moderate combine clearance bad smell, the aroma composition's match for possess singly is clean Turn the outside of the air, and have to disinfect effect. Make after use person clear comfort, stay joss-stick hold out for long time, it is essential article in the places, such as work, rest and amuse-ment. etc.

Method of application:

1. Apply the original liquid to about 1:20 to 25 times water, spray on the glass surface with a spray bottle, scrub with a water cleaner, and scrape with glass.
2. This product can be used to clean the windshield of the car and about 1:30 to the water.
3. This product can be used to clean the surface of refrigerator, computer, fluorescent screen and so on.



Hand Wash



New sour lkal balance formula combination, propety genlality, have already sweep with disinfect dual achievement effect, smell fragrance, foam abundant, long-term usage ability prevent from a skin dry and open crack, the double protect your hands.

Method of application:

Squeeze this article in center of palm part usage empress blunt water.



Scale cleaner



This product is refined from composite acids, various active additives, stone protectants, etc. It effectively cleans stains, cement spots, scale, white spots, water marks, yellow stains, and mold on stone and hard surfaces. It is a deep cleaning agent for stone that does not damage the surface gloss of the stone, can be used at room temperature, does not leave any residual pigments in the stone, and has no effect on the stone itself

Range of application:

The lime and cement residue and thin layer on marble, granite, sandstone board, antiskid rock board, cement, terrazzo, ceramic tile, and stone cleaning in kitchen, bathroom, swimming pool and exhibition hall.

Method of application:

According to the severity of pollution, dilute with water in the ratio of 1:1 to 1:5, wet the stone in advance. When applied to the stone surface, the surface can be covered with fresh-keeping film. After 5-30 minutes, use a brush or the floor brushing machine scrub the floor. Rinse thoroughly with water after cleaning.



Solar photovoltaic panel cleaner



Photovoltaic panel specific cleaning agent is designed specifically for outdoor photovoltaic panel maintenance and cleaning. This product is made by compounding imported surfactants, special additives, chelating agents, corrosion inhibitors, etc.

Range of application:

This product is suitable for cleaning common dust, oil stains, small insects, bird droppings, etc. on outdoor photovoltaic panels. It can quickly remove dirt, has high cleanliness, and is not easy to leave water stains after washing.

Method of application:

Wash at 1:20 times diluted with water; heating cleaning effect is better; rinse with clean water thoroughly after cleaning. It is suitable for equipment or manual cleaning.



Tire mark stains cleaner



Range of application: All kinds of floor materials such as epoxy resin floor, marble, ceramic tile, artificial stone, cement hardened floor, PVC and other black stains left by rubber tires can be cleaned.

Method of application:

1. Put Tire mark stains cleaner into the floor washing car at a ratio of about 1:40-80. For severe stains, it is recommended to reduce the proportion of mixing water, wet the stained surface for 2-3 minutes, and then brush with washing tools.
2. It is used to clean and decontaminate the wheel surface of the automobile, and then fully rinse it before maintenance with tire polish.



Cement Dust Cleaner



This product contains organic acids and heterogeneous surfactants, as well as a special dirt suspension stain remover, which can quickly remove dirt, cement residue, algal blooms, and oily stains on hard surfaces without damaging surface gloss.

Range of application:

Cleaning of surfaces such as exterior walls, tiles, polished tiles, terrazzo, marble, etc.

Method of application:

1. Apply the original liquid 1 to 10 to 30 times water, then spray onto the surface of the object, and wet it for 1-3 minutes with water gun or water.
2. For heavy stains, it is recommended to reduce the ratio of water to water. After washing, the water should be fully cleaned. This product does not apply to metal surface cleaning.



Coating Remover



The coating remover adopts advanced water-based formula technology, which can penetrate the stubborn coating and epoxy cleaning residue on the surface of the substrate and easily remove it. Suitable for wood, paint, metal, marble, ceramics, glass, etc.

Method of application:

1. Shake evenly before use and do not dilute for use;
2. Squeeze out the coating remover and cover it on the surface of the adhesive;
3. Allow it to fully penetrate and soften the cleaning agent. The duration of application should be based on the type of coating;
4. Do not dry the coating remover on the substrate. If the product starts to dry and solidify, add cleaning agents to keep the base surface moist;
5. After the gum dissolves, it will fall off gently with a rubber spatula;
6. Wipe off any residue with a towel;
7. If stubborn residues need to be cleaned multiple times, repeat steps 2-5;
8. Do not let the remover come into contact with the epoxy resin joint for more than 3 hours.



Soap Scale Cleaning Agent



Daily cleaning should not damage the surface, leave no stripes, or damage the substrate. Natural stone, stone crafts, ceramic tiles and gaps, avoiding mold, easy to clean.

Range of application:

Natural stone materials, such as marble, granite, limestone, travertine, slate

Method of application:

1. Spray this product directly onto carpet stains (stubborn stains can be soaked for 3-5 minutes).
2. Scrub with a brush or wipe with a cloth.
3. Use a clean absorbent cloth to dry up moisture.
4. Repeat the above steps if necessary.



Anti Fingerprint Cleaner



Efficient decontamination formula, effectively removes various dust deposits, oils, and fats. Cleans without leaving streaks, prevents fingerprints, is safe and environmentally friendly, and does not harm hands. After cleaning the metal, it can restore its own luster and effectively hinder the re accumulation of dust.

Method of application:

1. Spray the stained area directly;
2. Use towels or sponges for construction;
3. After cleaning, wipe the surface dry;
4. Please clean the heavily stained area multiple times.



Carpet Stain Remover



This product is suitable for various stains on carpets and fiber surfaces, effectively dissolving and separating tea stains, coffee stains, beverage stains, grease, lipstick, blood stains, etc., without causing any damage to the carpet.

Method of application:

1. Spray this product directly onto carpet stains (stubborn stains can be soaked for 3-5 minutes).
2. Scrub with a brush or wipe with a cloth.
3. Use a clean absorbent cloth to dry up moisture.
4. Repeat the above steps if necessary.



Keep it clean, Keep it green, With ecoclean.

Levighetor 650

--floor grinder complete of Planetary K1500.

LEVIGHETOR 650 is the ideal machine for grinding and polishing medium-large areas. Thanks to Planetary K1500 with a 20"/500mm working section and 8"/200mm tools it is particularly fast for polishing large areas. Very stable and easy to use. It can fit tools 8"/200mm or 3"/75mm. Thanks to the klindex' patented 360° directional wheels that allow to move the machine in any direction, the Levighetor 650 can work in both large and narrow areas like bathrooms and kitchens. With its powerful 4HP motor, the Levighetor 650 is the only mono-phase machine in the world that can work with additional weights for a total of up to 160kg (350lbs)

The TOP version includes:

Planetary Head K1500, tank, pad holder, brush, directional wheels, standard wheels and kit pad holder velcro baked 200mm.

Accessories include:

Planetary disc K1500, water tank, needle disc, floor brush, universal wheel, standard wheel

Model	Motor	Volt	Hz	Motor speed	Work width	Tool size	size	Water tank	Weight
650 (TOP)	2900W	220	50/60	155rpm	500mm	3X200mm	65X35X52	18L	122kg
650 (VS TOP)	3000W	220	50/60	120-250rpm	500mm	3X200mm	65X135X52	18L	133kg



UFO

--Porable grinding planetary machine to polish counter tops and stairs.

UFO is a manual planetary polisher for grinding and polishing counter tops, stairs, edges and narrow areas. Thanks to its powerful motor and to the counter-rotating planetary it is possible to grind and to polish marble, granite and concrete. It differs from all the others machines on the market for its robustness and its perfect balance. The speed of the abrasives is studied in order to make the machine stable, easing the grinding and polishing operations. It is supplied with splash guard and connection for vacuum cleaner.

Accessories include:

Water tank, splash guard, Velcro needle plate set

Model	Motor	Volt	Hz	Motor Speed	Work Width	size	Water Tank	Weight
UFO	750W	110/220	50/60	330-770rpm	295mm	37X39X30 (cm)	2L	26kg



Kroma

--The most powerful single disc machine with 4HP motor

Kroma has been designed for heavy duty applications. With an innovative 4 HP motor it is the most powerful mono-rotary cleaning machine in the world. It is also available with a 2,5 - 3 - 4 HP motor. Thanks to its great range of available accessories it can solve any problem in the most economic way.

The price of machine does not include any accessories.

Model	Motor	Volt	Hz	Motor speed	Work width	size	Water tank	Weight
Kroma (17"HD)	1900W	220	50	150rpm	430mm	61X118X43	18L	53kg
Kroma (17"TOP)	2200W	220	50/60	120-250rpm	430mm	61X118X43	18L	53kg
Kroma (17"VS TOP)	2900W	220	50/60	120-250rpm	430mm	61X118X43	18L	53kg



Waterfire

--Porable grinding planetary machine to polish counter tops and stairs.

WaterFire is the ideal machine to achieve a perfect grinding of natural stones, concrete, wood and a perfect polishing of countertops, shelves, tables and narrow areas. It can be used as a edge grinder, as well as a stairs bush-hammer and as a joint chaser thanks to its extra accessories.

Main Features:

- The only hand grinder with IP54 Protection in the World.
- Exceptional asynchronous motor strength, compared to a traditional motor it lasts longer thanks to the protection from external agents like water or dust.
- Oversized Gears and bearings, compared to a traditional hand grinder.
- Spherical wheels to achieve a perfectly flat surface (to avoid the wave effect).
- Front led light to check the working area.
- Rotating head feature, for Joint chasing application.
- Variable Speed.
- Wet or Dry grinding operation (equipped of a water nozzle).

Model	Motor	Volt	Hz	Motor speed	size	Dimensions tools	Weight
waterfire	750W	220/110	50/60	500/1600rpm	45X33X23cm	125/150mm	10kg



Kristal Revolution

--4HP Polisher machine 500rpm

Kristal Revolution is the new and revolutionary system to polish and maintain glossy and "not slippery" granite, engineered tiles, quartz stone, marble floor.

Fast and easy to use, is the best way to polish, restore, maintain and create a safe flooring with a high friction coefficient.

With a 4hp motor, 24" working section, dust collector, led light for a better check of gloss, Kristal Revolution is the new way of flooring crystallization.

The machine includes: Pump, led light, support for Kristal tank. Other accessories are optional.



Model	Motor	Volt	Hz	Motor Speed	Work Width	Noise	Size	Water Tank	Weight
KRISTAL REVOLUTION	4HP	220	50	500rpm	610mm	72dB(A)	85X104X65	18L	90kg

KRISTALLUX

KRISTALLUX is a special product to crystallize marble, artificial stone, terrazzo. It creates a hard and bright crystal layer in a short time and with good resistant and durable performance. Environmental formula without any irritate odor.

INSTRUCTIONS:

To wash the floor surface. When the floor is perfectly dry spray a little amount of product on the floor, fitted with steel wool and crystallization machine, polish 1-2 minute until dry. For wet environment or white color marble, we suggest use 3M white pad instead of steel wool.



Vertika

--Grinding and polishing machine for walls and vertical surfaces with built-in vacuum system

VERTIKA is another Klindex exclusive. It is the only machine in the world that cleans and polishes vertical surfaces! It is also ideal for walls, columns, stairs, bathrooms, kitchens, counter tops etc. It has a variable speed from 0-1000 RPM and it can work both wet and dry. Thanks to its incorporated vacuum system there is no dust or splashing.

Complete With: Tank, Vacuum System, 5 mt pipe, Kit pad holder, handle.



Model	Motor	Volt	Hz	Motor Speed	Work Width	size	Vacuum Tank	Weight
vertika	1900W	220	50/60	0-1000rpm	100/150/240 mm	118X81X57	27L	55kg

POLISH KP 80/85

--Polish KP80/85 is a special powder to polish marble

The most economical polishing powder. Excellent for daily maintenance of polished marble, terrazzo, porcelain and glass surfaces.

POLISH KP80/85 is not only one of the best polishing powder but it is also an excellent chemical for daily cleaning of hard surfaces. It cleans quickly and polishes a wide range of surfaces including marbles, granites, ceramics, porcelain and glass surfaces. It is fine abrasive (to be mixed with water) to remove fungus, soap scum build-up and embedded stains in grouting immediately. This product is suitable for use in kitchens, restaurants, shopping mall, and all type of stone surfaces, whether with honed or rough surface textures.

Instruction to use: Spread a small quantity of POLISH on the floor (about 100g) and add some water. By using Discolux or a white disc on a normal rotary machine, make a cream like yogurt and work until the gloss comes out. Add some POLISH and water from time to time. At the end of work, carefully wash with water by using a white disc. When the floor is dry, polish with white disc or Discolux.



SETTING NEW
STANDARDS



HYPER
GRINDER

STANDARD EQUIPMENT

HG 17KR

HG 17KR TOP is a very powerful and robust single-disc machine designed for professionals who are looking for outstanding performance and unparalleled solidity. Equipped with motors ranging from 3Hp to 4HP, it proves to be the most powerful single-disc machine on the market. Combined with the complete range of available accessories, it adapts to every need in the most efficient and cost-effective way. It is also available with adjustable speed.

Model	Motor	Volt	Hz	Motor Speed	Work Width	size	Water tank	Weight
(17"HD)	1900W	220	50	150rpm	430mm	61X118X43	20L	45kg
(17"TOP)	2200W	220	50/60	120-250rpm	430mm	61X118X43	20L	53kg
(17" VS TOP)	3000W	220	50/60	120-250rpm	430mm	61X118X43	20L	62kg



X
MARBLE

HYPER ORBIT

HYPER ORBIT is the new rotary-orbital single-brush that makes working on all surfaces easy and fast. Suitable for treatments such as • polishing, • dewaxing, • shining, • micro-sanding on marble, concrete, stone, parquet, terracotta and stoneware, Hyper Orbit is also ideal for cleaning delicate surfaces such as carpets and rugs. The oscillating head adapts to all surfaces and allows you to work easily even on uneven floors, minimizing the workers effort.

Model	Motor	Volt	Hz	Motor speed	Work Width	Size cm	Water tank	Weight
HYPER ORBIT 1500	1500W	230	50/60	1400rpm	430mm	70X43X128	18L	56kg



HRC 750 ST

The new floor grinder HRC 750 SELF TRACK has 2 traction dedicated motors that allow to operate the machine in all directions. The ergonomic controls on the handle permits any operator to set and drive the drift control as well as the direction and the working speed of the machine. With the HRC 750 SELF TRACK, hourly productivity can be significantly increased by minimizing the risk of problems arising from manpower fatigue at the same time. The DCT system allows you to choose to smooth use only using the rotation of the tools (DCT ON mode), or with the classic complete rotation of the planetary (DCT OFF mode).

Model	Motor	Volt	Hz	Motor Speed	Work Width	Size cm	Water Tank	Weight
HRC 750 SELF TRACK	11KW	380-480	50/60	600-1300rpm	750mm	750X110X123	46L	700kg



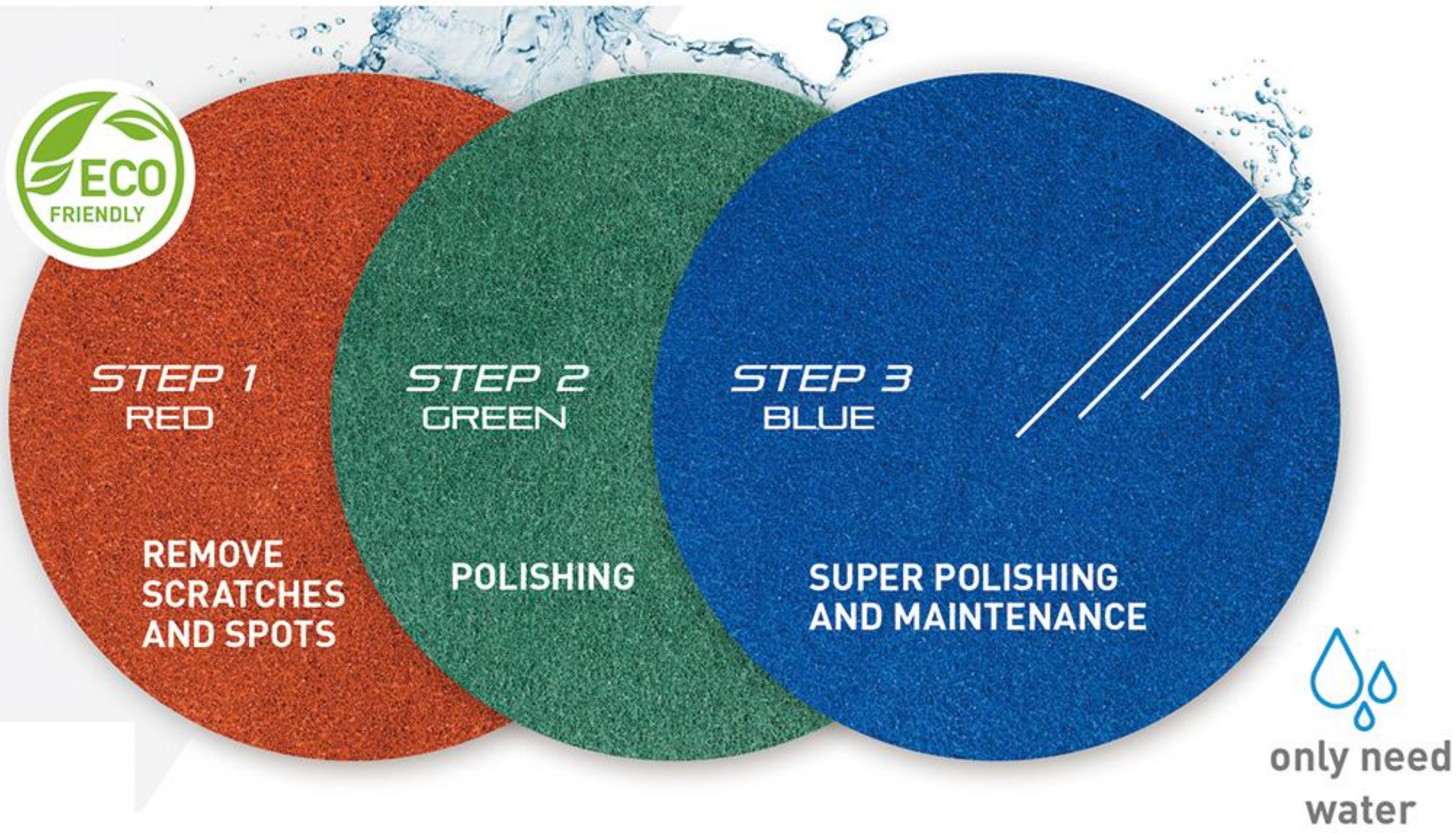
Hypervak 76

Professional vacuum cleaner specially designed for those working in the field of grinding and polishing concrete floors. It can be used to vacuum both:

- Large quantities of dust during dry grinding.
- Liquid or mud during wet polishing.

Model	Motor	Volt	Hz	Surface filtering cm²	Aria Aspirata max m³/h	size cm	Weight
Hypervak 76	2 X1400	230	50/60	14000	400	114X170X65	78kg





THE PERFECT TRIS IS TRIPAD

The Tripad range of discs differs from normal discs for the new natural fiber support, the high concentration of diamond resin and the great strength and durability of the disc in the most extreme conditions. It comes in 3 colors, Red, Green and Blue. RED TRIPAD the most aggressive, quickly removes scratches, acid stains and strong dirt. GREEN TRIPAD gives tone and color on the surface leaving mechanical polish. BLU TRIPAD gives a high gloss and can be used for routine maintenance of the floor.

THE NEW REFERENCE SYSTEM.

THE HIGHEST LEVEL OF GLOSSY.

The new TRIPAD discs are ideal for mechanical polishing of surfaces with no experience required, anyone can achieve incredible results without the risk of making damages.

With TRIPAD discs you will always get amazing results. They suffer no alterations in hot, humid or cold climates. You will be fully satisfied with their economy, speed, results and ease of use



RESTORATION
MARBLE FLOOR

In just 3 steps, using water in succession, the RED, GREEN and BLUE discs smooth and restore the mirror polish of worn marble floors.



MAINTENANCE
MARBLE FLOOR

Using only the BLUE disc with water, wash vigorously keeping the marble shiny and shiny like a mirror.



RENOVATION
MARBLE FLOOR

With the only addition of water, without chemicals, TRIPAD gives renewed color and shining to your floors.

POLISH HG85 WHITE

Special Polishing Powder for white marbles and for acid delicate marbles. Polish HG 85 WHITE is a high-performing polishing powder. Its special formulation allows to reach safely high gloss level even on delicate marble without causing any stain, etching, yellowing and imperfection.



POLISH HG85

Polishing powder to polish normal or calcareous marbles. Ideal for polishing and for floor maintenance as well as floor washing. Excellent for the maintenance of hard surfaces. Quickly cleans and polishes a wide range of surfaces including marble, granite, porcelain, and glass. It is an excellent abrasive which, when mixed with water, easily removes stains encrusted. Specific for use in kitchens, restaurants, shopping centers and for all stone surfaces.



CONCRETE HARDENER

Its new formula, with an enhanced lithium concentration, rises from the need of supplying the substrate with quick protection while the silicate is curing, mitigating the risk of penetration and soiling by oily substances, coloured or chemically aggressive aqueous solutions.



HG 120 WP

HG120WP is an HYDROPHOBIC agent in water, concentrated, colorless emulsion, capable of developing a high water repellent performance of concrete surfaces and absorbent mineral building materials.





Revontulet G20(frequency control) --High Speed Polishing Machine

High speed polishing machine, is a combination of strength and speed of high performance mechanical, free to adjust handle height for different height of user, combined with perfect, make cleaning, polishing, crystallization become easier.

Model	Speed	Volt	Hz	Work Width	Cable	Weight
G20	0-1500	220	2.2kw	530mm	12m	83kg

Revontulet T-1

It is a high-performance machine for floor crystallization. Thanks to its special safety switch, it is suited to different height of people. Extremely strong machine with metal gears planetary head. Safe and reliable! Stable gravity then it won't beat irregularly. With universal accessories, it's easy to change vulnerable parts, it can be used for cleaning grinding and polishing with efficiency.

Accessories:
Standard: Water tank
Optional: Pad holder, Weight, Brush



Model	Motor	Volt	Motor Speed	Work Width	Water tank	Weight
T-1	2.5P	220	175rpm	17"	15L	60kg
T-2	2.5P	220	175rpm	20"	15L	60kg



Revontulet G20(20inch) --High Speed Polishing Machine

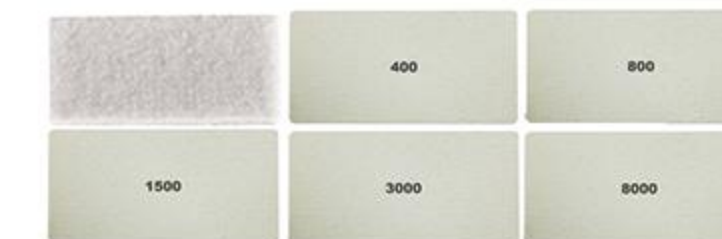
High speed polishing machine, is a combination of strength and speed of high performance mechanical, free to adjust handle height for different height of user, combined with perfect, make cleaning, polishing, crystallization become easier.

Model	Speed	Volt	Hz	Work Width	Cable	Weight
D20	Constant speed	220	2.2kw	530mm	12m	78kg

Revontulet Mini Polishing Machine

M-1 a special machine to clean and polish small areas and some places that are difficult to be cleaned by machines, such as the narrow toilet position, counter top and stair, with different accessories, to achieve various functions. Orbital design, easy to operate, also suitable for non professional use.

Accessories:
 Pad holder, Handle, Pad



Model	Power	Volt	Motor Speed	Work Width	Line length	Weight
M-1	180W	220	2800rpm	250mm	5m	13kg





Mini Easy- orbital cleaning & polishing machine

The 13 inch lightweight oscillating floor scrubber is suitable for small area polishing, with vibration design and easy construction with zero resistance. It does not require training for women to operate easily, saving time and effort, and has high efficiency and safety factor.



Model	Rotation	Chassis Diameter	Power	Weight	Voltage	Cable length
M101	1440rpm/min	13"	350w	15kg/16.5kg	220v	10m

Small Polishing Machine

It is designed for the dead corners of the floor and other areas that are difficult to reach, such as the bathroom and kitchen, which can easily achieve the purpose of cleaning and polishing the floor. The machine is more lightweight and flexible, occupying less space. It requires no special skills, with zero resistance during use.



Model	Power	Insulation class	Ampere	Voltage/Hz	Protection class	Weight	Rotating Speed
SM-1	0.55KW	F	3.88A	220V/50HZ	IP54	18KG	2800X7mm/min



Easy-control Floor Machine (vibration)

Easy and convenient to operate, suitable for large venues, efficient and fast maintenance of the floor, suitable for non professional use. With the Orbital technology, it does not need training and work easily, suitable for floor cleaning and polishing.



Model	Power	Rotation	Chassis Diameter	Weight	Cable length	Voltage
E17	1100W	1450rpm/min	17"	54kg	13m	110V/220V 50HZ/60HZ

Small Polishing Machine

The machine to clean and polish small areas and some places that are difficult to be cleaned by machines, such as the narrow toilet position, counter top and stair, with different accessories, to achieve various functions. Orbital design, easy to operate, also suitable for non professional use.



Model	Power	Insulation class	Ampere	Voltage/Hz	Protection class	Weight	Rotating Speed
SM-2	0.37KW	F	2.73A	220V/50HZ	IP54	16KG	2800X7mm/min



Mini floor scrubber

Strong power and energy-saving, with the combination of three functions of suction, mopping and scrubbing. Digital brushless, dry-wet dual purpose motor with light weight and low noise. It is compact ,easy to transport and high efficiency ,which is ideal for all different kinds of floors such as epoxy resin ,concrete ,marble or tile etc.Widely used in workshop ,super market ,warehouse ,hotel ,airport and hospital etc.

Accessories:

Optional: Pad holder,Brush,Red pad



Work efficiency	Brush disc power	Cleaning power	Charging and working hours	Clear water sewage tank	Work width	Weight
1000m ² /h	260-350w	200w	3/2.5h	3.5L/4.5L	430mm	19.5kg

Three head planetary polisher

Its working efficiency is high, polish and grind various surfaces at a speed of 5 times that of a single head polisher.It can be used with diamond polishing systems, coating abrasives, diamond grinding wheels, or brushes, to meet all your polishing needs. Suitable for countertops, floors, walls, and stairs.

Accessories:

vacuum pipe, handle, installation tool



Model	Power	Volt	No Load speed	Diameter size	Line length	Weight
KH3018	800W	220V	700-3000rpm	4"	3m	2.6/3.6kg



Vacuum Cleaner

Multi-functional dust suction machine, 30L and 80L different capacity for option, water suction, dust suction, household and commercial integration. Stainless steel barrel body, strong and durable, not easy to rust, equipped with silent motor, strong suction. It is applicable to large workshops, warehouse, shopping malls and various cleaning industries.



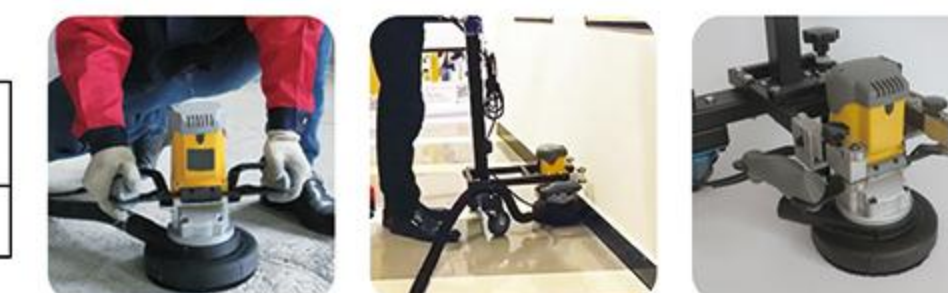
Model	Voltage	Power	Vacuum	Carton size	Height & Diameter	Cable length
KH-6030	220V	1200W	1800mmH ₂ O	425X425X590mm	740&345mm	7.2m
KH-6080	220V	3000W	3000mmH ₂ O	595X530X1050mm	1050&440mm	7.2m

Electric edge grinder

The whole machine is made of aluminum alloy, metal and engineering nylon material, which is strong and durable. Ergonomic design, two-handed operation, more balanced, light, and improve flatness. It can be equipped with work support bracket, which conforms to ergonomic design, is convenient to install, comfortable to operate, and reduces work labor intensity.



Model	Power	Volt	Motor speed	Work width	Line length	Weight
KH3018	800W	220V	0-3000rpm	180mm	4m	13kg



T300 SCRUBBER

Tennant new Li-ion Driving Technology, provides Tennant devices with continually surging power. Li-ion battery adds value to Tennant product with higher efficiency in charging & discharging; longer run time & life time; Maintenance-free features. Tennant Li-ion Battery's packing technique meets stage IP65 water & dust resistance, continually drives your Tennant product in stabilization.

Offers multiple machine head types to fit your cleaning applications and optimize cleaning performance for specific areas -single disk, dual disk, dual cylindrical, and orbital.



Model	Cleaning Path	Solution	Recovery tank	Weight	size	Efficiency
T300	500-600mm	42L	53L	171KG	1372X559X1095 mm	20,000 ft ² /l, 858 m ²

T-260 Walk-Behind Floor Scrubber

With the most available options for product configuration, this walk-behind floor scrubber also adapts to multiple cleaning applications including porous stone, grout and finished concrete.

CS5 Micro-Scrubber

Drop the mop and get a better level of clean with the CS5 Micro-Scrubber. This innovative, 21st century scrubber eliminates many of the challenges of traditional mop and bucket cleaning. Instead of pushing around dirty water, the CS5's separate solution and recovery tanks deliver fresh water for scrubbing. Where traditional mop and bucket cleaning would often leave behind a slick, dangerous floor, the CS5 leaves a safer, drier floor by quietly and effectively recovering used water.



Model	Power	Volt	Solution	Recovery Tank	Work Width	Size	Cleaning Path	Weight
T260	550W	24V	40L	45L	400W	1300X545X1100 (mm)	500mm	141.5kg
Model	Speed	Volt	Solution	Recovery tank	Forward relicity	size	Cleaning path	Weight
CS5	160rpm	36V	5L	5L	3.5km/h	615X412.5X1049 (mm)	280mm	20.2kg

T7/T560 SCRUBBER

Decorative floors often found in retail, health care, hospitality, airports, schools, and light industrial facilities. Micro-rider T7 delivers advanced cleanliness at a much quieter sound level than competitive model. Nimble enough to scrub through doorways, and compact enough to fit on standard elevators.



Model	Cleaning Path	Solution	Recovery Tank	Weight	Voltage	Cable Length
T7	32in/800mm	110L	110L	386kg	1520*1000*1270 mm	56.320 ft ² 5.230 m ²
T560	28in/700mm	70L	75L	262kg	1310*800*1240 mm	4200m ² /h

High pressure cleaning machine

High pressure cleaning machines are widely used in industrial dust removal, urban street cleaning, various motor vehicle cleaning, building exterior wall cleaning, and other fields. Easy to operate, efficient and energy-saving, widely used, and environmentally friendly.



Model	Peak Pressure	Peak water flow	Power	Electric motor control	Weight	size	specifications
1610AOM	160Bar	600L/H	3000W	pressure control	26.6KG	40L*35W*85H	1-230-50
1508AOM	160Bar	500L/H	3000W	pressure control	26.6KG	40L*35W*85H	1-230-50





Epokitt – Resina Epossidica Solida

Epokitt epoxy resin is used in civil engineering where high loading filler (flooring), plastering, concrete reinforcement, structural adhesives, high solid paints, and applications to be injected into cracks, are required. This resin can also be used to reinforce marble slabs, by making it penetrate cracks, or even by welding the fiberglass net in the back of a slab. On some types of granite, it may enhance the wet effect. The product has a real strong power adhesion.

Hardener: Solid or liquid
 Colorable: Yes
 Surfaces to treat: marble, stone, engineered stones, granite and wood.



JOLLY MASTIC TRANSPARENT

It is a mastic with a light colorant absolutely transparent, with high adhesion and short working times which provide for workability after 60 minutes. It also has good adhesion even on quartz agglomerates, wood and cement with good outdoor resistance. One of the distinctive features is its quick setting. Once hardened, it creates a strong long-lasting bond between glued surfaces, rest assured that the strength of the bond depends on the materials to be bonded and proper surface preparation. Additionally, its clarity after curing makes it ideal for applications where visibility of bonded surfaces is important or desired.



EPOKITT EPOXY MASTIC

Epokitt Mastic Epoxy System is a 2k epoxy glue, with inert inorganic charges, thixotropic, and solvent free. As the system is in paste form, it can be applied also to vertical surfaces. Thanks to high reactivity, the system can be used also at low temperatures (up to 5°C). It is ideal for structural adhesion of different materials and shapes (brick, marble, granite, wood, aluminum, iron, porcelain), anchorages, sealing and smoothing. Epokitt Mastic has a neutral color and it can be colored according to users' needs applications.

Hardener: Solid
 Colorable: Yes (coloring pastes)
 Surfaces to treat: Bricks, marble, granite, wood, aluminum, ceramics, glass, rubber.



LINEA BLU MASTIC

Thanks to the total absence of styrene, this mastic is an innovative product right to fill any kind of marble and natural stones. The new formula, a mix of unsaturated polyester resins and high boiling acrylic and methacrylic solvents, has got better physical and mechanical characteristics than common mastics. Linea Blu Mastic can be applied with a strong adhesive power on all surfaces such as: stone, synthetic stone, wood, glass, ceramic, polystyrene, gres, porcelain and others. This product is recommended for indoor applications thanks to the innovative no-styrene formula with a low environmental impact, safe for the professional users' health and odorless. It is recommended for: tile floor builder, construction workers.

Hardener: Solid
 Colorable: Yes
 Surfaces to treat: marble, natural and synthetic stone, granite, wood, glass, ceramic, gres, polystyrene and porcelain.



Extra Lux Selfpolishing varnish for stone

Extralux is designed to guarantee a unique polishing effect on marble, stone and granite. The composition has been studied to ensure a long-lasting and absolutely brilliant polish to the treated surface even after exposure to atmospheric agents. The product can be applied to all surfaces where, since it is difficult to proceed with mechanical polishing, it is difficult to make them shiny, such as, for example, corners, edges, columns. In addition to giving a perfect shine, Extralux guarantees the famous "wet effect" in an unparalleled way, enhancing the original color of the stone, increasing its brilliance and also its water repellency. Ready to use and easy to apply.



JOLLY MASTIC

Jolly Mastic Glass is made of combined synthetic resins and it is mainly used to glue and fill up any type of marble and natural stone. It satisfies any request from the end-user thanks to the available densities. With a strong grip, it becomes very tenacious and perfectly polishing after the drying time. The product is a mastic absolutely colorless after hardening, suitable for particular jobs, such as, for example, if you want keeping the typical marble holes visible, after travertine grouting.

Hardener: Liquid
 Colorable: No
 Surfaces to treat: marble, stone, granite and travertine.



Rechargeable Screwdriver Electric Drill

Rechargeable screwdriver drill, more compact, faster, and stronger. Light-weight in design, Mechanical dual speed.

Maximum output power:	350 W
Ability:	Steel: 13mm Wood: 38 mm
Clamping capacity:	1.5-13mm(1/16-1/2")
Rotation speed (rpm):	Highway 0-1900 Low speed 0-500
Maximum torque:	Hard/soft connection 50/27N. m
Vibration level:	drilling metal: 2.5 m/s ² or less
Sound pressure level:	74 dB (A)
Volume (L X W X H):	169x79x237 mm
Net weight:	1.7 kg(3.8 LBS.)

Solar Panel Cleaning Brush

1. The telescopic rod is stable, lightweight and easy to control
2. Water saving design, low water consumption
3. High density and large-sized photovoltaic fiber brush, no shedding, no damage to photovoltaic panels.
4. Double ended balance power, more stable structural design.
5. Double headed photovoltaic cleaning equipment, with a cleaning width of up to 65cm.



Rechargeable Angular Polishing Machine

Rechargeable angular polishing machine, dustproof and waterproof drop-let technology Used outdoors or in harsh environments, it can prevent damage to tools caused by dust or water droplets.

Workload (using 1 BL1840B battery)	Used for stone cutting (length 600mm) with a cutting depth of 10mm: approximately 19pcs
Ability	Cymbal shaped grinding wheels 100mm (4 ")
Rotation speed (rpm)	8500
Vibration level	Surface grinding with anti vibration side handle: 4.0 m/s ²
Sound pressure level	Grinding with grinding wheel: 2.5 m/s ² or less 80 dB (A)
Sound power	91 dB(A)
Volume (length x width x height)	362x117x140mm(14-1/4"x4-5/8"x5-1/2")
Net weight	2.4kg(5.3 lbs.)



High-pressure floor washer (20 inches)

1. Made of stainless steel material, temperature and pressure resistant, preventing water leakage and rusting.
2. High quality encrypted brush, powerful in removing dirt.
3. Dual high-pressure rotating jet, energy-saving and environmentally friendly, with a wide range of cleaning needs.
4. Stainless steel fan-shaped nozzle, expanding cleaning area.



Handheld Polishing Machine

Elastic rubber covered gearbox. Can effectively protect the surface of precious processing materials from damage and scratches

Rated input power	1200W
Ability	180mm(7")
Rotation speed (rpm)	0 -3200
Vibration level	<2.5m/s ²
Sound pressure level	83dB(A)
Sound power	94dB(A)
Volume (Lx W xH)	431X198X187mm
Net weight	3.4kg(7.5lbs)
Power cord	2.5m(8.2ft)



Handrail elevator cleaning machine

The hand-held elevator cleaning machine uses engineering rubber brackets to install ultra-fine loadsFiber cleaning pad, combined with efficient disinfectant, removes dirt and fine particlesBacteria, with accompanying disinfection function. Provide to major public placesA clean environment.



VC012G rechargeable backpack vacuum cleaner

Hair dryer, increasing the diameter of the air outlet can obtain a larger air volume, and the 3-level speed can be adjusted to achieve speed control

Workload	About 208/120/64 minutes
Capacity	Paper bag: 6.0L Bag: 5.0L
Maximum air volume	2.1 m ³ /min
Maximum sealing suction	20 kPa
Extract power	Mode 1/2/3:45/85/180
Volume (l x W x H)	W301x185 x526 mm
Net weight	6.4- 9.5 kg



Multifunctional water washing machine

Water supply, washing, and drying in one. Powerful function, clean and clean separation,10L clear water tank, 4L sewage tank. 440mm roller brush for seamless cleaning
Elevator, encrypted wear-resistant bristles for one machine, versatile, without lifting the ground, suitable for use Used for cleaning escalators, carpets, and hard floors.





VENTED SLIM JIM

1. Venting channels make removing liners from the container up to 80% easier, improving productivity and reducing the risk of worker injury.
2. 4 bag cinches secure liners around the rim of the container and create quick, knot-free liner changes.
3. Robust handles at the base and rim of the container resist tearing and improve control while lifting and emptying.
4. Rib-strengthened rim resists crushing while the step design prevents jamming when nested.
5. Crafted of the highest quality commercial-grade materials for superior durability.



JANITORIAL CLEANING CART HIGH CAPACITY

1. 40% more storage space than traditional carts minimizes trips for additional supplies and maximizes staff productivity.
2. Water and chemical resistant finish provides easy maintenance and long-lasting good looks.
3. Durable 8" ball-bearing wheels and 4" casters provide maximum maneuverability.
4. Interchangeable handles and removable platform allow user to easily expand or reduce the footprint of the cart to meet specific cleaning and storage needs.



Baby changing stations Antimicrobial protection

1. The countertop is spacious and equipped with adjustable seat belts
2. The corner plate support device enhances the strength and stability of this machine.
3. Modern fashion design combined with Microban technology, it is easier to clean than wood.
4. The child seat is designed to be stackable for easy storage.
5. It can be stored under a standard dining table without a tray.



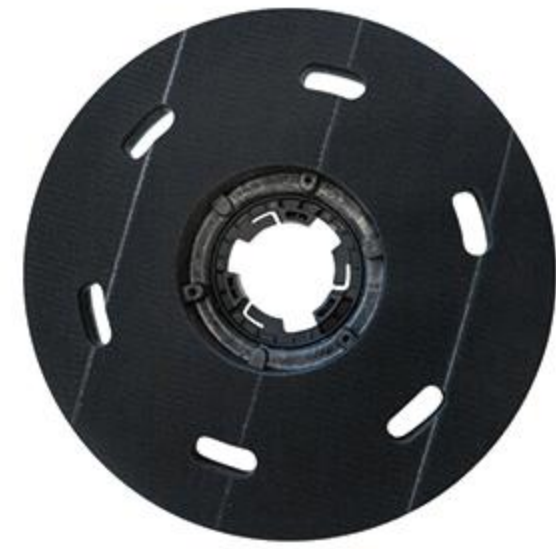
INFINITY ultra high capacity smoking receptacle

1. The ultra-high capacity smoking socket provides exquisite design and all metal structure to realize attractive and efficient smoking and waste management.
2. Design an accessible funnel to reduce blockages during cigarette processing.
3. Stainless steel anti rust, anti fouling, and anti-corrosion.
4. The curved lid can prevent items or garbage from being placed on top and prevent water from entering the can.





17" Pad holder



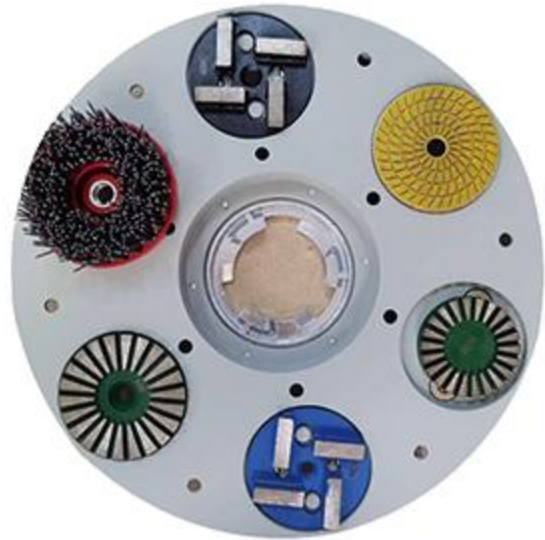
17" Pad holder



Revontulet steel polishing wool/pad
Used for stone renovation, polishing treatment with crystal surface agent and steel wool.



Microfiber cleaning pad
Eco-friendly, with water only. Quickly remove carpet stains, such as coffee and juice stains



17" Aluminum plate



17" Silica/metal brush



3M Pad
Used for stone cleaning, polishing, waxing on the ground, and daily cleaning.



Floor polishing pad
Used for stone cleaning, polishing, waxing on the ground, and daily cleaning.



17" Carpet Brush (175)



17" Floor brush (175)



Hold Polishing Operated Tools
Fast grinding, edge teimming, repairing and maintenance of stone and other similar material and it is used on angle grinder and pneumatic powder tools.



Hold Angle Polishing Machine
Fast grinding, edge teimming, repairing and maintenance of stone and other similar material and it is used on angle grinder and pneumatic powder tools.



17" Pad holder (175)



154/175 Plate buckle

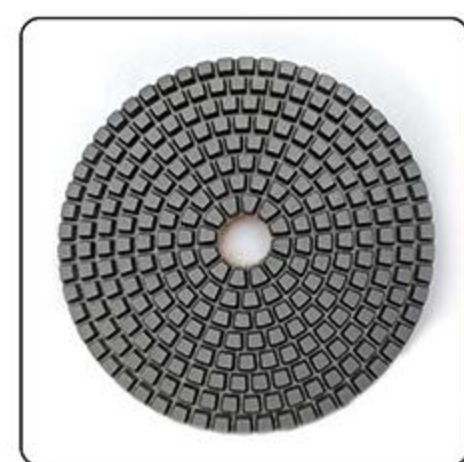


Angle Polishing Machine
Fast grinding, edge teimming, repairing and maintenance of stone and other similar material and it is used on angle grinder and pneumatic powder tools.

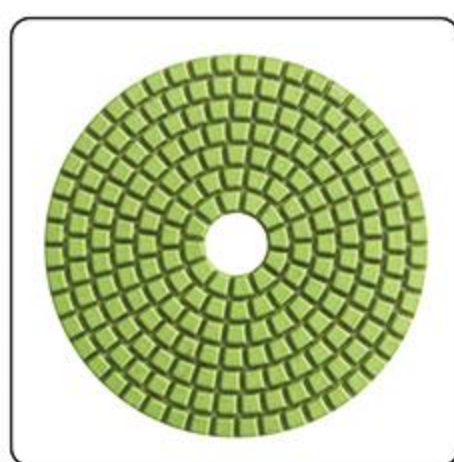


Hand polisher
The buckle is integrated with the chassis, eliminating accumulated tolerances and avoiding the ideal use effect of buckle loosening.

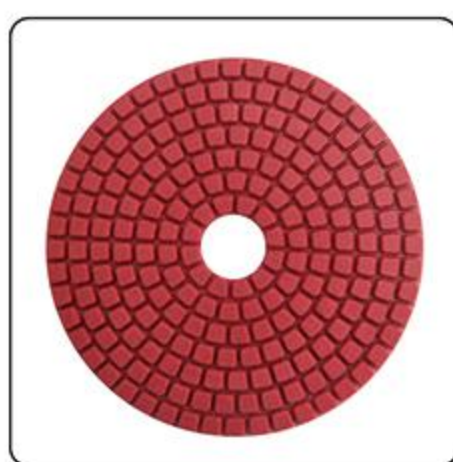
WET POLISHING PAD



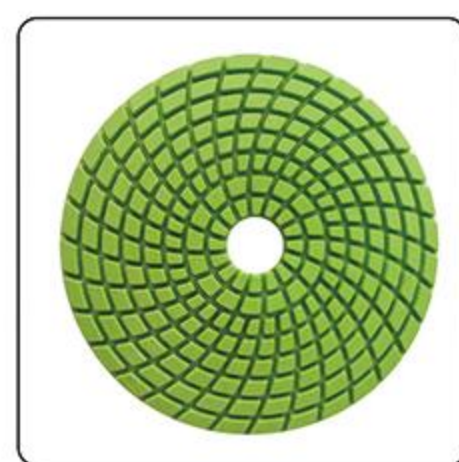
KH-PP-HY-7S



KH-PP-WP-RS



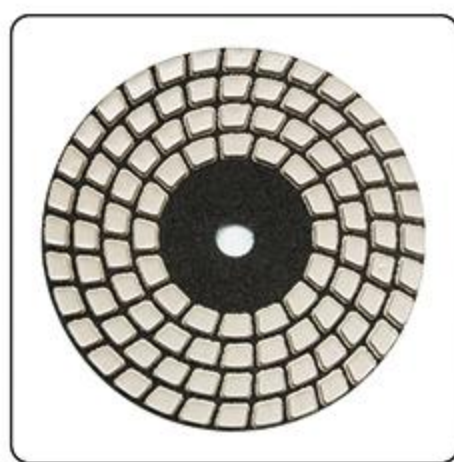
KH-WP-SJ1W



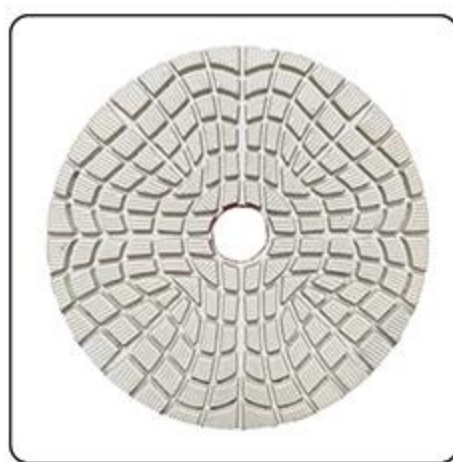
KH-WP-RS



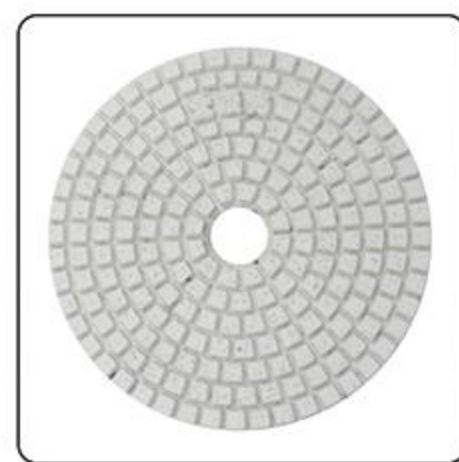
KH-WP-3F



KH-R-1A



KH-WP-3R



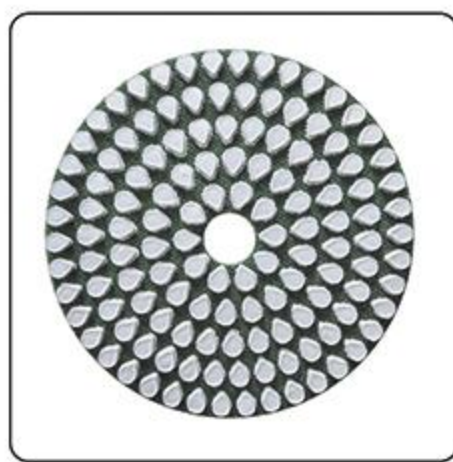
KH-R-2A



KH-HY-5H



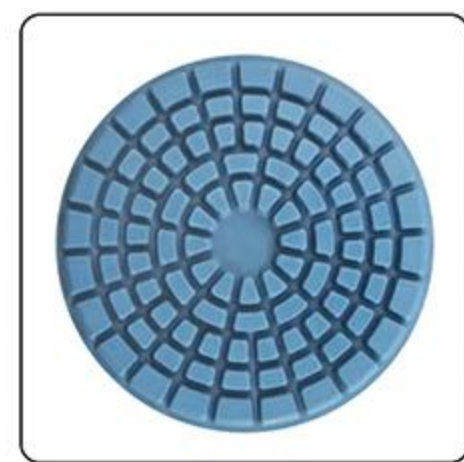
KH-WP-3C



KH-WP-SS



KH-WP-BC



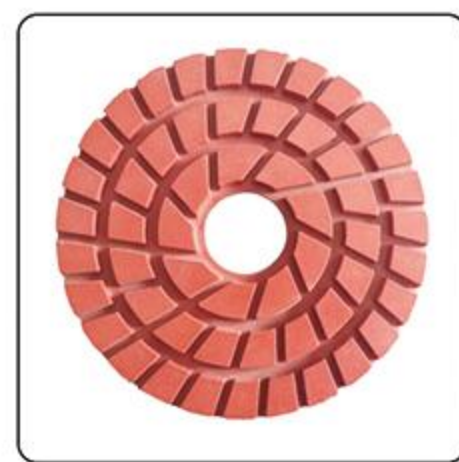
KH-CF-DC



KH-CF-RS



KH-CF-5S



KH-RF-RS



KH-CF-IC



KH-CF-IS



KH-CF-IC



KH-FP4-BC

WET POLISHING PAD



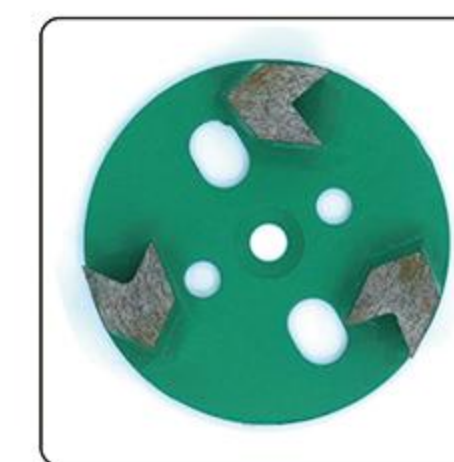
KH-A1



KH-GW-TB



KH-GP-NFF



KH-MGB-24



KH-GD-TBA-2T



KH-GD-TCY-2T



KH-GD-TBA-3T



KH-GD-TCY-3T



KH-SP-F



KH-HP-R



KH-CP-C



KH-WP-R



KH-AB-C



KH-AB-F



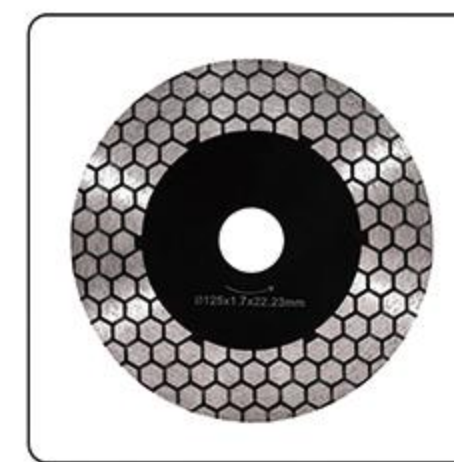
KH-WP-SS



KH-WP-RS



KH-SB-WG-CP



KH-SB-TC-WH



KH-SB-SH-ST



KH-SB-TC-NT

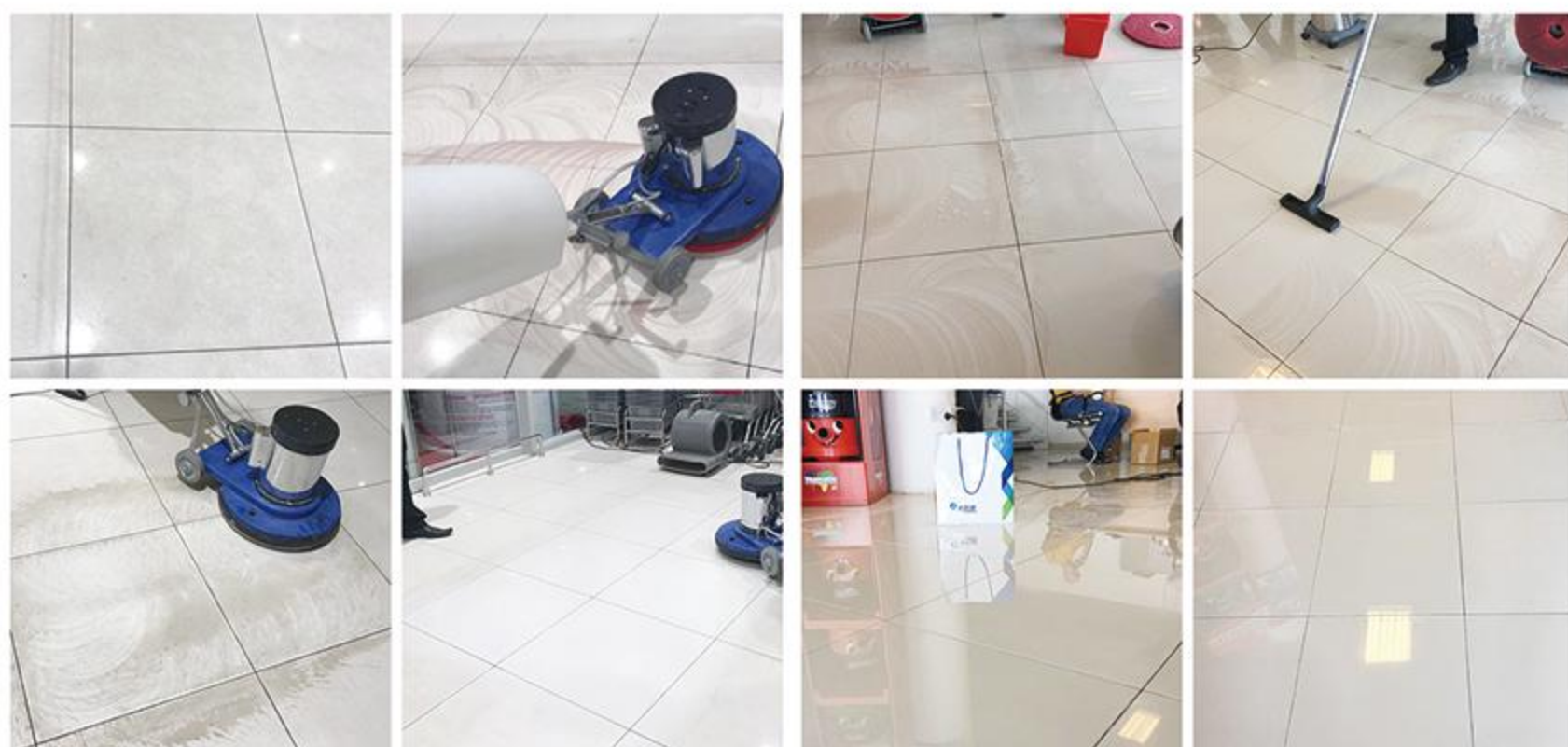
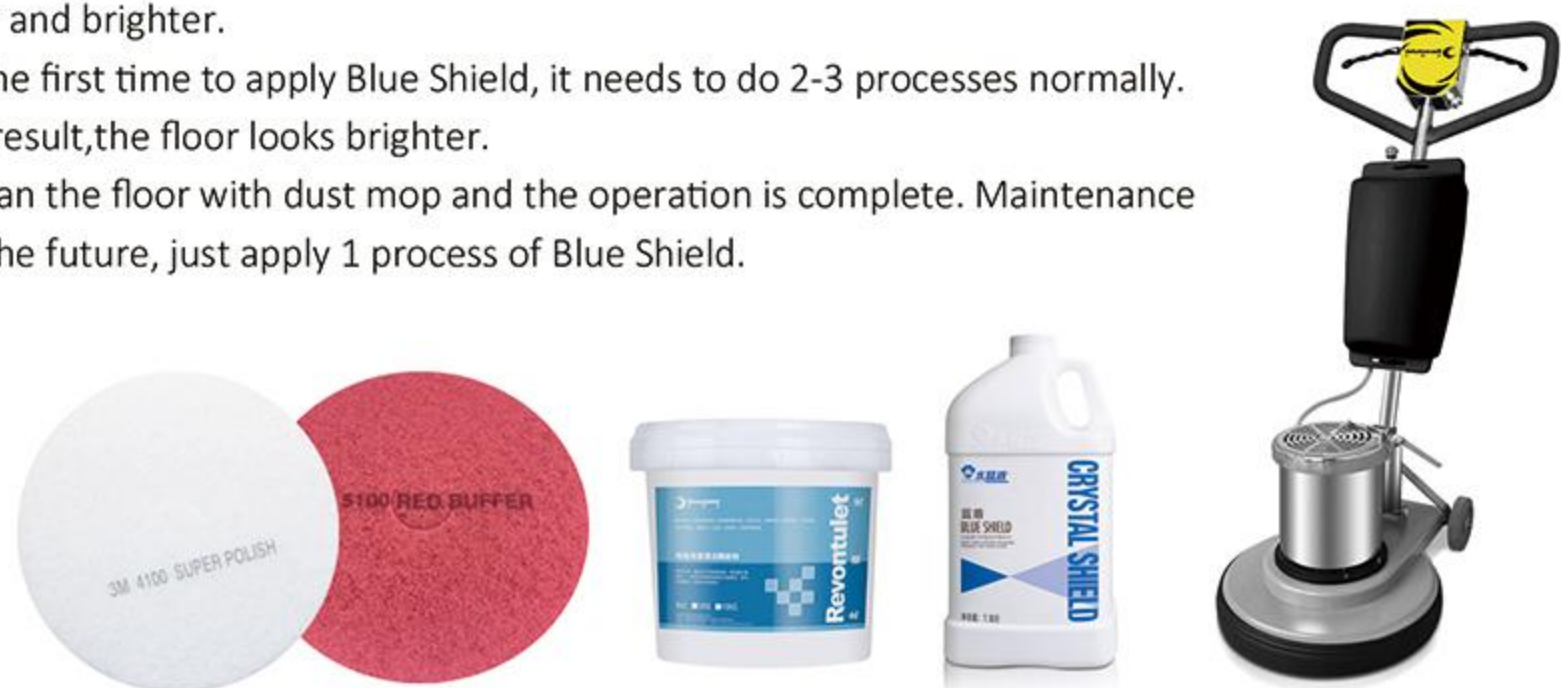
Polished Tile Daily Maintenance And Renovation

Deep cleaning care

The polished tile floor where people often walk will produce shallow scratches and surface fading and pollution caused by mechanical wear, which will lose the high-end decorative effect, especially in the high-end commercial plaza. Deep cleaning and care is necessary.

Method of application:

1. Use Swift deep floor cleaner (weak alkaline cleaning agent, which will not damage the floor) with crystallization machine and red pad to clean the polished tile floor.
2. Then wash the floor thoroughly, absorb and dry it with the full-automatic scrubber.
3. Spray Blue Shield on the floor (5-10ml/m²), cooperate with 3M white pad and crystallization machine.
4. Rub the floor dry evenly, it takes about 1-2 minutes. Which causes to produce strong crystal protective film on the surface at once.
5. Clean up the floor if have dust, repeat step 3 with Blue Shield, which can make the layer of Blue Shield tenser, stronger and brighter.
6. If the first time to apply Blue Shield, it needs to do 2-3 processes normally. As result, the floor looks brighter.
7. Clean the floor with dust mop and the operation is complete. Maintenance in the future, just apply 1 process of Blue Shield.



Serpeggiante Care Solutions

For these problems of soft stone, we have launched "Revontulet dry grinding system" these years, to reduce the use of water on stones with high water absorption. In combination with Stone hardener, it can effectively inhibit efflorescence spreading, help to seal the pores of stones and cover the dark cracks.

It is easy to operate. While grinding, it can deeply clean the stone micropores, form a bright and wear-resistant protective film, and quickly achieve a high-quality project.

Revontulet Dry Grinding System

Method of application:

1. Use 50# dry diamond pad dry grinding the floor (If you want less dust, dilute GT1000 stone grinding fluid with water 13-15 times and wet grinding with 50#).
2. After drying the floor, dry grinding with 100#.
3. Clean up the dust, use flat mop to paint the stone hardener (Apply a thin of layer), after drying, use 200# dry diamond pad dry grinding the floor.
4. Clean up the dust, use flat mop to paint the stone hardener (Apply a thin of layer), after drying, use 400# dry diamond pad dry grinding the floor.
5. Use 800# dry grinding the floor.

Attention:

1. 50# dry diamond pad is available for dry or wet grinding. If wet grinding, please apply with GT1000 stone grinding fluid, the rotate speed is between 350-400 rpm.
2. When painting the stone hardener, pay attention about the dosage, do not paint too much. Grinding the floor after the stone hardener layer become dry. When grinding with 100# and 200#, the rotate speed can adjust to 550rpm. When grinding with 400# and 800#, the rotate speed can adjust to 1500rpm.

Mirror Polishing

1. Clean up the dust
2. Use Green shield with 3M white pad to polish the floor 1 time.
3. Use Green shield with 0# or 1# to polish the floor 1-2 time.

Consumables: Revontulet dry grinding pad, 2 in 1 stone hardener, MR or green shield, Crystallization machine



Enterprise Culture & Services

Enterprise Culture

- **Vision:**
Build a global brand for stone care and create a co-creation platform for cleaning industry.
- **Mission:**
Expert in the fields of floor grinding, polishing, cleaning and care.
Create opportunities for partners, achieve value and dreams!

Our Services

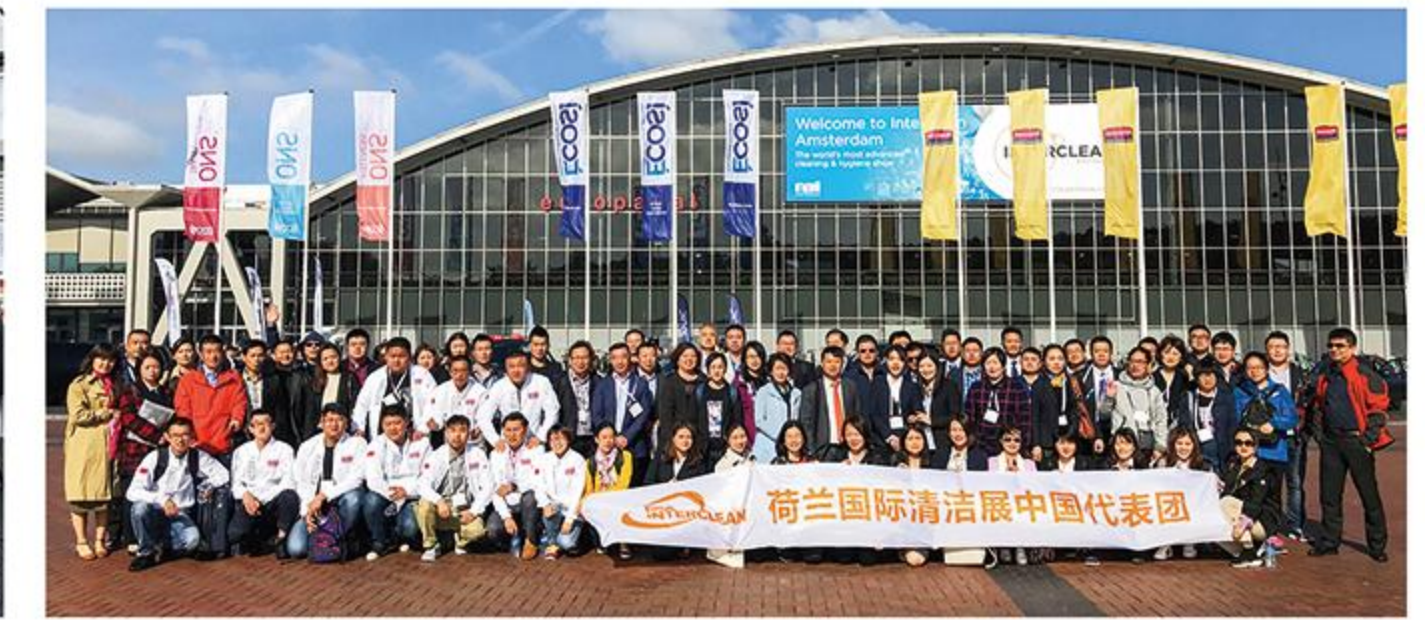
- Stone care Solution
- OEM service (Packing design and so on)
- Product information (Catalogue, Brochure, advertising display materials and so on)
- Training Course
- Technical support (On-site Guidance and demo)

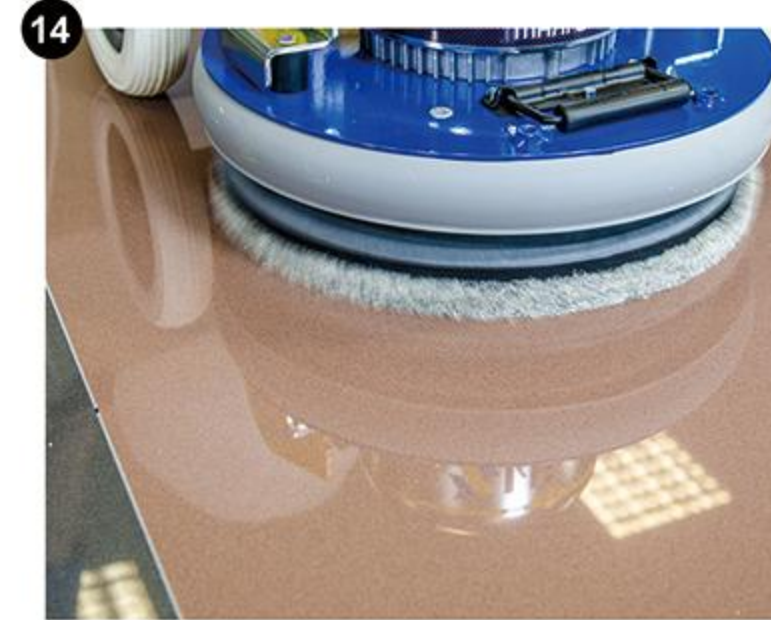


Scan the code to follow



Our Learning Base And Corporate Dynamics





Engineering Project

- 1. Royal beige (marble)
- 2. Beige artificial stone
- 3. Huoshao stone (granite)
- 4. Italian coffee gold (marble)
- 5. Splendor (marble)

- 6. Polished tiles and vitrified tiles
- 7. Moonlight Valley (marble)
- 8. Hermes Grey (marble)
- 9. Jazz White (Marble)
- 10. Concrete (chaotic color)

- 11. Waterproof technology of Türkiye grey (marble)
- 12. Black gold sand (granite)
- 13. Terrazzo stone
- 14. Italian ceramic tiles
- 15. Italian gold ivory (marble)