

大特点 BIG FEATURE

FABRIC IMPORTED 德国进口面料 FROM GERMANY

大自然色彩 / NATURE COLOR

Swela 面料融入了大自然中最纯净的色彩，那抽象艳丽的渐变色，美得让人难以忘怀！

The Swela fabric blends with the purest colors in nature, and the shining bright colors is unforgettable.

遮阳不遮光 / SHADING WITH SKIN CARE

拥有德国最先进的纳米涂层技术，能够完美的过滤紫外线，同时保留了有益的光线，在 Swela 面料下，您能感受到不一样的阳光。

Germany Swela fabric is Benefiting with Germany's most advanced nano-coating technology. It has been able to develop an incomparable colour brilliance and high luminance when exposed to the sun. Make you feel different sunshine.

久不褪色传奇 / NON-FADING LEGEND

特殊的染色工艺，让 Swela 面料拥有着难以想象的保色技术，面对夏威夷的日照，也能保持长达十年的色彩不变。

It is awarded to fabric qualities which do not show any colour fading following weather testing in accordance with the "Blue Wool" measure scale. Sun silk series achieve the Weather fastness (ISO 105 B04) standard.

抗拉伸撕裂 /

TENSILE STRENGTH AND RESISTANCE TO TEAR PROPAGATION

长纱线纤维让 Swela 拥有其他高端面料两倍以上抗撕裂强度，哪怕遇到极端气候也可以从容面对。

By selecting special yarns, Swela fabric has more than twice the tensile strength and resistance to tear propagation of other high-end fabrics, even in extreme weather conditions, it achieve DIN EN ISO 13934-1 and DIN EN ISO 13937-2.

强防水自洁 / WATERPROOF AND SELF-CLEANING

Swela 是为数不多的强自洁面料，出色的疏水性令雨水脱离面料表面，同时把污渍带走。每次下雨都会焕然一新。

Swela is one of the few strong self-cleaning fabrics. The excellent hydrophobicity removes rainwater from the surface of the fabric and removes the stains. So every time it rains, it seems you got a brand new product.

健康环保 / ENVIRONMENTALLY FRIENDLY

swela 符合德国环保认证，可以为室内节省 60% 的制冷用电，也是一种有益于人体健康的优质面料。

Swela is free of pollutants according to the REACH regulations and are therefore harmless to the environment and to people, especially beneficial to the environment and health.



紫外线防护系数

这称为“澳大利亚测试”，我们所有 sun silk 面料都要进行测试。与防晒霜相比，该值表示防晒系数为 80。

这意味着一个人在我们的防晒织物下的时间是正常皮肤的 80 倍。明亮的颜色可阻挡 97% 的太阳光，深色甚至达 100% 保护效果。

希明驰纳米技术

独特的希明驰纳米清洁涂层具有清洁效果，是遮阳罩的完美解决方案。清水可以清除遮阳罩上的环境污染和污垢。

重要事项：在收回遮阳罩之前，应让遮阳面料保持干燥。



PRODUCT DESCRIPTION

品名 / article:	swela-324 "sunsilk SNC"	
织物编织 / fabric weave:	linen weave 1/1	
描述 / description:	plain awning fabric	
材料成分 / material composition:	100% polyester	
图案 / pattern repeat:	-----	
布宽 / width:	approx. 120 cm	
重量 / weight per m²:	approx. 250 g	
布料厚度 / fabric thickness:	approx 0.37 mm (winds up with less volume on the roller) !	
商品编码 / customs tariff number:	54079200	
使用与保养 / recommendations for fabric care	<p>Solling can be rinsed off using a hosepipe (not under high pressure). Clean the fabric on both sides and allow it to dry while the awning is extended. If necessary, sponge down or brush off with a soapy solution suitable for delicate fabrics at no more than 30 C (86 F), avoiding heavy, abrasive movements. Afterwards rinse copiously with clean water and allow the fabric to dry.</p>	
水压 / water column (EN 20811):	>45.0 mbar (>450mm)!	
色牢度 / light fastness (ISO 105/B02):	value: 7-8	(value: 1-8) (8= very good /1= faulty)
耐气候性 / weather fastness (ISO 105/B04):	value: 7-8	(value: 1-8) (8= very good /1=faulty)
耐磨性 / colour resistance to rubbing: (ISO 105/X12)	dry: value 5; wet: value 4-5	(vae:1-5) (5=very good /1= faulty)
耐氯性 / chlorine resistance (EN ISO 105-E03):	value: 4-5	(value: 1-5) (5= very good /1= faulty)
防水性 / water repellency (AATCC-22-1985):	value: 100	(vae:0-100) (100 = very good/0=faulty)
最大拉力 / max. tensile strength (DIN EN ISO 13934-1):	warp: approx. 2200 N (highly tear resistant) ! weft: approx. 1200 N (highly tear resistant) !	
最大延伸率 / max. elongation (DIN EN ISO 13934-1):	warp: approx. 45% weft: approx. 30%	
抗撕裂性 / resistance to tear propagation (DIN EN ISO 13937-2):	warp: approx. 55N weft: approx. 35N	
抗紫外线 / Solar UV protective properties (EN13758-1):	UPF 50+ (excellent sun protection)	
生活紫外线射透 / UVA transmission (EN 13758-1):	<2.0%	
户外紫外线射透 / UVB transmission (EN 13758-1):	<1.0%	

We reserve the right to make technical alterations without giving prior notice, whereby the product suitability remains unchanged.



CARE ABSORBED
A HUNDRED YEARS

百年用心专注

您的要求是我们的动力

您对纺织品有很高要求吗？这很好，因为您对质量和功能的要求促使我们不断改进和检查我们的面料。因此，我们一次又一次成功地将功能、美观与安全的最高要求结合起来。如果有些许不符合您的期望，我们期待听到您的想法和建议。我们的销售代表随时为您解答问题。

- ① 最高质量标准
- ② 灵活的订单量
- ③ 交货期短
- ④ 个性化图案和设计
- ⑤ 国内和国际咨询专业知识
- ⑥ 订单的可靠再现性

德国制造，符合国际标准

我们的高品质产品在威斯特伐利亚州的埃姆斯滕制造，从纱线到现成的面料。这使我们能关注所有的生产步骤，并持续监控和保证我们的质量。

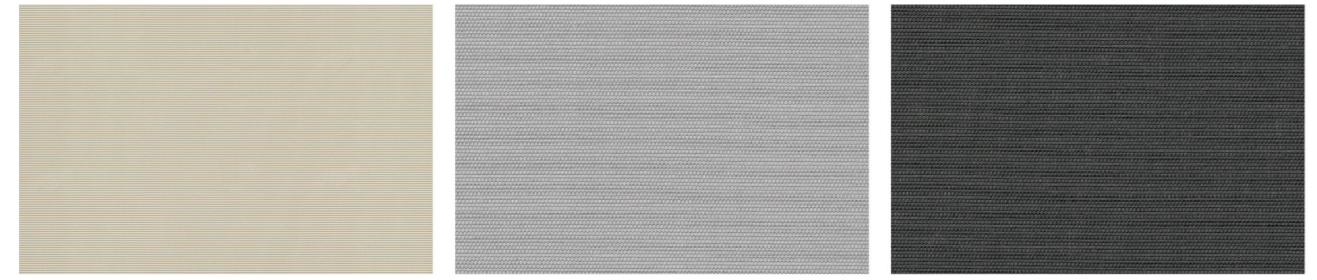
此外，生产深度使我们能够灵活地响应客户的要求，这就是“德国制造”的质量和和服务。



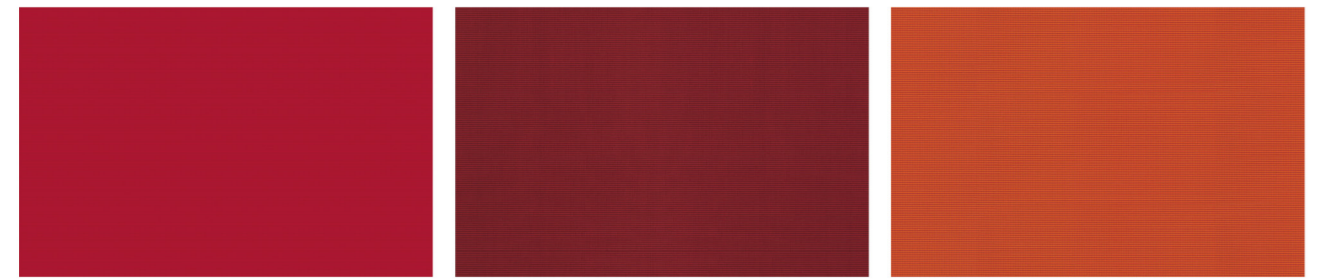
FABRIC IMPORTED
FROM GERMANY



32467 MANDY 32417 MAXIME 32501 HONEY



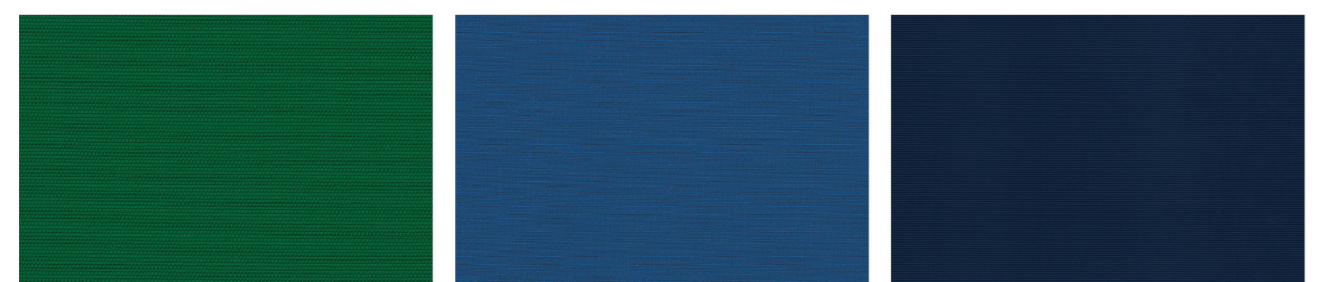
32507 RAFAEL 32414 LENARA 32438 VINCE



32433 PARIS 32513 MAGENTA 32502 FENJA



32437 MATT 32447 TYLER 32506 TRUDY

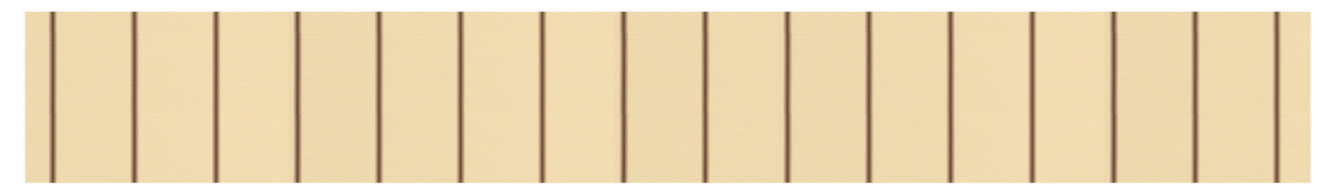


32456 JOSEFA 32475 ELISE 32505 COLLIN

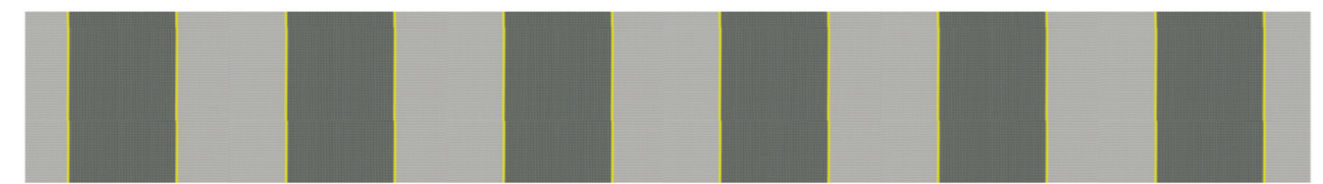
FABRIC IMPORTED
FROM GERMANY 德国进口面料



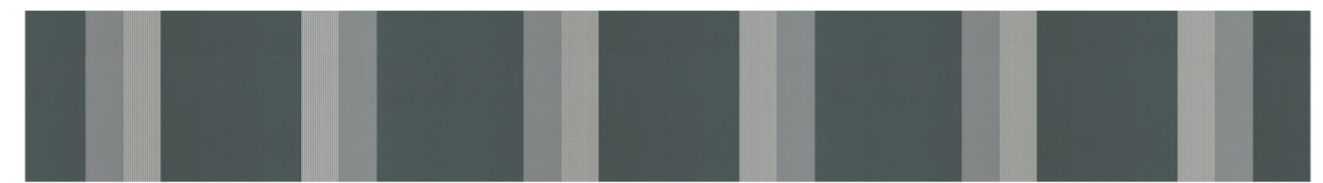
32807 HOLLY



32877 RICARDO



32826 MERCEDES



32808 QUENTIN



32849 MATTEO

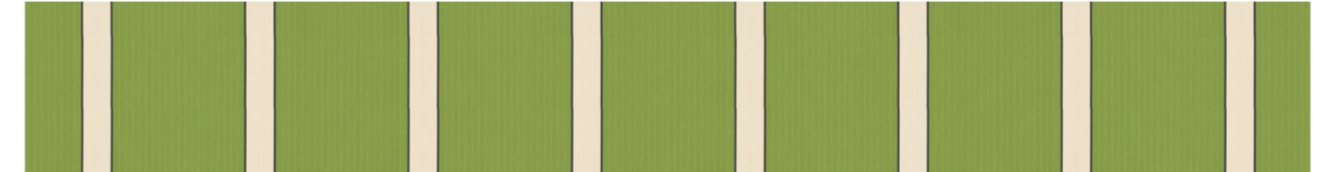


32833 LEILA

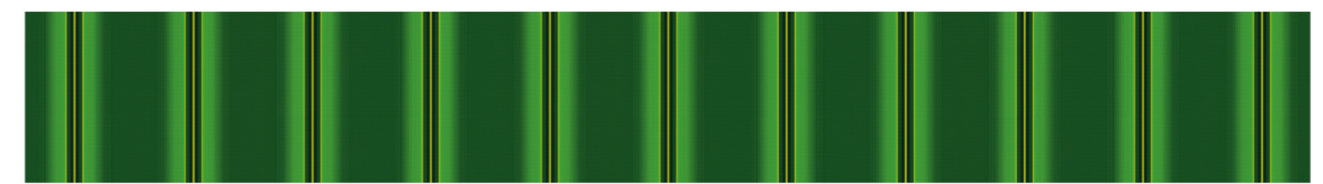


32855 LUKE

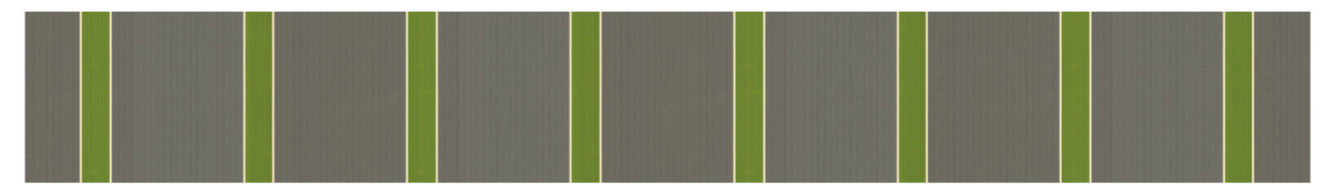
FABRIC IMPORTED
FROM GERMANY 德国进口面料



32846 ERWIN



32836 GINA



32840 GUSTAV



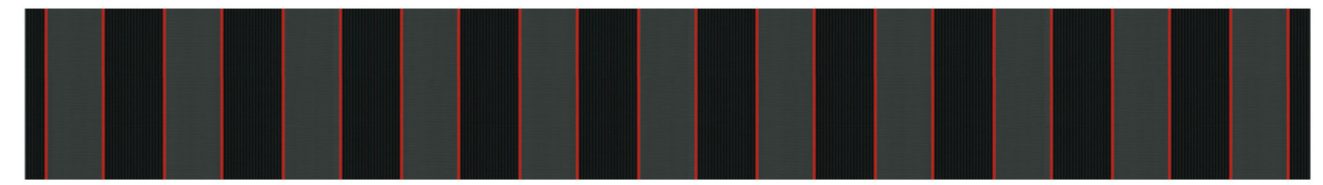
32837 CECILE



32860 ALEN

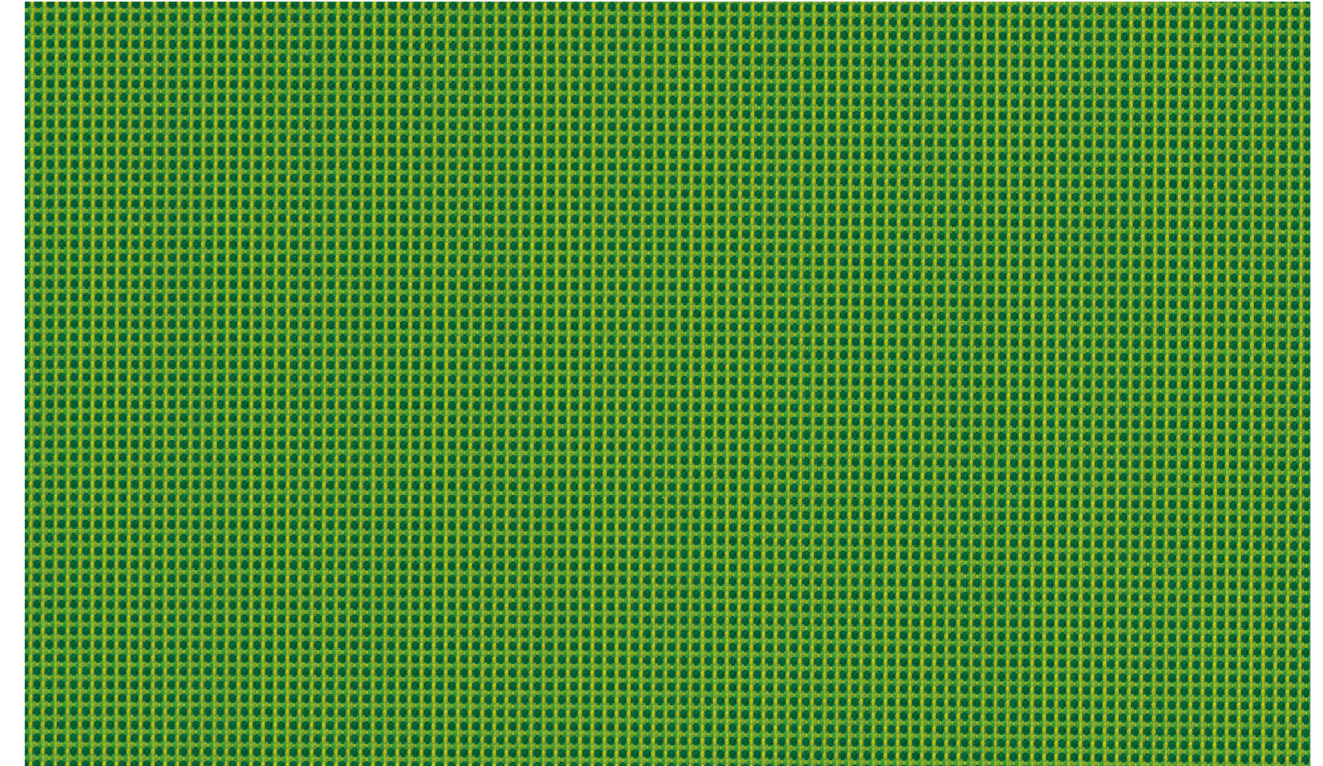


32835 JOEL

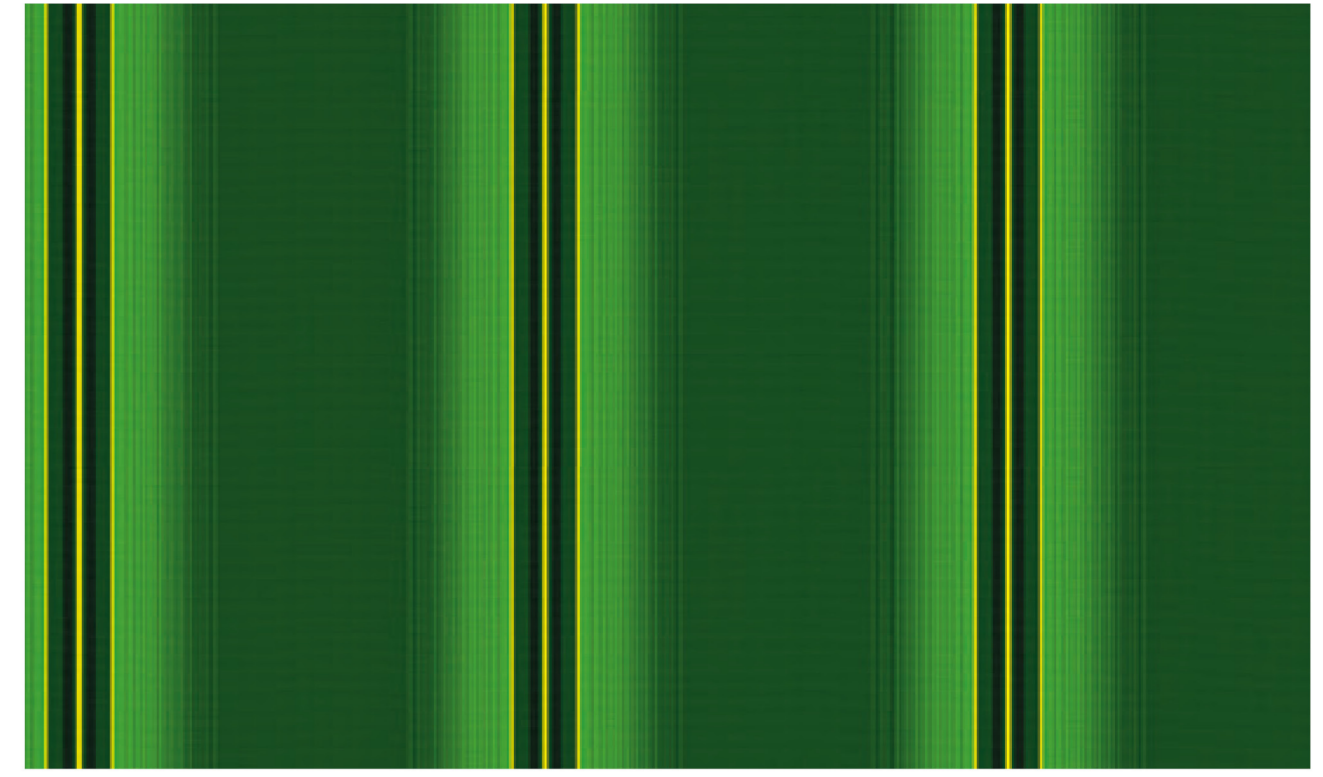


32818 DANGER

FABRIC IMPORTED
FROM GERMANY 德国进口面料



32506 TRUDY



32836 GINA