

# LOIRE®

LOIRE HARDWARE CO., LIMITED  
E-mail: [loire@loire-hardware.com](mailto:loire@loire-hardware.com)  
[Http://www.loire-hardware.com](http://www.loire-hardware.com)

LOIRE®

# LOIRE®

*Glass Door Hardware & Glass Accessories*

CATALOG  
2019SD



Glass Door Hardware.Glass Accessories



2019SD

**LOIRE HARDWARE CO., LIMITED**  
[www.loire-hardware.com](http://www.loire-hardware.com)



## COMPANY PROFILE

Loire Hardware Co., Limited was founded in 2000, located in Guangdong China. We are focus on developing and manufacturing shower hardware, glass door fittings and other glass accessories related. All products are made of Various high-quality material, such as Forged brass, stainless steel, aluminium alloy and zinc alloy with different perfect surface to meet the requirement of various market. Our products are sold worldwide for more than 10 years, 90% of products marked.

Our own brand LOIRE and other OEM brand are mainly exported to Europe & North America market. Today the full set of shower room comes with Loire's own hardware, all accessories preset in the room passed kinds of critical testing thanks to Loire's experience on hardware.

The pursuit of "Excellent quality & Reasonable price" is a religion to Loire forever.

Loire, still Keep Moving towards The Better.

### ► Equipment&processing



## CONTENTS



Glass Door Lock

01-10



Lever Handle

11-12



Glass Door Hinges

13-17



Hydraulic Glass Door Hinges

18-20



Patch Fittings

21-28



Sliding door Series

29-69



Glass connecting Series

70-70



Door Handles

71-76



Handle with lock

77-79



Glass Brackets

80-80



Spider Fittings

81-81



L-3261-A



L-3261-B



L-3261-C



L-3261-D



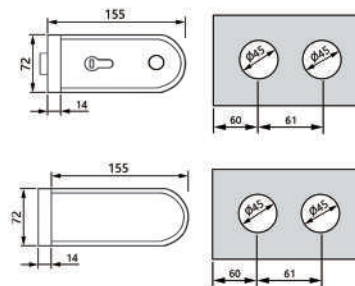
L-3261-E



L-3261-F



L-3261-1



Material: Stainless Steel /Aluminium  
Finish: Polished Stainless Steel (PSS)  
Satin Stainless Steel (SSS)  
Anodizing Aluminium process



L-3262-A



L-3262-B



L-3262-C



L-3262-D



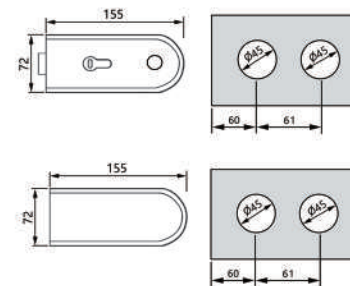
L-3262-E



L-3262-F



L-3262-1



Material: Stainless Steel /Aluminium  
Finish: Polished Stainless Steel (PSS)  
Satin Stainless Steel (SSS)  
Anodizing Aluminium process



L-3263-A



L-3263-B



L-3263-C



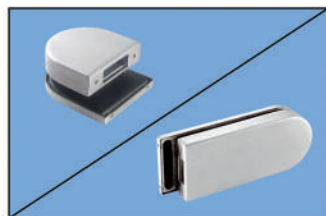
L-3263-D



L-3263-E

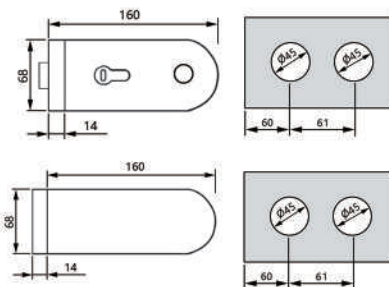


L-3263-F



L-3263-0 L-3263-1

Material: Stainless Steel / Aluminium  
Finish: Polished Stainless Steel (PSS)  
Satin Stainless Steel (SSS)  
Anodizing Aluminium process



L-3264-A



L-3264-B



L-3264-C



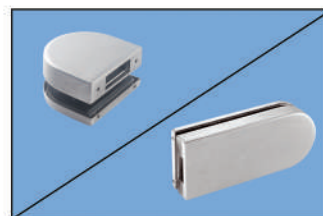
L-3264-D



L-3264-E

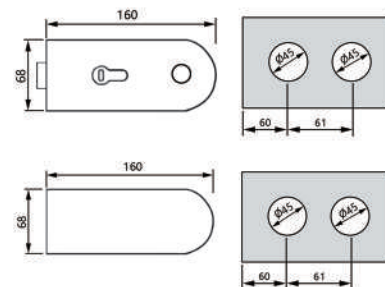


L-3264-F



L-3264-0 L-3264-1

Material: Stainless Steel / Aluminium  
Finish: Polished Stainless Steel (PSS)  
Satin Stainless Steel (SSS)  
Anodizing Aluminium process





L-3265-A



L-3265-B



L-3265-C



L-3265-D



L-3265-E

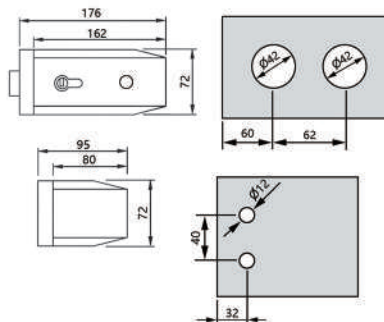


L-3265-F



L-3265-0 L-3265-1

Material: Stainless Steel /Aluminium  
Finish: Polished Stainless Steel (PSS)  
Satin Stainless Steel (SSS)  
Anodizing Aluminium process



L-3266-A



L-3266-B



L-3266-C



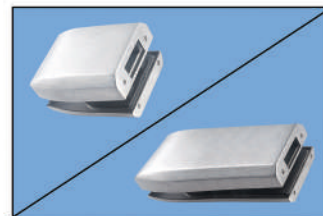
L-3266-D



L-3266-E

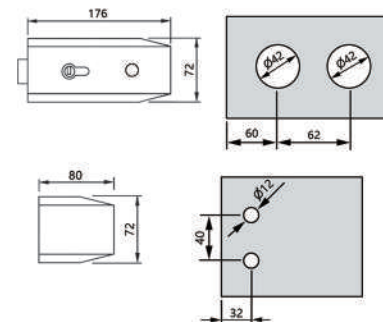


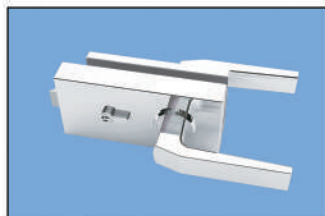
L-3266-F



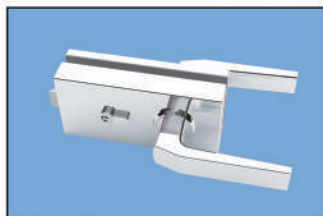
L-3266-0 L-3266-1

Material: Stainless Steel /Aluminium  
Finish: Polished Stainless Steel (PSS)  
Satin Stainless Steel (SSS)  
Anodizing Aluminium process





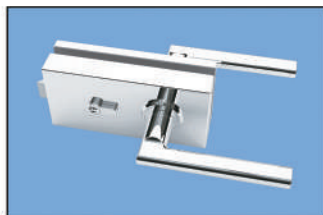
L-3267-G



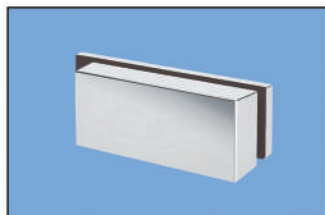
L-3268-G



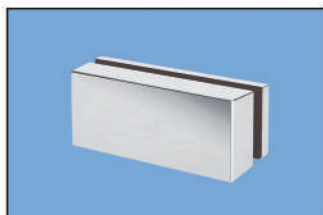
L-3267-H



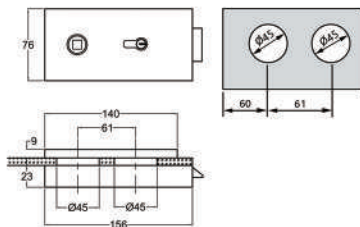
L-3268-H



L-3267-1



L-3268-1



Material: Stainless Steel /Aluminium  
Finish: Polished Stainless Steel (PSS)  
Satin Stainless Steel (SSS)  
Anodizing Aluminium process



L-3269-G



L-3270-G



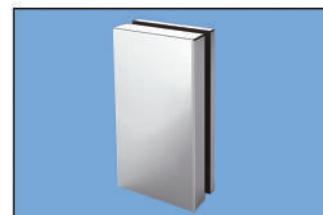
L-3269-H



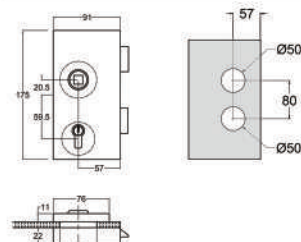
L-3270-H



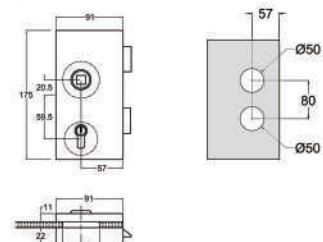
L-3269-1



L-3270-1

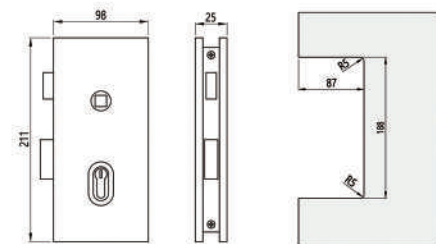


Material: Stainless Steel /Aluminium  
Finish: Polished Stainless Steel (PSS)  
Satin Stainless Steel (SSS)  
Anodizing Aluminium process





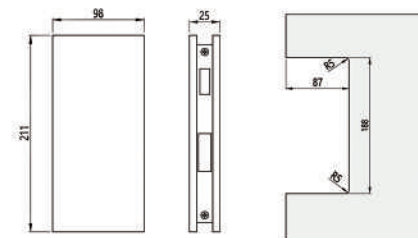
L-3271-0



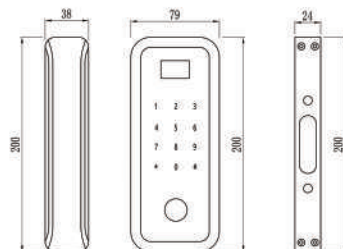
Material: Stainless Steel  
Finish: Polished Stainless Steel (PSS)  
Satin Stainless Steel (SSS)



L-3271-1



L-3272-0



For glass thickness: 10-12mm (No need cut-out)  
Standard cover plate: plastic/metal  
Finish: Black/Silvery/Gold

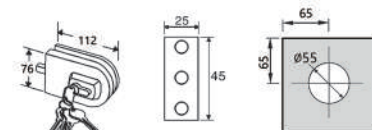
- \* fingerprint grouping management, adding, deleting and clearing
- \* identifying hacking and copying of fingerprint images and films and defending malicious decryption
- \* three modes of opening: fingerprint, password and IC card
- \* all-open modes



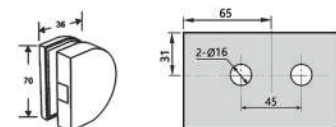
L-3272-1



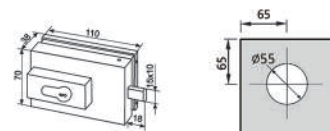
L-3245



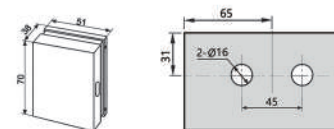
L-3245A



L-3225



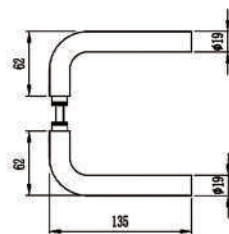
L-3225A



Material: Stainless Steel  
Finish: Polished Stainless Steel (PSS)  
Satin Stainless Steel (SSS)



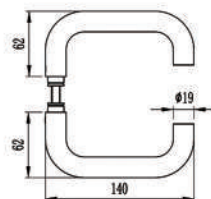
LH-A



Material: Stainless Steel /Aluminium  
Finish: Polished Stainless Steel (PSS)  
Satin Stainless Steel (SSS)  
Anodizing Aluminium process



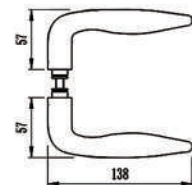
LH-B



Material: Stainless Steel /Aluminium  
Finish: Polished Stainless Steel (PSS)  
Satin Stainless Steel (SSS)  
Anodizing Aluminium process



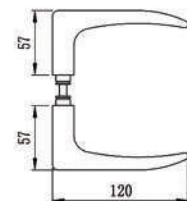
LH-C



Material: Stainless Steel /Aluminium  
Finish: Polished Stainless Steel (PSS)  
Satin Stainless Steel (SSS)  
Anodizing Aluminium process



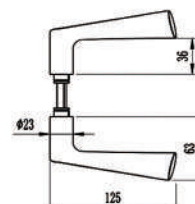
LH-D



Material: Stainless Steel /Aluminium  
Finish: Polished Stainless Steel (PSS)  
Satin Stainless Steel (SSS)  
Anodizing Aluminium process



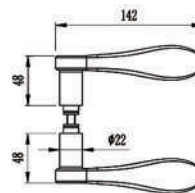
LH-E



Material: Stainless Steel /Aluminium  
Finish: Polished Stainless Steel (PSS)  
Satin Stainless Steel (SSS)  
Anodizing Aluminium process



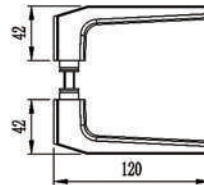
LH-F



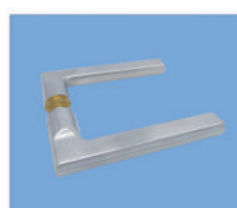
Material: Stainless Steel /Aluminium  
Finish: Polished Stainless Steel (PSS)  
Satin Stainless Steel (SSS)  
Anodizing Aluminium process



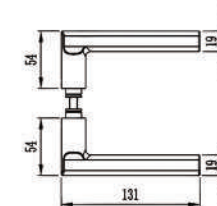
LH-G



Material: Stainless Steel /Aluminium  
Finish: Polished Stainless Steel (PSS)  
Satin Stainless Steel (SSS)  
Anodizing Aluminium process



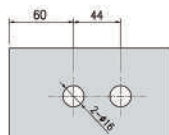
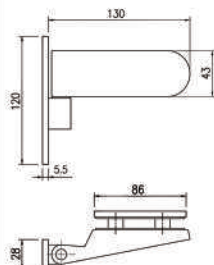
LH-H



Material: Stainless Steel /Aluminium  
Finish: Polished Stainless Steel (PSS)  
Satin Stainless Steel (SSS)  
Anodizing Aluminium process



L- 3201

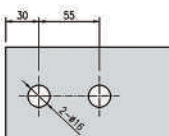
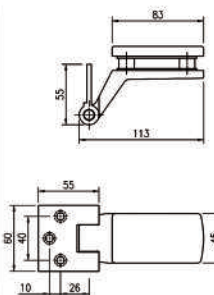


Glass cut- out top and bottom

MATERIAL: Stainless Steel  
FINISH: Polished Stainless Steel (PSS)  
Satin Stainless Steel (SSS)  
Titanium Plated (TI)



L- 3202

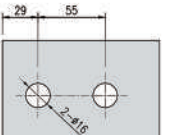
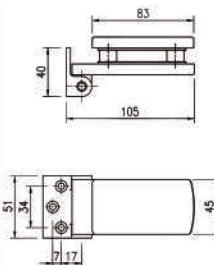


Glass cut- out top and bottom

MATERIAL: Brass  
FINISH: Bright Chrome Plated (CP)  
Satin Chrome Plated (SCP)  
Brushed Nickel (BN)



L- 3203



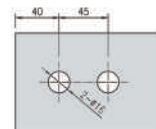
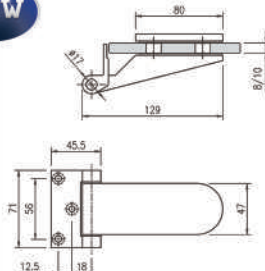
Glass cut- out top and bottom

MATERIAL: Brass  
FINISH: Bright Chrome Plated (CP)  
Satin Chrome Plated (SCP)  
Brushed Nickel (BN)



L- 3210

NEW



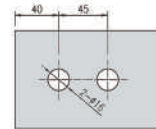
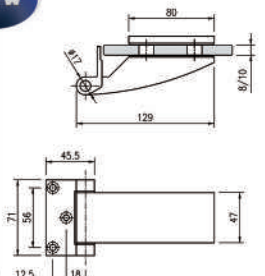
Glass cut- out top and bottom

MATERIAL: Aluminium  
FINISH: Bright Chrome Plated (CP)  
Satin Chrome Plated (SCP)  
Brushed Nickel (BN)



L- 3211

NEW



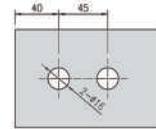
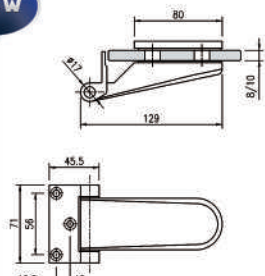
Glass cut- out top and bottom

MATERIAL: Aluminium  
FINISH: Bright Chrome Plated (CP)  
Satin Chrome Plated (SCP)  
Brushed Nickel (BN)



L- 3212

NEW



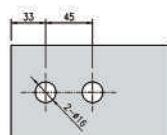
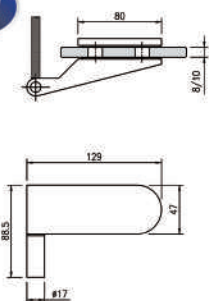
Glass cut- out top and bottom

MATERIAL: Aluminium  
FINISH: Bright Chrome Plated (CP)  
Satin Chrome Plated (SCP)  
Brushed Nickel (BN)



L-3210A

NEW



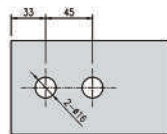
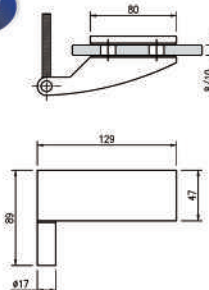
Glass cut-out top and bottom

MATERIAL: Aluminium  
FINISH: Bright Chrome Plated (CP)  
Satin Chrome Plated (SCP)  
Brushed Nickel (BN)



L-3211A

NEW



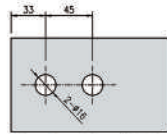
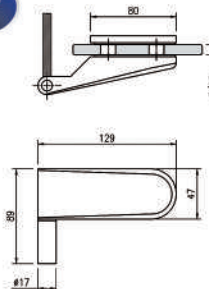
Glass cut-out top and bottom

MATERIAL: Aluminium  
FINISH: Bright Chrome Plated (CP)  
Satin Chrome Plated (SCP)  
Brushed Nickel (BN)



L-3212A

NEW

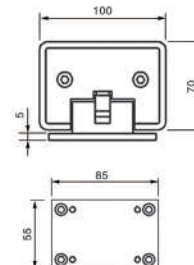


Glass cut-out top and bottom

MATERIAL: Aluminium  
FINISH: Bright Chrome Plated (CP)  
Satin Chrome Plated (SCP)  
Brushed Nickel (BN)



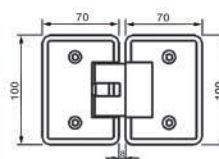
L-3204



Double action spring  
return door from 70°  
in each direction  
MATERIAL: Brass  
FINISH: Bright Chrome Plated (CP)  
Satin Chrome Plated (SCP)  
Brushed Nickel (BN)



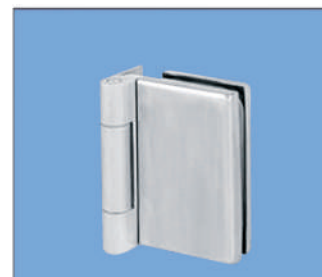
L-3204T



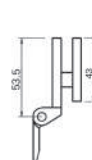
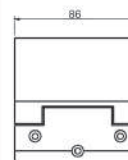
L-3204T L-3204T

Glass cut-out top and bottom

MATERIAL: Brass  
FINISH: Bright Chrome Plated (CP)  
Satin Chrome Plated (SCP)  
Brushed Nickel (BN)



L-3205

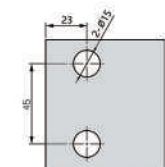
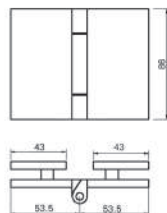


Glass cut-out top and bottom

MATERIAL: Aluminium  
FINISH: Bright Chrome Plated (CP)  
Satin Chrome Plated (SCP)  
Brushed Nickel (BN)



L-3206

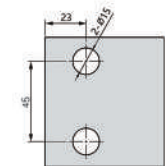
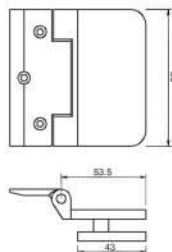


Glass cut- out top and bottom

**MATERIAL:** Aluminium  
**FINISH:** Bright Chrome Plated (CP)  
Satin Chrome Plated (SCP)  
Brushed Nickel (BN)



L-3207

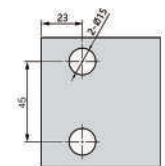
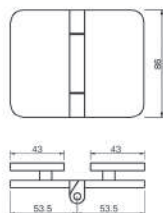


Glass cut- out top and bottom

**MATERIAL:** Aluminium  
**FINISH:** Bright Chrome Plated (CP)  
Satin Chrome Plated (SCP)  
Brushed Nickel (BN)



L-3208



Glass cut- out top and bottom

**MATERIAL:** Aluminium  
**FINISH:** Bright Chrome Plated (CP)  
Satin Chrome Plated (SCP)  
Brushed Nickel (BN)



L-3209

**SPECIFICATIONS:**

**Glass Thickness Range:**  
3/8" to 1/2" (10 to 12 mm)

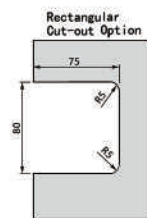
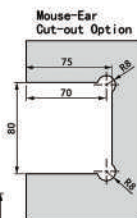
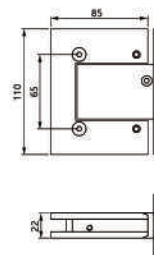
**Construction:** Brass / Aluminium

**Hinge Swings:**

90 Degrees Inwards and Outwards

**Closing Type:**

Automatic Closing From 0 to 80 Degrees



Swings in and out a full 90 degrees, with stops at 0°, +90°, and -90°. Closing speed can be adjusted. For doors up to 39" (1 m) wide. Maximum weight per two hinges is 60 kg.



J-3209T

**SPECIFICATIONS:**

**Glass Thickness Range:**  
3/8" to 1/2" (10 to 12 mm)

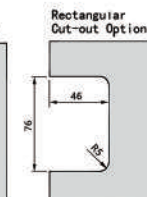
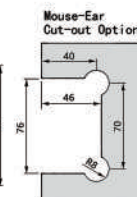
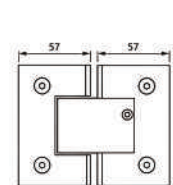
**Construction:** Brass / Aluminium

**Hinge Swings:**

90 Degrees Inwards and Outwards

**Closing Type:**

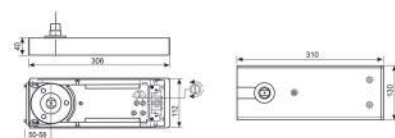
Automatic Closing From 0 to 80 Degrees



Swings in and out a full 90 degrees, with stops at 0°, +90°, and -90°. Closing speed can be adjusted. For doors up to 39" (1 m) wide. Maximum weight per two hinges is 60 kg.

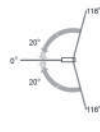


L-1084

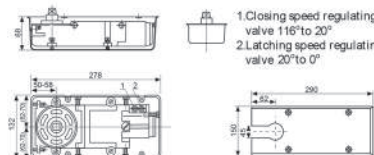


Hold-open at 90° (either direction)  
Max. opening angle 116°  
Door weights up to 105kg  
Suitable for doors up to 1100 mm wide  
Two controlled closing speed ranges  
Standard Cover Plate: Stainless Steel

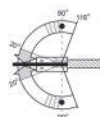
Finish: Polished Stainless Steel (PSS)  
Satin Stainless Steel (SSS)  
Titanium Plated (TI)



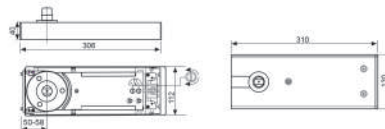
L-1085



1. Closing speed regulating valve 116° to 20°  
2. Latching speed regulating valve 20° to 0°

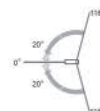


1. Fully controlled closing action with speed adjustment for the ranges 116° to 20° and 20° to 0° (either direction)  
2. Mechanical backcheck (from approx. 80°)  
3. Hold open at 90°



Hold-open at 90° (either direction)  
Max. opening angle 116°  
Door weights up to 110kg  
Suitable for doors up to 1150 mm wide  
Two controlled closing speed ranges  
Standard cover plate: Stainless Steel

Finish: Polished Stainless Steel (PSS)  
Satin Stainless Steel (SSS)  
Titanium Plated (TI)



L-1065



L-1088A

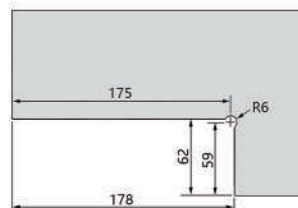
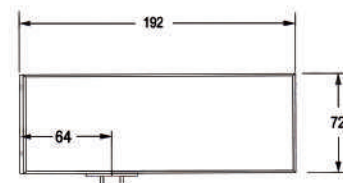
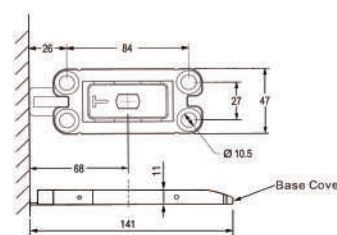
NEW



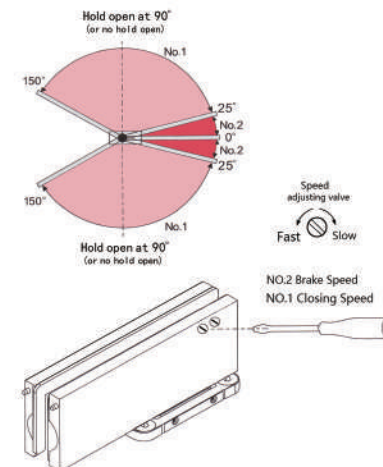
L-1088

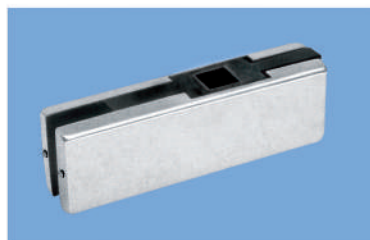
NEW

90° Hold open  
Suitable for 8 - 12mm thick glass door  
Maximum doorweight: S-(60kg); M-(80kg); L-(100kg)  
Maximum door width: S-(800mm); M-(950mm); L-(1200mm)  
Closing range (85° to 25°); and latching range (25° to 0°)  
Available finish: Satin stainless steel (SSS)  
Polished stainless steel (PSS)

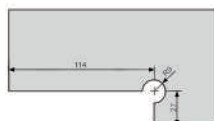


Glass cut-out

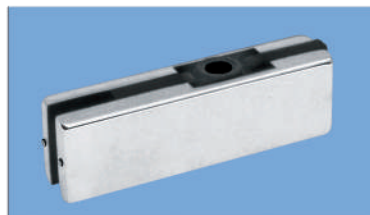




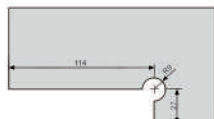
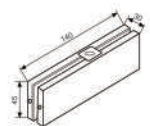
L- 1311



Glass cut- out top and bottom



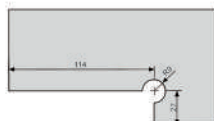
L- 1312



Glass cut- out top and bottom



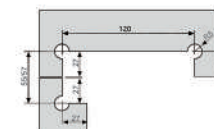
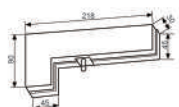
L- 1313



Glass cut- out top and bottom

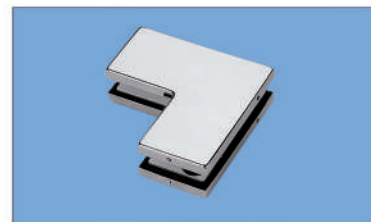


L- 1314

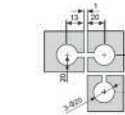
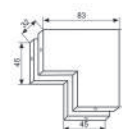


Glass cut- out top and bottom

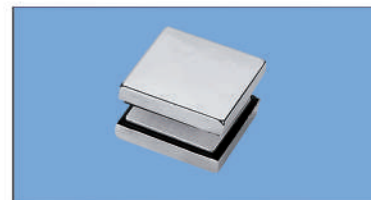
Material: Aluminium Alloy    Standard cover plate: Stainless Steel  
Finish: Polished Stainless Steel (PSS)    Satin Stainless Steel (SSS)



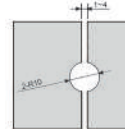
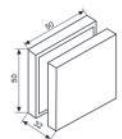
L- 1314A



Glass cut- out top and bottom



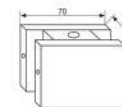
L- 1314B



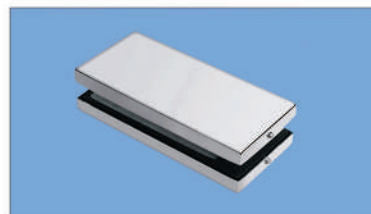
Glass cut- out top and bottom



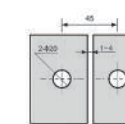
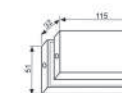
L- 1314C



Glass cut- out top and bottom



L- 1314D

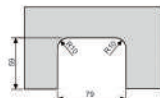
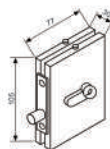


Glass cut- out top and bottom

Material: Aluminium Alloy    Standard cover plate: Stainless Steel  
Finish: Polished Stainless Steel (PSS)    Satin Stainless Steel (SSS)



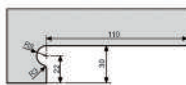
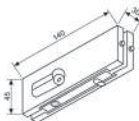
L- 1315



Glass cut- out top and bottom



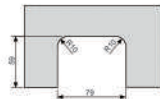
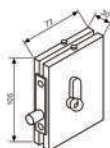
L- 1315B



Glass cut- out top and bottom



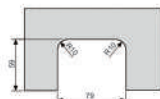
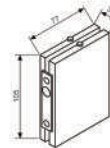
L- 1316



Glass cut- out top and bottom



L- 1317

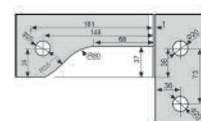
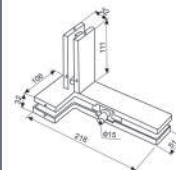


Glass cut- out top and bottom

Material: Aluminium Alloy    Standard cover plate: Stainless Steel  
Finish: Polished Stainless Steel (PSS)    Satin Stainless Steel (SSS)



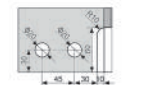
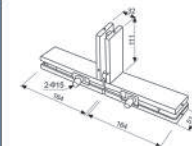
L- 1318R/ L



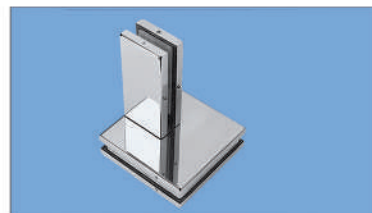
Glass cut- out top and bottom



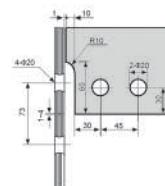
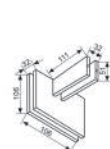
L- 1319



Glass cut- out top and bottom



L- 1320



Glass cut- out top and bottom

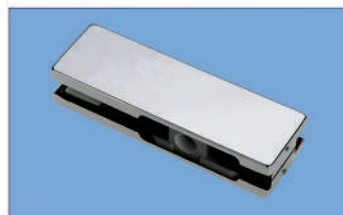


L- 1321

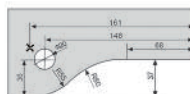
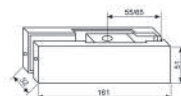


Glass cut- out top and bottom

Material: Aluminium Alloy    Standard cover plate: Stainless Steel  
Finish: Polished Stainless Steel (PSS)    Satin Stainless Steel (SSS)



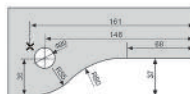
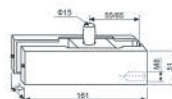
L- 1322



Glass cut- out top and bottom



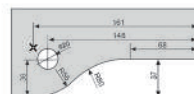
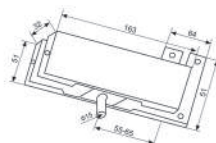
L- 1323



Glass cut- out top and bottom



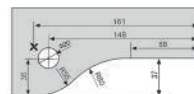
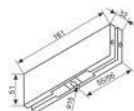
L- 1323A



Glass cut- out top and bottom



L- 1323B

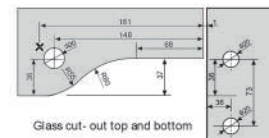
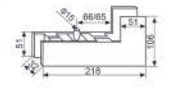


Glass cut- out top and bottom

Material: Aluminium Alloy    Standard cover plate: Stainless Steel  
Finish: Polished Stainless Steel (PSS)    Satin Stainless Steel (SSS)



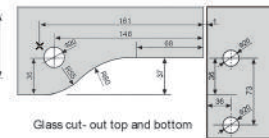
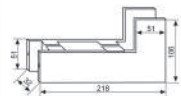
L- 1324



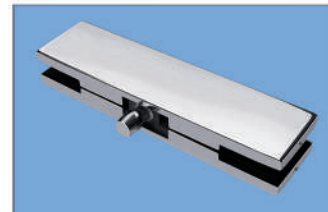
Glass cut- out top and bottom



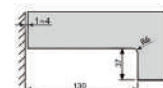
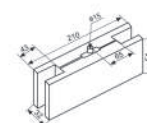
L- 1324A



Glass cut- out top and bottom



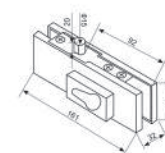
L- 1324B



Glass cut- out top and bottom



L- 1325

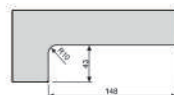
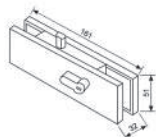


Glass cut- out top and bottom

Material: Aluminium Alloy    Standard cover plate: Stainless Steel  
Finish: Polished Stainless Steel (PSS)    Satin Stainless Steel (SSS)



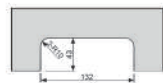
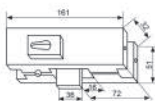
L- 1325B



Glass cut- out top and bottom



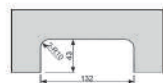
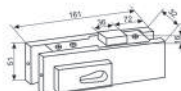
L- 1326



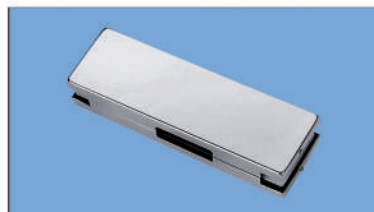
Glass cut- out top and bottom



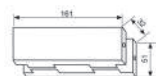
L- 1326A



Glass cut- out top and bottom

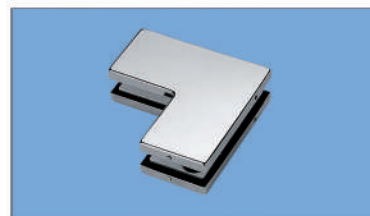


L- 1327

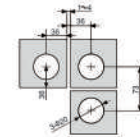
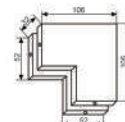


Glass cut- out top and bottom

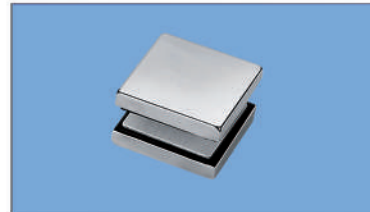
Material: Aluminium Alloy    Standard cover plate: Stainless Steel  
Finish: Polished Stainless Steel (PSS)    Satin Stainless Steel (SSS)



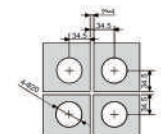
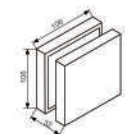
L- 1328



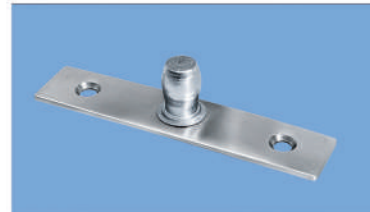
Glass cut- out top and bottom



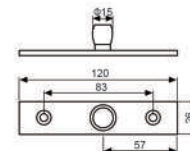
L- 1329



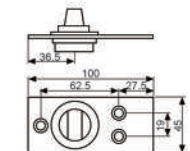
Glass cut- out top and bottom



L- 1301



L- 1302

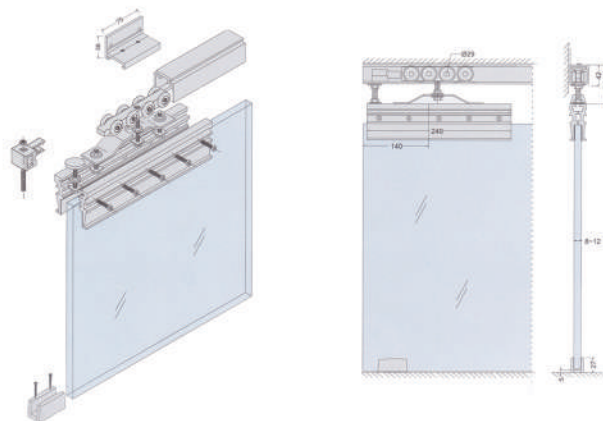


Material: Aluminium Alloy    Standard cover plate: Stainless Steel  
Finish: Polished Stainless Steel (PSS)    Satin Stainless Steel (SSS)

L- 2002



L- 2002- 1  
The glass maximum weight 150kg



- 1.put the threaded rod into hanging roller;
- 2.Place hanging roller into track and fix the nylon butt, then let the hanging roller in ideal position;
- 3.Connect the up stopper and hanging fitting to the glass clip;
- 4.Tighten the glass and glass clip with 5 pcs screws;
- 5.Insert the threaded rod into the hole in hanging fitting, tighten the nut through spanner;
- 6.Make the door straight, then adjust the up stopper till it exactly touch the hanging track;
- 7.Install the bottom stopper in proper position;
- 8.Push and pull the door,make sure the stallation is applicable;

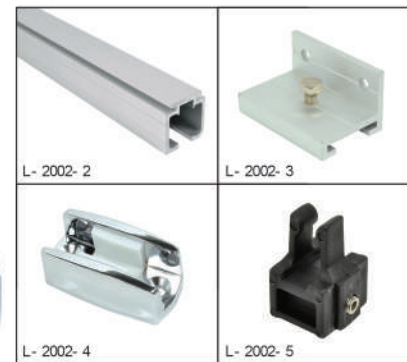
- 1.Glass door size:Max wide:1200mm,  
Max high:2400mm;
- 2.Max.loading capacity:130KGS.
- 3.Glass thickness:8mm,10mm,12mm.
- 4.No cut, no drilling holes.
- 5.Anti-jumping device.

Material: Aluminium Profile  
Finish:Bright Chrome Plated(CP)  
Brushed Nickel(BN)

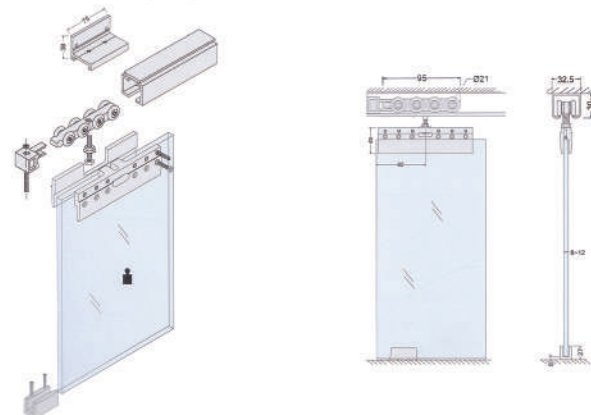
L- 2003



L- 2003- 1  
The glass maximum weight 150kg



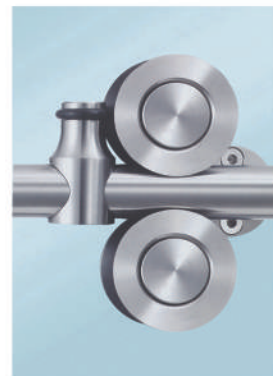
L- 2003- 2  
The glass maximum weight 120kg



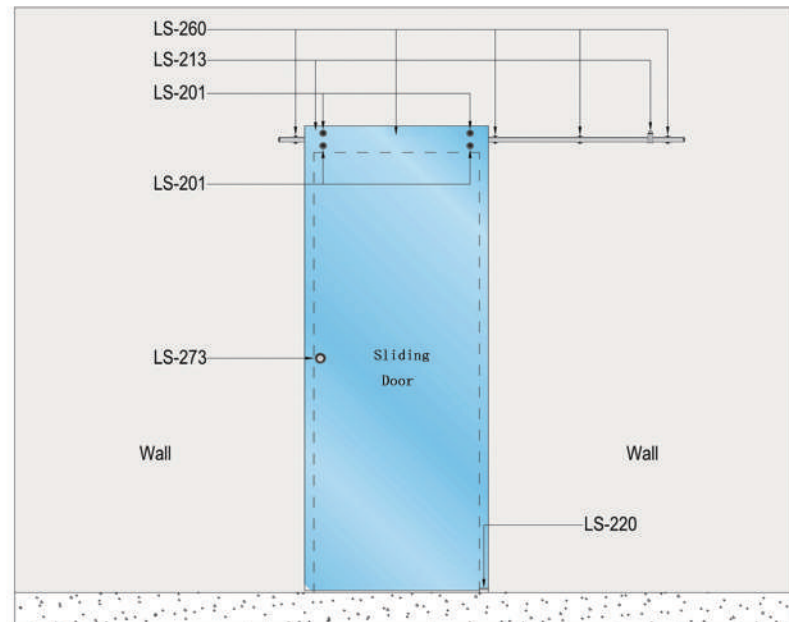
- 1.put the threaded rod into hanging roller;
- 2.Place hanging roller into track and fix the nylon butt, then let the hanging roller in ideal position;
- 3.Connect the up stopper and hanging fitting to the glass clip;
- 4.Tighten the glass and glass clip with 5 pcs screws;
- 5.Insert the threaded rod into the hole in hanging fitting, tighten the nut through spanner;
- 6.Make the door straight, then adjust the up stopper till it exactly touch the hanging track;
- 7.Install the bottom stopper in proper position;
- 8.Push and pull the door,make sure the stallation is applicable;

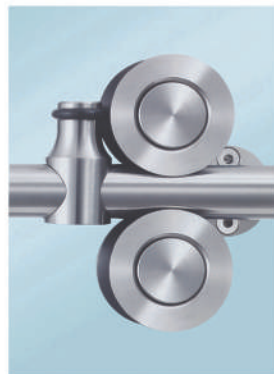
- 1.Glass door size:Max wide:1200mm,  
Max high:2400mm;
- 2.Max.loading capacity:130KGS.
- 3.Glass thickness:8mm,10mm,12mm.
- 4.No cut, no drilling holes.
- 5.Anti-jumping device.

Material: Aluminium Profile  
Finish:Bright Chrome Plated(CP)  
Brushed Nickel(BN)

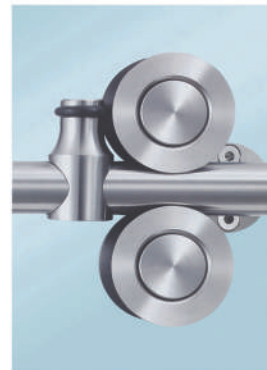
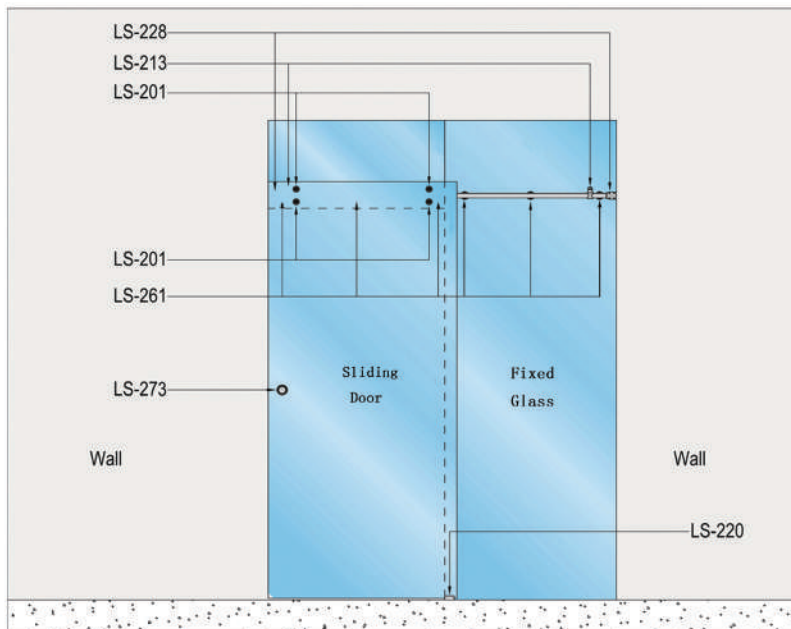


L-2005 one sliding glass

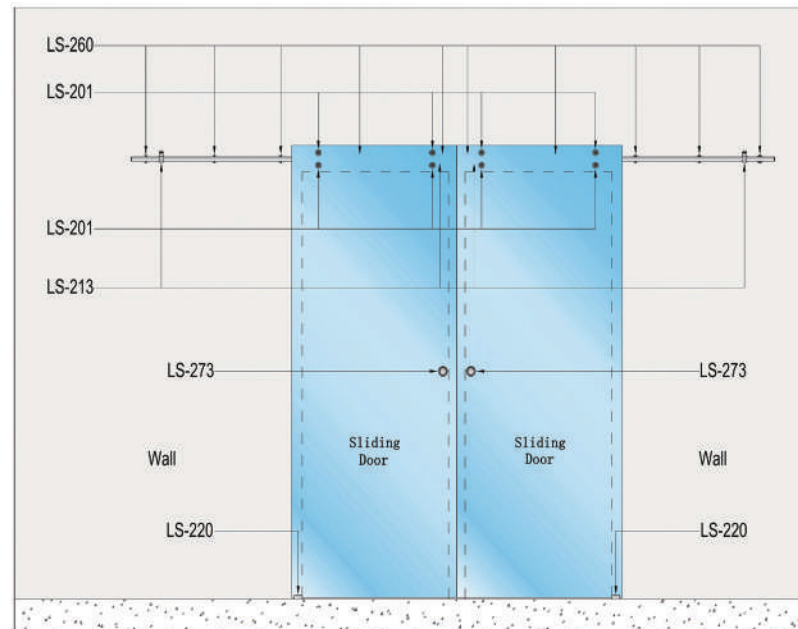




L-2005 one sliding glass, one fixed glass

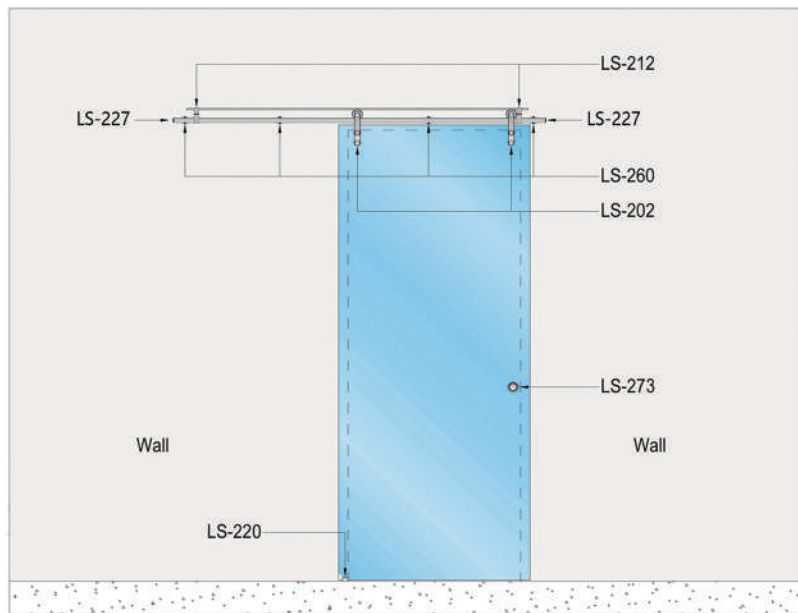


L-2005 two sliding glass





L-2006 one sliding glass





L-2006 one sliding glass, one fixed glass



LS-202 (4pcs)



LS-212 (4pcs)



LS-220 (2pcs)



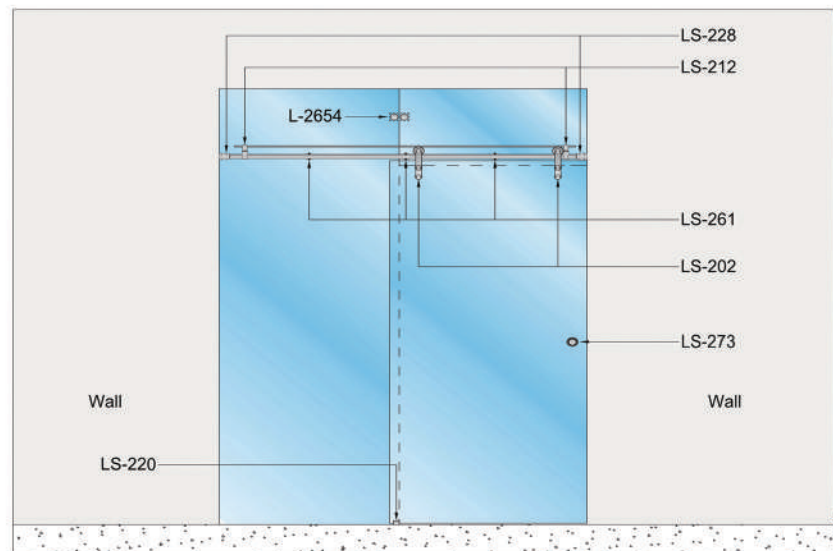
LS-255 (10pcs)



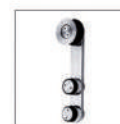
LS-273 (2pcs)



LS-227 (2pcs)

LS-232 (2pcs)  
Ø25 tubeLS-233 (2pcs)  
Ø8 solid tube

L-2006 two sliding glass



LS-202 (4pcs)



LS-212 (4pcs)



LS-220 (2pcs)



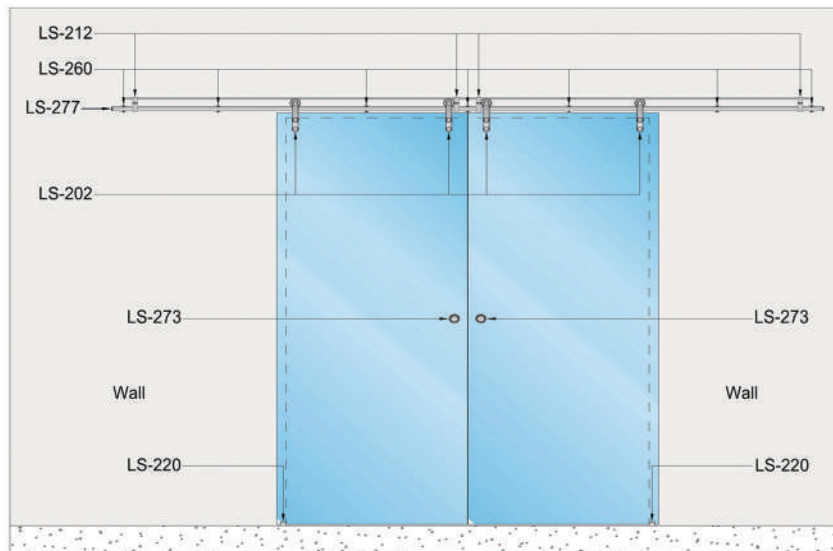
LS-255 (10pcs)

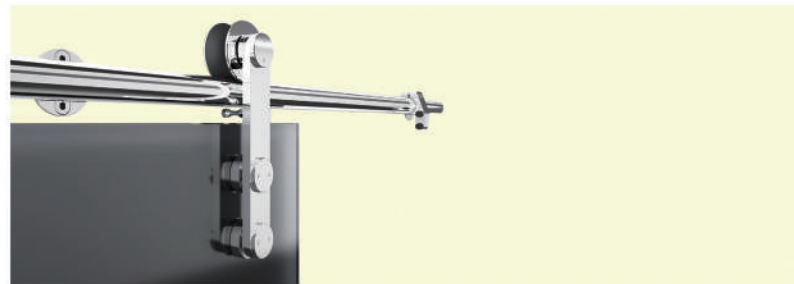


LS-273 (2pcs)

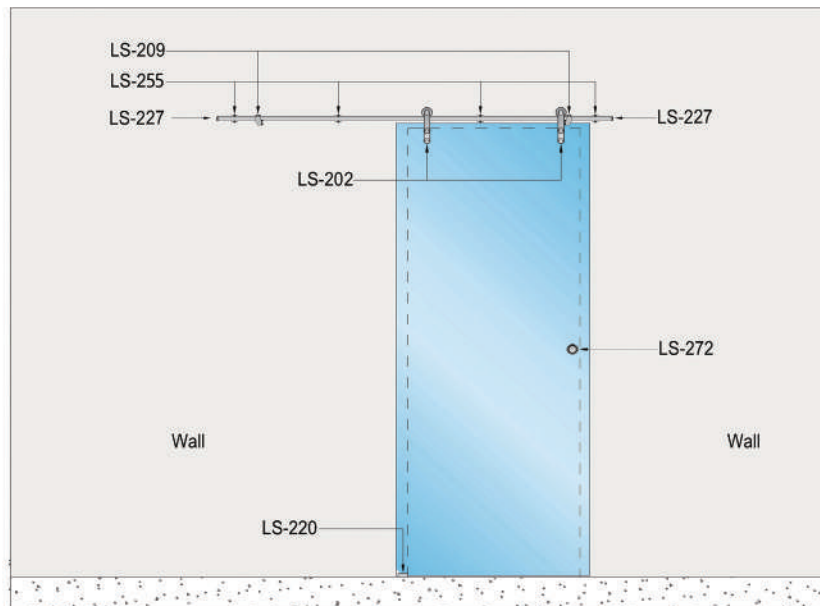


LS-227 (2pcs)

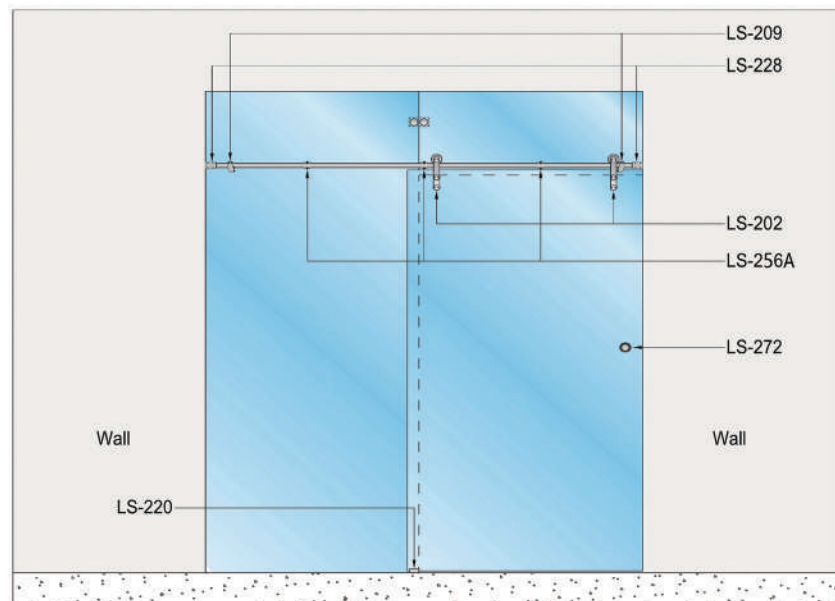
LS-232 (2pcs)  
Ø25 tubeLS-233 (2pcs)  
Ø8 solid tube



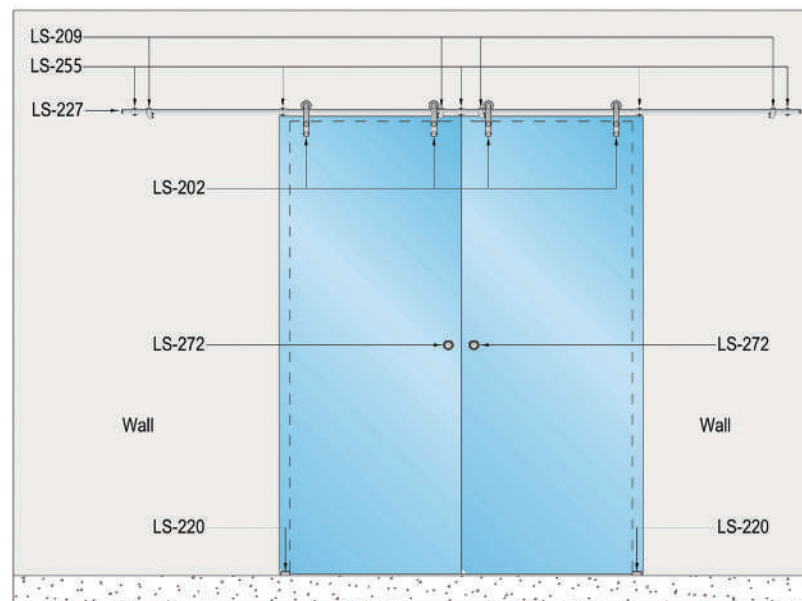
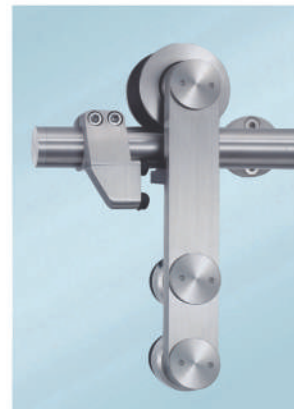
L-2007 one sliding glass



L-2007 one sliding glass, one fixed glass

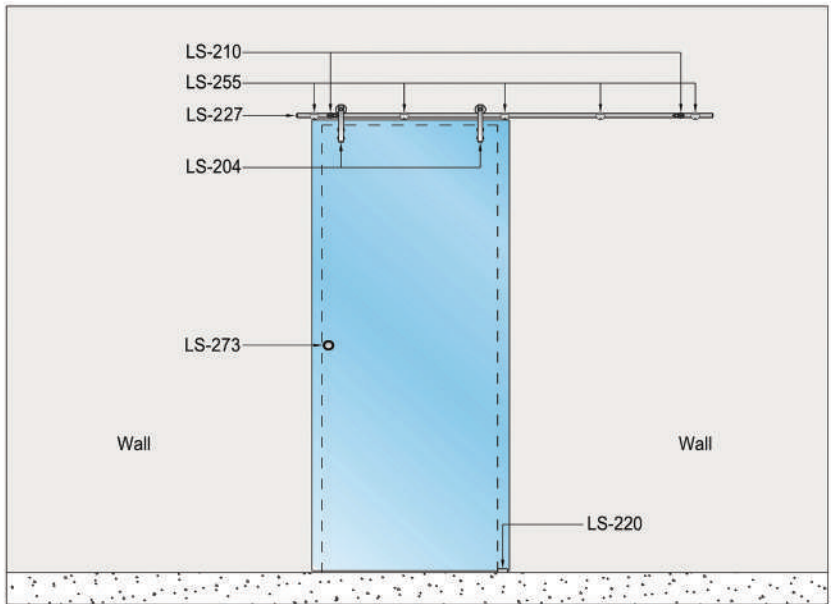


L-2007 two sliding glass



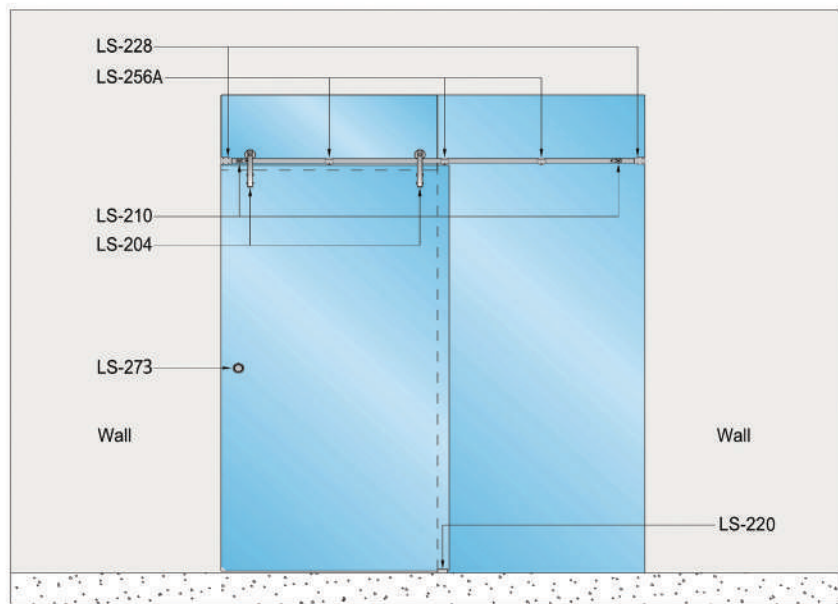


L-2008 one sliding glass

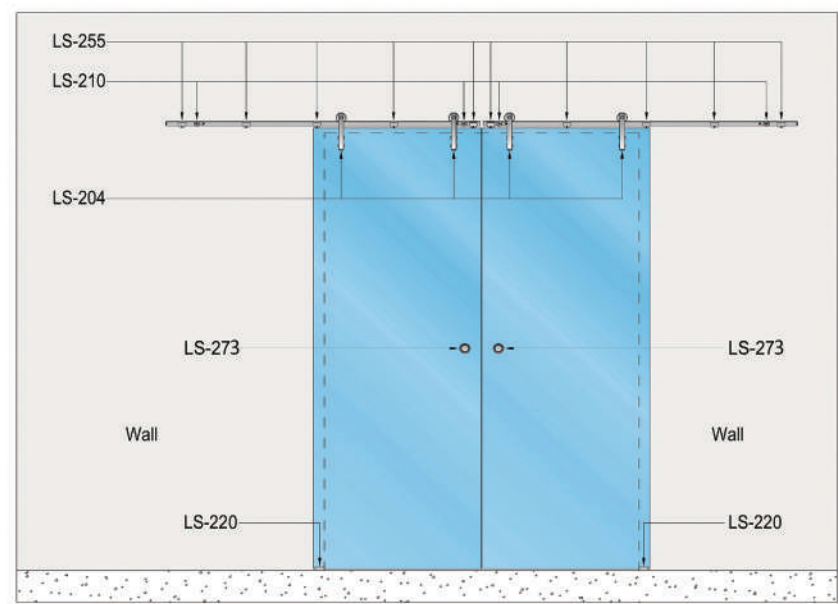




L-2008 one sliding glass, one fixed glass

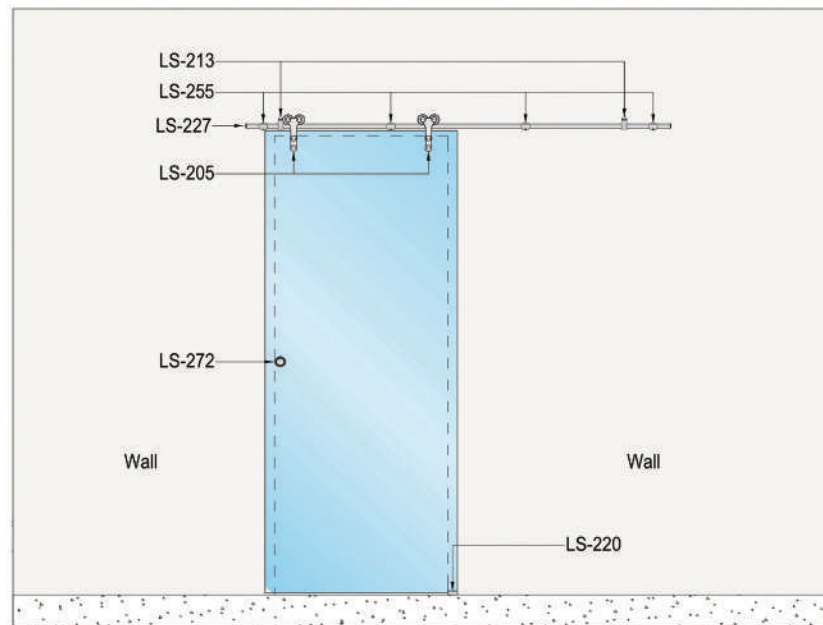


L-2008 two sliding glass



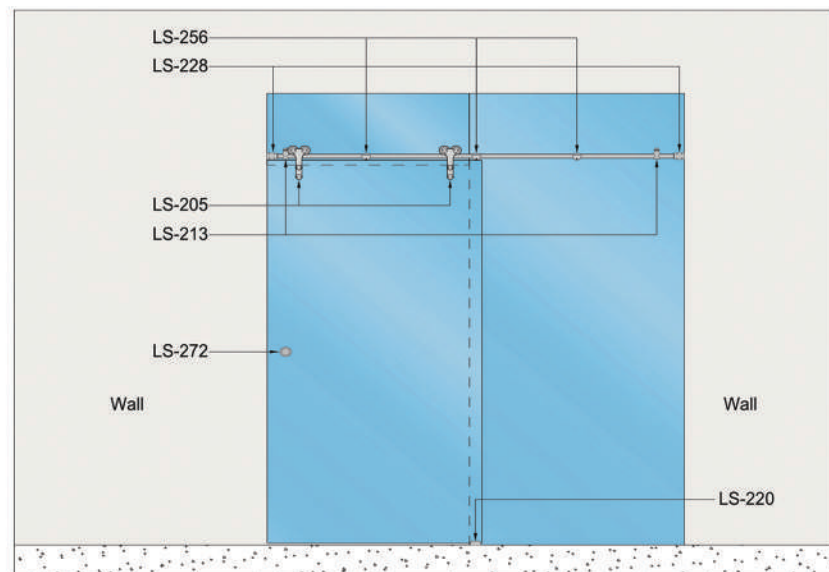


L-2009 one sliding glass

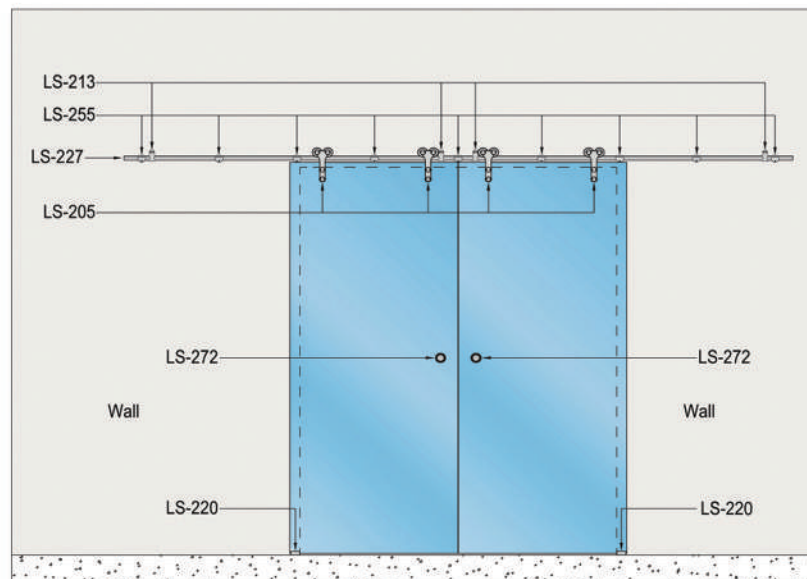


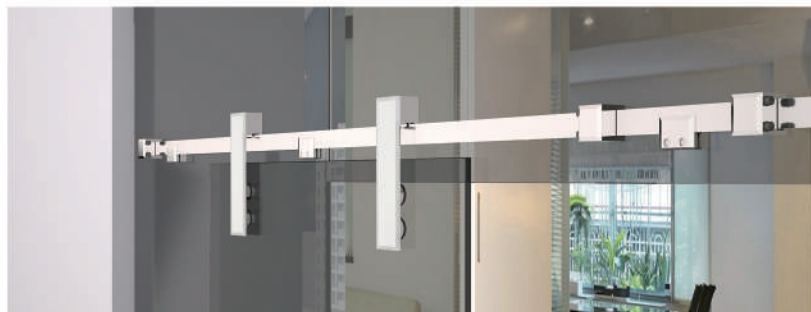


L-2009 one sliding glass, one fixed glass



L-2009 two sliding glass





L-2010 one sliding glass



LS-206 (2pcs)



LS-265 (2pcs)



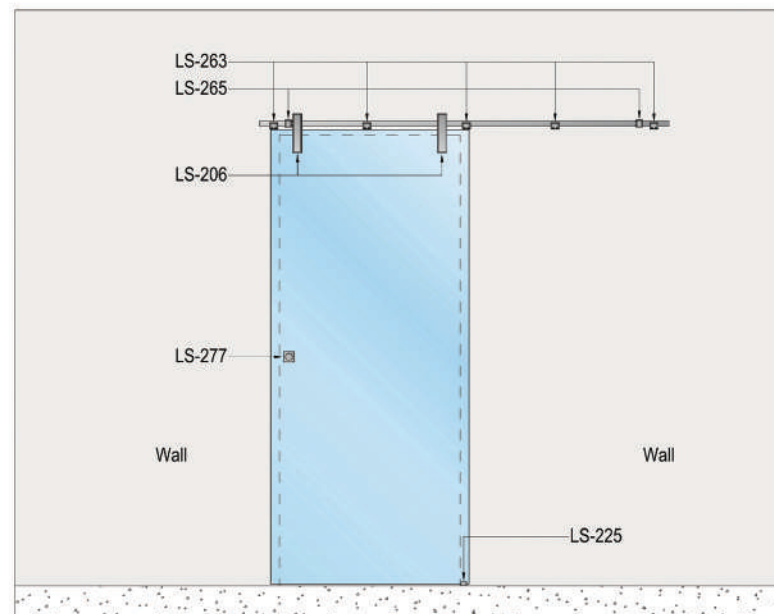
LS-263 (5pcs)



LS-225 (1pcs)

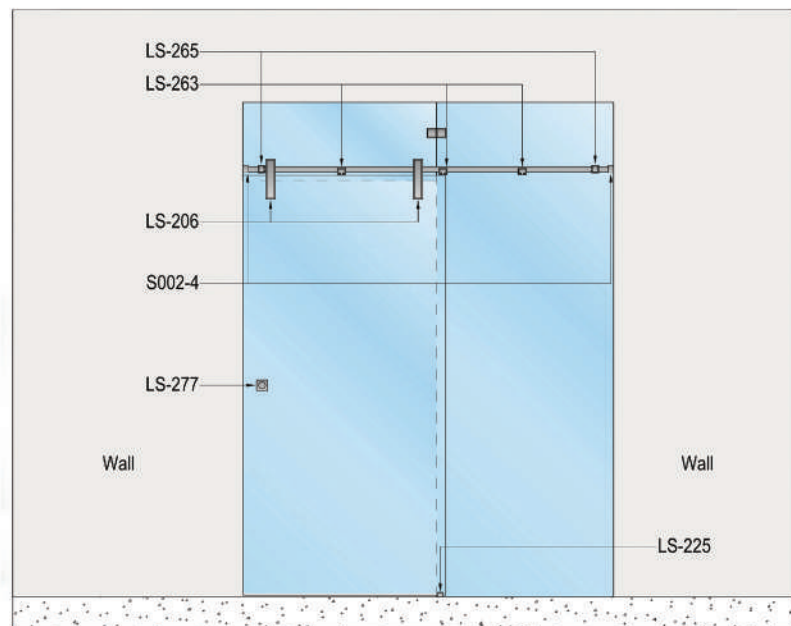
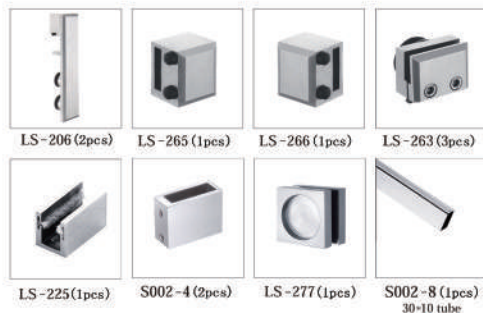


LS-277 (1pcs)

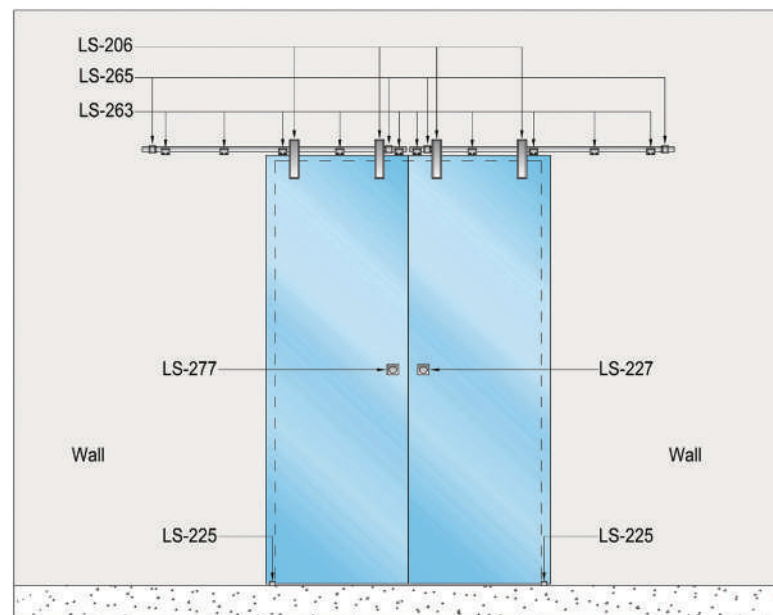
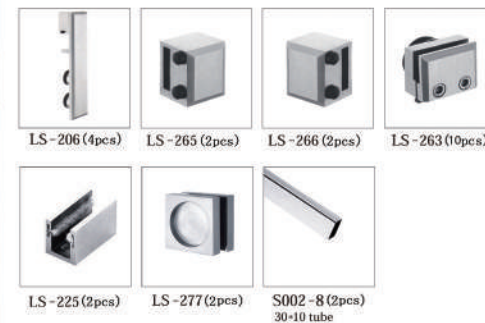
S002-8 (1pcs)  
30\*10 tube



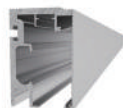
L-2010 one sliding glass, one fixed glass



L-2010 two sliding glass



L-2011


**NEW**

 Aluminium sliding track  
L-2011-00

 Roller  
L-2011-01

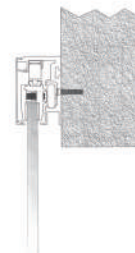
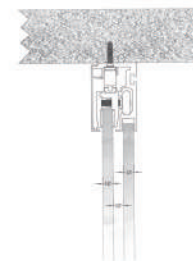
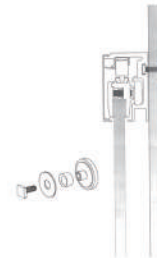
 Damper  
L-2011-02

 Glass Mount Clamp  
L-2011-03

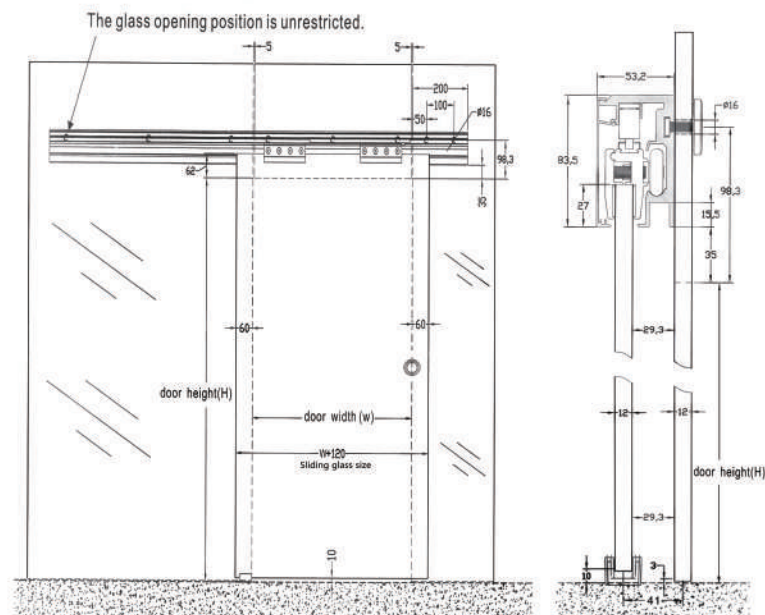
 Knob  
L-2011-04

 Guide  
two sizes  
L-2011-05

 End cap  
L-2011-06

 Stopper  
L-2011-07

 Mode 1: Installed on the side  
of the doorway

 Mode 2: Installed under the  
doorway or ceiling


Mode 3: Installed on the glass





NEW



Aluminium sliding track  
L-2012-00



Roller  
L-2012-01



Bracket  
L-2012-02



Stopper  
L-2012-03



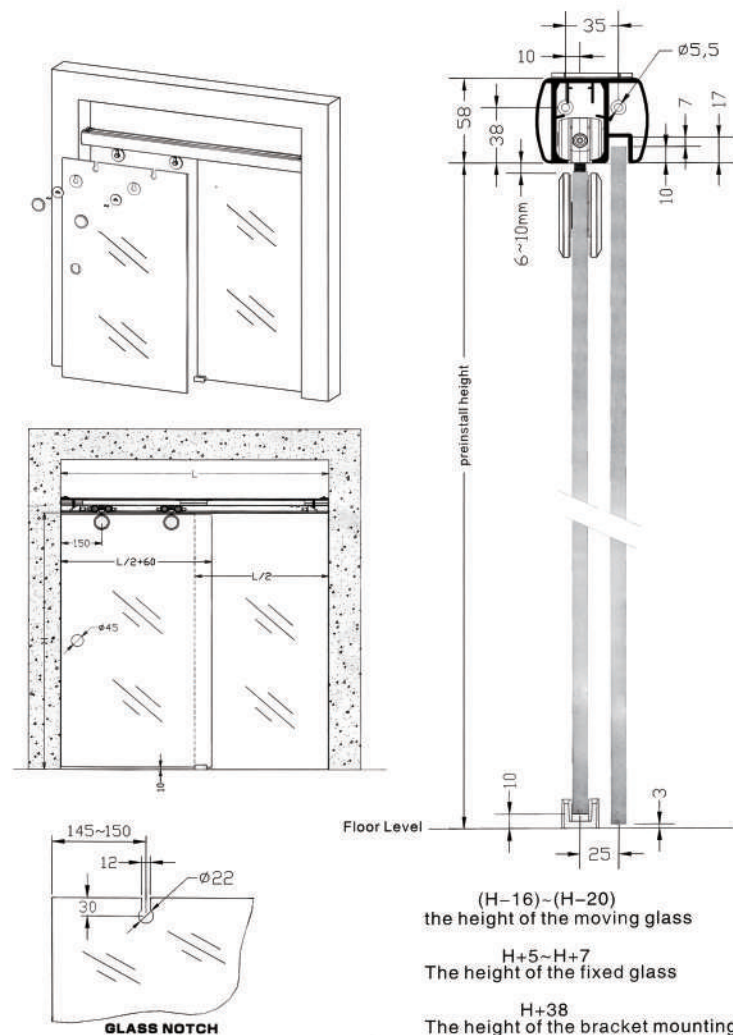
Damper  
L-2011-02



Knob  
L-2011-04



Guide  
two sizes  
L-2011-05

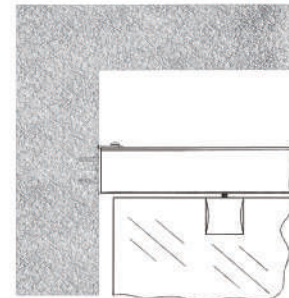




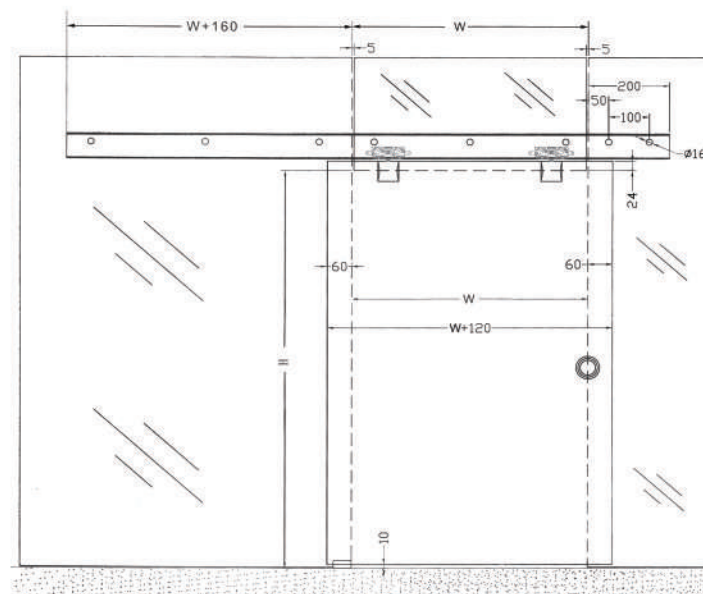
Mode 1: Installed on the side  
of the doorway



Mode 2: Installed under the  
doorway or ceiling



Mode 3: Installed on the side  
of the doorway



The length of the guide rail =  $2W + 360$

LS-201  
Glass hanging wheel



The glass maximum weight 120kg

LS-202  
Glass hanging wheel



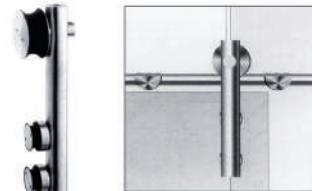
The glass maximum weight 150kg

LS-203  
Glass hanging wheel



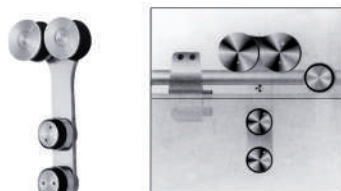
The glass maximum weight 150kg

LS-204  
Glass hanging wheel



The glass maximum weight 150kg

LS-205  
Glass hanging wheel



The glass maximum weight 300kg

LS-206  
Glass hanging wheel



The glass maximum weight 150kg

Material: Stainless Steel  
Finish: Polished Stainless Steel (PSS)  
Satin Stainless Steel (SSS)

LS-208  
Localizer



LS-209  
Localizer



LS-210  
Localizer



LS-211  
Localizer



LS-212  
Localizer



LS-213  
Localizer



LS-214  
Localizer



LS-215  
Localizer



LS-216  
Localizer



LS-217  
Localizer



Material: Stainless Steel  
Finish: Polished Stainless Steel (PSS)  
Satin Stainless Steel (SSS)

LS-218



Material: Nylon  
Adjustable floor guide 6-12mm

LS-219



Material: Stainless Steel 304  
Finish: PSS/SSS  
Adjustable floor guide 8-10mm

LS-220



Material: Stainless Steel 304  
Finish: PSS/SSS  
Adjustable floor guide 6-12mm

LS-221



Material: Stainless Steel 304  
Finish: PSS/SSS  
Adjustable floor guide 6-12mm

LS-222



Format	W1	W2
LS-222-1	10.5	10
LS-222-2	10.5	8
LS-222-3	8.5	8

Material: Stainless Steel 304  
Finish: PSS/SSS  
End panel and floor guide with brush seals

LS-223



Format	W1	W2
LS-223-1	10.5	10
LS-223-2	10.5	8
LS-223-3	8.5	8

Material: Stainless Steel 304  
Finish: PSS/SSS  
End panel and floor guide with brush seals

LS-224



Format	W1	W2
LS-224-1	8.5	15
LS-224-2	10.5	17
LS-224-3	12.5	19

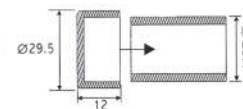
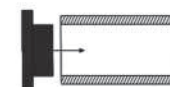
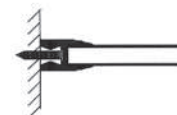
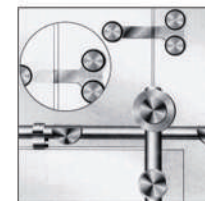
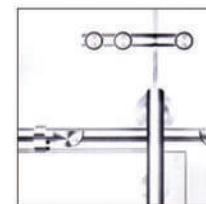
Material: Stainless Steel 304  
Finish: PSS/SSS  
Floor guide with brush seals

LS-225



Format	W1	W2
LS-225-1	8.5	17
LS-225-2	10.5	19
LS-225-3	12.5	21

Material: Stainless Steel 304  
Finish: PSS/SSS  
Floor guide with rubber pads

LS-226  
EndpieceLS-227  
EndpieceLS-228  
Sliding sleeveLS-229  
Fixed fittingsLS-230  
T-type fittingsLS-231  
Fixed fittingsLS-232  
Ø25 tubeLS-233  
Ø8 solid tube

Material: Stainless Steel  
Finish: Polished Stainless Steel (PSS)  
Satin Stainless Steel (SSS)



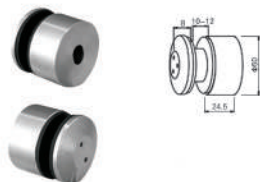
LS-250



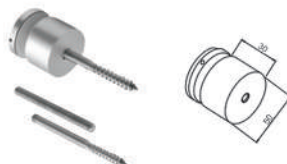
LS-251



LS-252



LS-253



LS-254

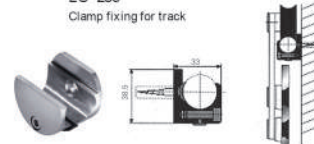


B \ L	15	20	25	30	40	50	60	70	80	100	120	150-140
12	15	20	25	30	40	50	60	70	80	100	120	150-140
16	15	20	25	30	40	50	60	70	80	100	120	150-140
19	15	20	25	30	40	50	60	70	80	100	120	150-140
25	15	20	25	30	40	50	60	70	80	100	120	150-140
30	15	20	25	30	40	50	60	70	80	100	120	150-140
40	15	20	25	30	40	50	60	70	80	100	120	150-140
50	15	20	25	30	40	50	60	70	80	100	120	150-140

Advertising screws series

LS-255

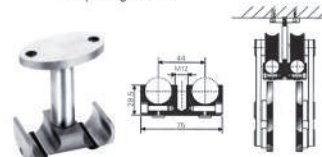
Clamp fixing for track



The connction with wall

LS-257

Clamp fixing for track



The connction with ceiling

LS-259

Clamp fixing for track



The connction with glass

LS-261

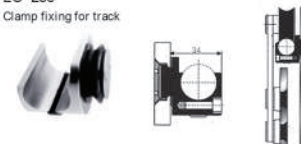
Clamp fixing for track



The connction with glass

LS-256

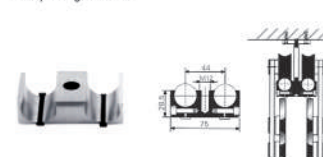
Clamp fixing for track



The connction with glass

LS-258

Clamp fixing for track



Clamp of double seet fixing for track

LS-260

Clamp fixing for track



The connction with wall

LS-262

Clamp fixing for track


Material: Stainless Steel  
Finish: Polished Stainless Steel (PSS)  
Satin Stainless Steel (SSS)

Material: Stainless Steel  
Finish: Polished Stainless Steel (PSS)  
Satin Stainless Steel (SSS)

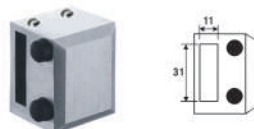
LS-263



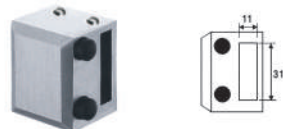
LS-264



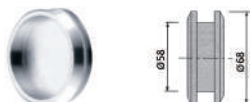
LS-265



LS-266



LS-271



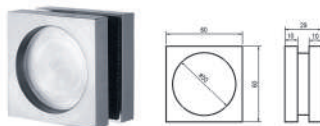
LS-272



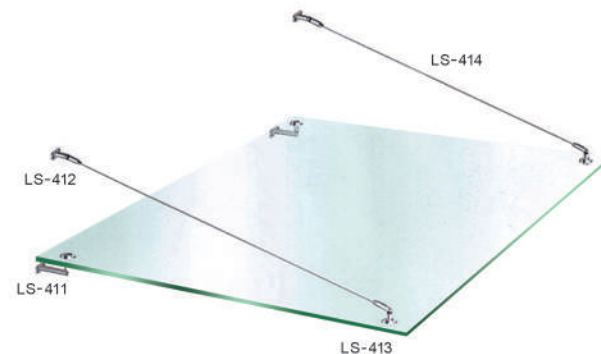
LS-273



LS-277



Material: Stainless Steel  
Finish: Polished Stainless Steel (PSS)  
Satin Stainless Steel (SSS)



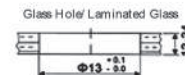
LS-411  
Wall to glass connector STD (cable connection)



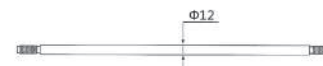
LS-412  
Front cantilever glass bracket STD (cable connection)



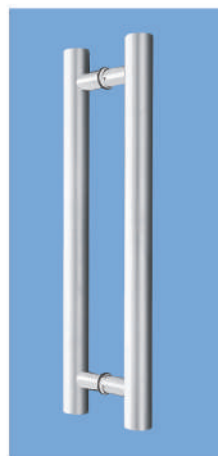
LS-413  
Rear cantilever wall bracket STD (cable connection)



LS-414

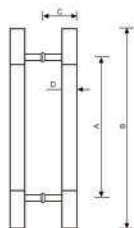


Material: Stainless Steel  
Finish: Polished Stainless Steel (PSS)  
Satin Stainless Steel (SSS)



L- 1102

Material:Stainless steel



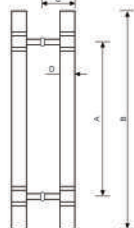
FORMAT	SIZE (mm)			
	A	B	C	D
25x400	305	400	60	Ø25
32x500	350	500	74	Ø32
32x600	435	600	74	Ø32
32x700	480	700	74	Ø32
32x900	560	900	74	Ø32
32x1200	780	1200	74	Ø32
38x600	435	600	80	Ø38
38x900	560	900	80	Ø38
38x1200	780	1200	80	Ø38

FINISH P35 S35 P35 S35 Ti



L- 1105

Material:Stainless steel



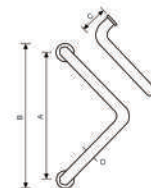
FORMAT	SIZE (mm)			
	A	B	C	D
25x400	305	400	60	Ø25
32x500	350	500	74	Ø32
38x600	425	600	80	Ø38

FINISH P35 S35 P35 S35 Ti



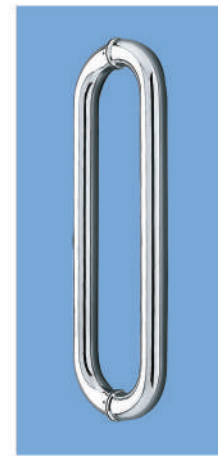
L- 1112

Material:Stainless steel



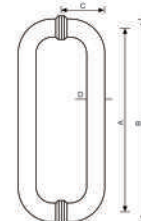
FORMAT	SIZE (mm)			
	A	B	C	D
25x200	250	200	72	Ø25
25x305	305	305	72	Ø25
25x305	305	337	80	Ø32
25x305	305	337	80	Ø32
32x305	305	337	80	Ø32
32x305	305	337	80	Ø32
32x350	350	382	80	Ø32

FINISH P35 S35



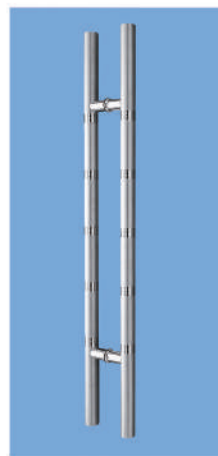
L- 1113

Material:Stainless steel



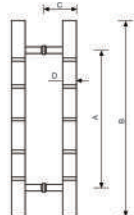
FORMAT	SIZE (mm)			
	A	B	C	D
32x305	305	330	72	Ø32
32x305	305	337	72	Ø32
32x305	305	337	80	Ø32
32x305	305	382	80	Ø32
32x450	450	482	80	Ø32
32x600	600	632	80	Ø32
38x500	500	560	87	Ø38

FINISH P35 P35 S35 S35 Ti



L- 1106

Material:Stainless steel



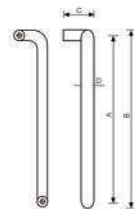
FORMAT	SIZE (mm)			
	A	B	C	D
25x400	305	400	60	Ø25
32x500	350	500	74	Ø32
32x900	560	900	74	Ø32
38x900	560	900	80	Ø38
38x1200	780	1200	80	Ø38

FINISH P35 S35



L- 1111

Material:Stainless steel



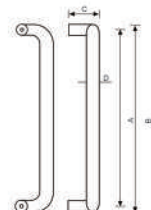
FORMAT	SIZE (mm)			
	A	B	C	D
38x700	662	700	93	Ø38
38x1300	1162	1300	93	Ø38

FINISH P35 P35 S35



L- 1114

Material:Stainless steel



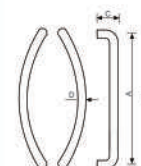
FORMAT	SIZE (mm)			
	A	B	C	D
25x200	250	200	72	Ø25
25x305	305	330	72	Ø25
25x305	305	337	72	Ø25
25x450	450	482	72	Ø25
32x305	305	337	80	Ø32
32x350	350	382	80	Ø32
32x450	450	482	80	Ø32

FINISH P35 S35 P35 S35 Ti



L- 1120

Material:Stainless steel



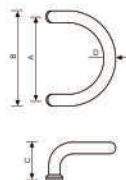
FORMAT	SIZE (mm)			
	A	B	C	D
32x430	398	430	80	Ø32

FINISH P35 P35 S35



L- 1125

Material:Stainless steel

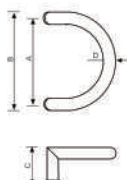


FORMAT	SIZE (mm)			
	A	B	C	D
25x200	200	225	72	625
25x250	250	275	72	625
25x305	305	330	72	625
32x250	250	282	80	632
32x305	305	337	80	632
32x350	350	382	80	632
FINISH	PSS SSS TI PSS SSS			

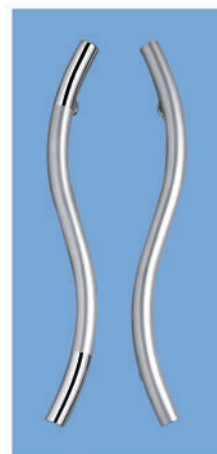


L- 1126

Material:Stainless steel

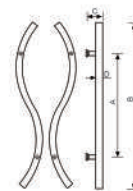


FORMAT	SIZE (mm)			
	A	B	C	D
25x200	200	225	72	625
25x305	305	330	72	625
32x250	250	282	80	632
32x350	350	382	80	632
FINISH	PSS SSS TI			

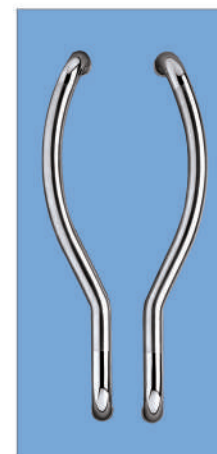


L- 1148

Material:Stainless steel

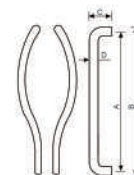


FORMAT	SIZE (mm)			
	A	B	C	D
32x600	425	600	74	632
FINISH	PSS SSS PSS/SSS TI			



L- 1149

Material:Stainless steel

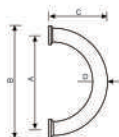


FORMAT	SIZE (mm)			
	A	B	C	D
32x600	568	600	80	632
FINISH	PSS PSS/SSS TI			



L- 1127

Material:Stainless steel

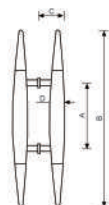


FORMAT	SIZE (mm)			
	A	B	C	D
25x200	200	225	117	625
32x305	305	337	186	632
FINISH	PSS SSS TI			



L- 1131

Material:Stainless steel

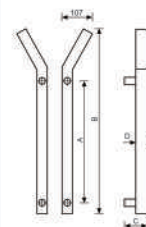


FORMAT	SIZE (mm)			
	A	B	C	D
32x500	235	500	74	632
32x600	235	600	80	632
FINISH	PSS SSS PSS/SSS TI			

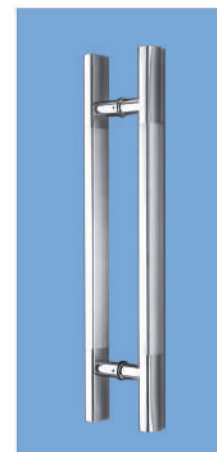


L- 1166

Material:Stainless steel

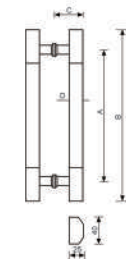


FORMAT	SIZE (mm)			
	A	B	C	D
32x600	305	600	74	632
FINISH	PSS SSS			

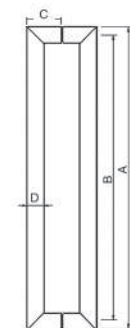
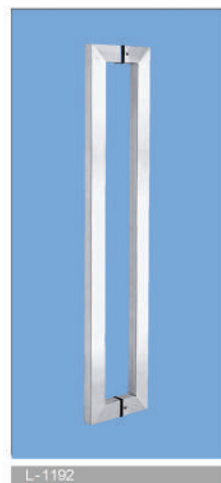


L- 1168

Material:Stainless steel

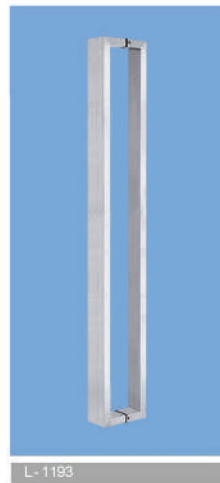


FORMAT	SIZE (mm)			
	A	B	C	D
40x25x600	425	600	80	40x25
40x25x1200	760	1200	80	40x25
40x25x1500	1200	1500	80	40x25
FINISH	PSS PSS/SSS			



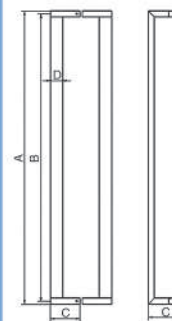
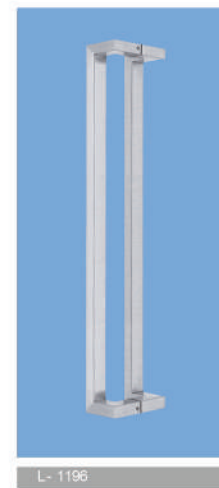
FORMAT	SIZE(mm)			
	A	B	C	D
1530/600	600	575	72	1530
2530/600	600	562	72	2530
2530/800	800	788	72	2530
2530/900	800	760	82	2530
2530/1000	1000	990	82	2530
FINISH	PSS, SSS			

Material:Stainless steel



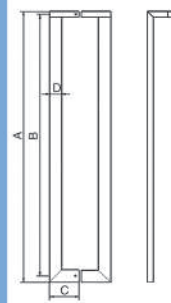
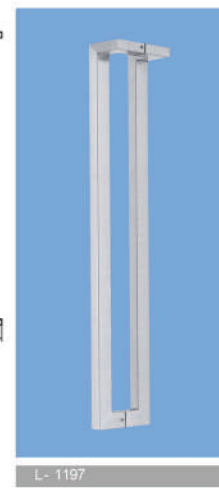
FORMAT	SIZE(mm)			
	A	B	C	D
1530/600	600	565	72	1530
2530/600	600	575	72	2530
2530/800	800	775	72	2530
2530/900	800	760	82	2530
2530/1000	1000	985	82	2530
2530/1000	1000	975	82	2530
FINISH	PSS, SSS			

Material:Stainless steel



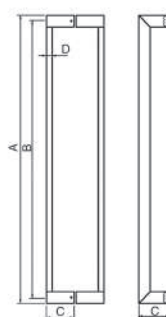
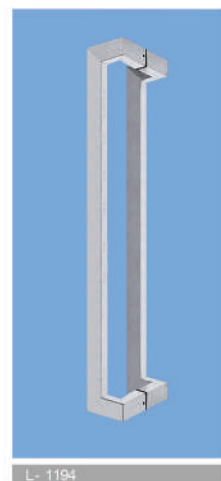
FORMAT	SIZE(mm)			
	A	B	C	D
1530/600	600	565	72	1530
2530/600	600	575	72	2530
2530/800	800	775	72	2530
2530/900	800	760	82	2530
2530/1000	1000	985	82	2530
2530/1000	1000	975	82	2530
FINISH	PSS, SSS			

Material:Stainless steel



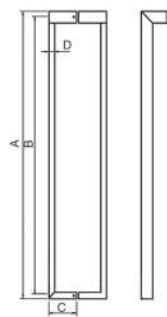
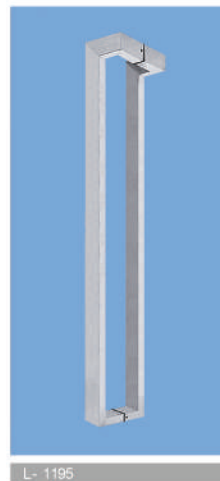
FORMAT	SIZE(mm)			
	A	B	C	D
1530/600	600	565	72	1530
2530/600	600	568	72	2530
2530/800	800	768	72	2530
2530/900	800	770	82	2530
2530/1000	1000	970	82	2530
2530/1000	1000	960	82	2530
FINISH	PSS, SSS			

Material:Stainless steel



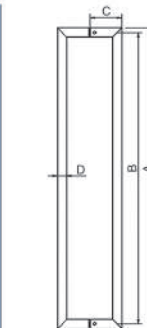
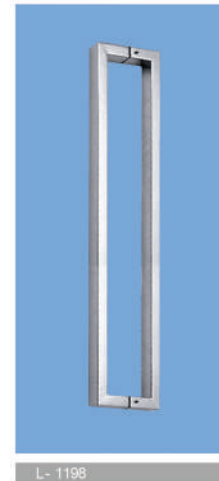
FORMAT	SIZE(mm)			
	A	B	C	D
1530/600	600	575	72	1530
2530/600	600	565	72	2530
2530/800	800	765	72	2530
2530/900	800	760	82	2530
2530/1000	1000	960	82	2530
2530/1000	1000	950	82	2530
FINISH	PSS, SSS			

Material:Stainless steel



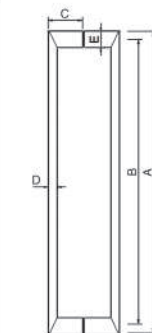
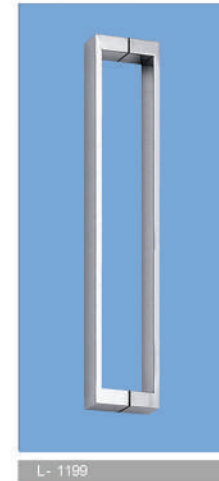
FORMAT	SIZE(mm)			
	A	B	C	D
1530/600	600	575	72	1530
2530/600	600	565	72	2530
2530/800	800	765	72	2530
2530/900	800	770	82	2530
2530/1000	1000	970	82	2530
2530/1000	1000	960	82	2530
FINISH	PSS, SSS			

Material:Stainless steel



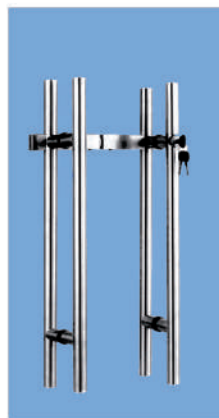
FORMAT	SIZE(mm)			
	A	B	C	D
1530/600	600	565	80	1530
1530/750	750	480	80	1530
1530/900	900	580	80	1530
2530/600	600	575	72	2530
2530/800	800	475	72	2530
2530/900	900	575	72	2530
FINISH	PSS, SSS			

Material:Stainless steel



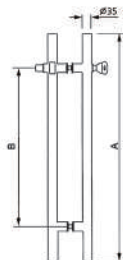
FORMAT	SIZE(mm)				
	A	B	C	D	E
1530/400	400	375	80	1530	2530
1530/500	500	475	80	1530	2530
1530/600	600	575	80	1530	2530
FINISH	PSS, SSS				

Material:Stainless steel



L - 1227

Material: Stainless steel  
Finish: Polished Stainless Steel (PSS)  
Satin Stainless Steel (SSS)



Model	A	B
L-1227	600	400
L-1227-1	800	500
L-1227-2	1000	600



L - 1228

Material: Stainless steel  
Finish: Polished Stainless Steel (PSS)  
Satin Stainless Steel (SSS)



Model	A	B
L-1228	600	400
L-1228-1	800	500
L-1228-2	1000	600

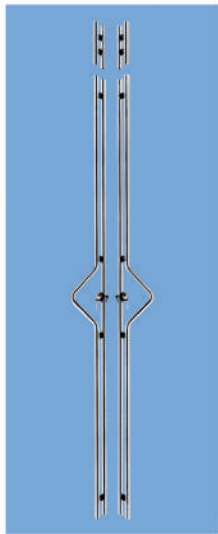


L - 1229

Material: Stainless steel  
Finish: Polished Stainless Steel (PSS)  
Satin Stainless Steel (SSS)

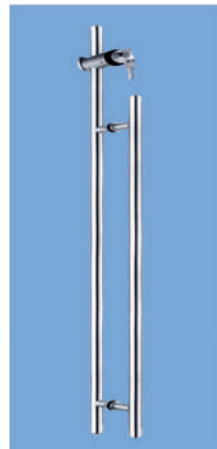
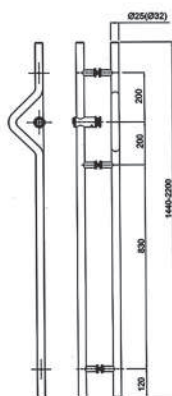


Model	A	B
L-1229	2000	725
L-1229-1	2100	825
L-1229-2	2500	1225
L-1229-3	2800	1525

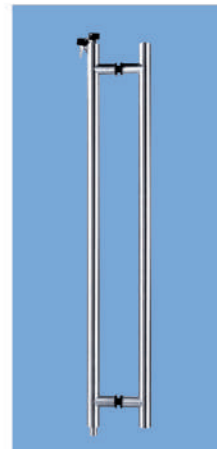
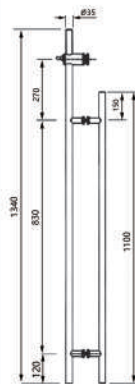


L - 1230

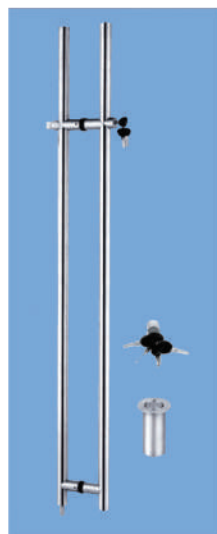
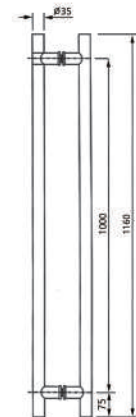
Material: Stainless steel  
Finish: Polished Stainless Steel (PSS)  
Satin Stainless Steel (SSS)



L - 1231

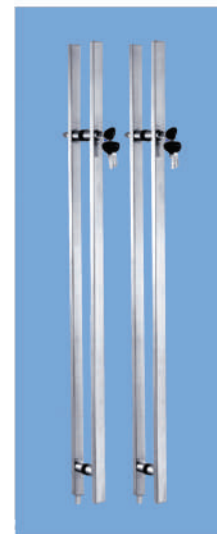
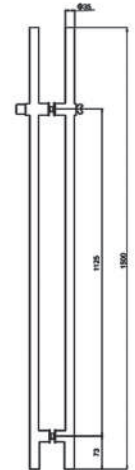


L - 1232



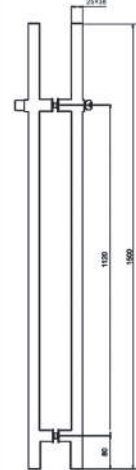
L - 1233

Material: Stainless steel  
Finish: Polished Stainless Steel (PSS)  
Satin Stainless Steel (SSS)



L - 1234

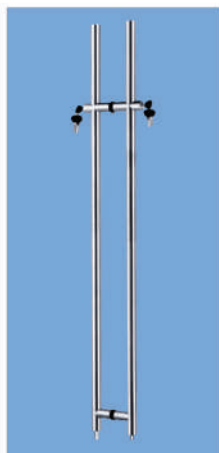
Material: Stainless steel  
Finish: Polished Stainless Steel (PSS)  
Satin Stainless Steel (SSS)





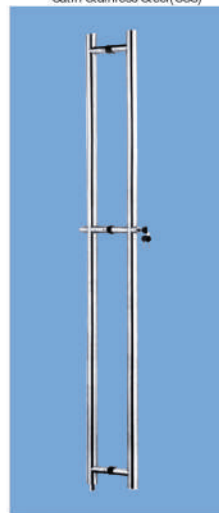
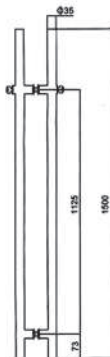
L-1235

Material: Stainless steel  
Finish: Polished Stainless Steel (PSS)  
Satin Stainless Steel (SSS)



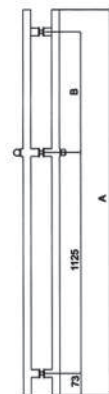
L-1236

Material: Stainless steel  
Finish: Polished Stainless Steel (PSS)  
Satin Stainless Steel (SSS)

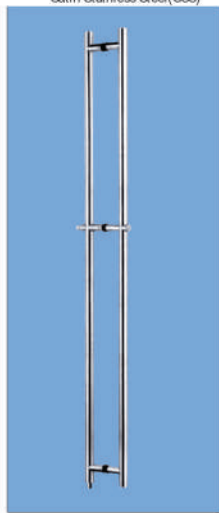


L-1237

Material: Stainless steel  
Finish: Polished Stainless Steel (PSS)  
Satin Stainless Steel (SSS)

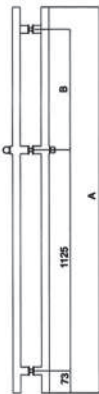


Model	A	B
L-1237	2000	725
L-1237-1	2100	825
L-1237-2	2500	1225



L-1238

Material: Stainless steel  
Finish: Polished Stainless Steel (PSS)  
Satin Stainless Steel (SSS)

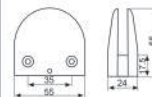


Model	A	B
L-1238	2000	725
L-1238-1	2100	825
L-1238-2	2500	1225



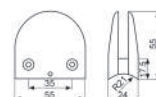
L-3101

MATERIAL: Stainless Steel  
FINISH: Polished Stainless (PSS)  
Satin Stainless Steel (SSS)



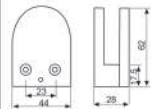
L-3102

MATERIAL: Stainless Steel  
FINISH: Polished Stainless (PSS)  
Satin Stainless Steel (SSS)



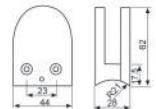
L-3103

MATERIAL: Stainless Steel  
FINISH: Polished Stainless (PSS)  
Satin Stainless Steel (SSS)



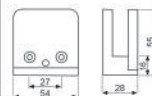
L-3104

MATERIAL: Stainless Steel  
FINISH: Polished Stainless (PSS)  
Satin Stainless Steel (SSS)



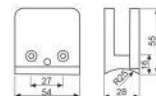
L-3105

MATERIAL: Stainless Steel  
FINISH: Polished Stainless (PSS)  
Satin Stainless Steel (SSS)



L-3106

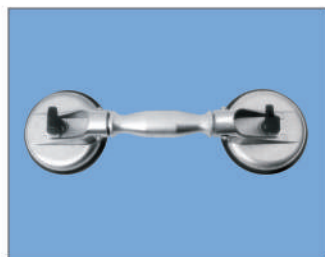
MATERIAL: Stainless Steel  
FINISH: Polished Stainless (PSS)  
Satin Stainless Steel (SSS)





L- 3210

Single- Cup Lifter  
Lifting Capacity 25kgs



L- 3211

Swivel Double- Cup Lifter  
Lifting Capacity 60kgs



L- 3212

Double- Cup Lifter  
Lifting Capacity 80kgs



L- 3213

Triple- Cup Lifter  
Lifting Capacity 130kgs

Glass Door Hardware & Glass Accessories

## MATERIAL

Stainless Steel Brass Aluminium Zinc Alloy

## FINISHES:

